



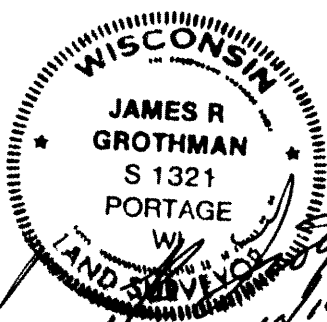
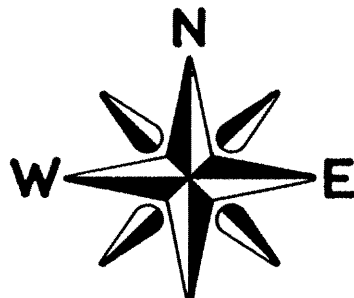
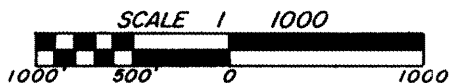
Stock No 26273

41103

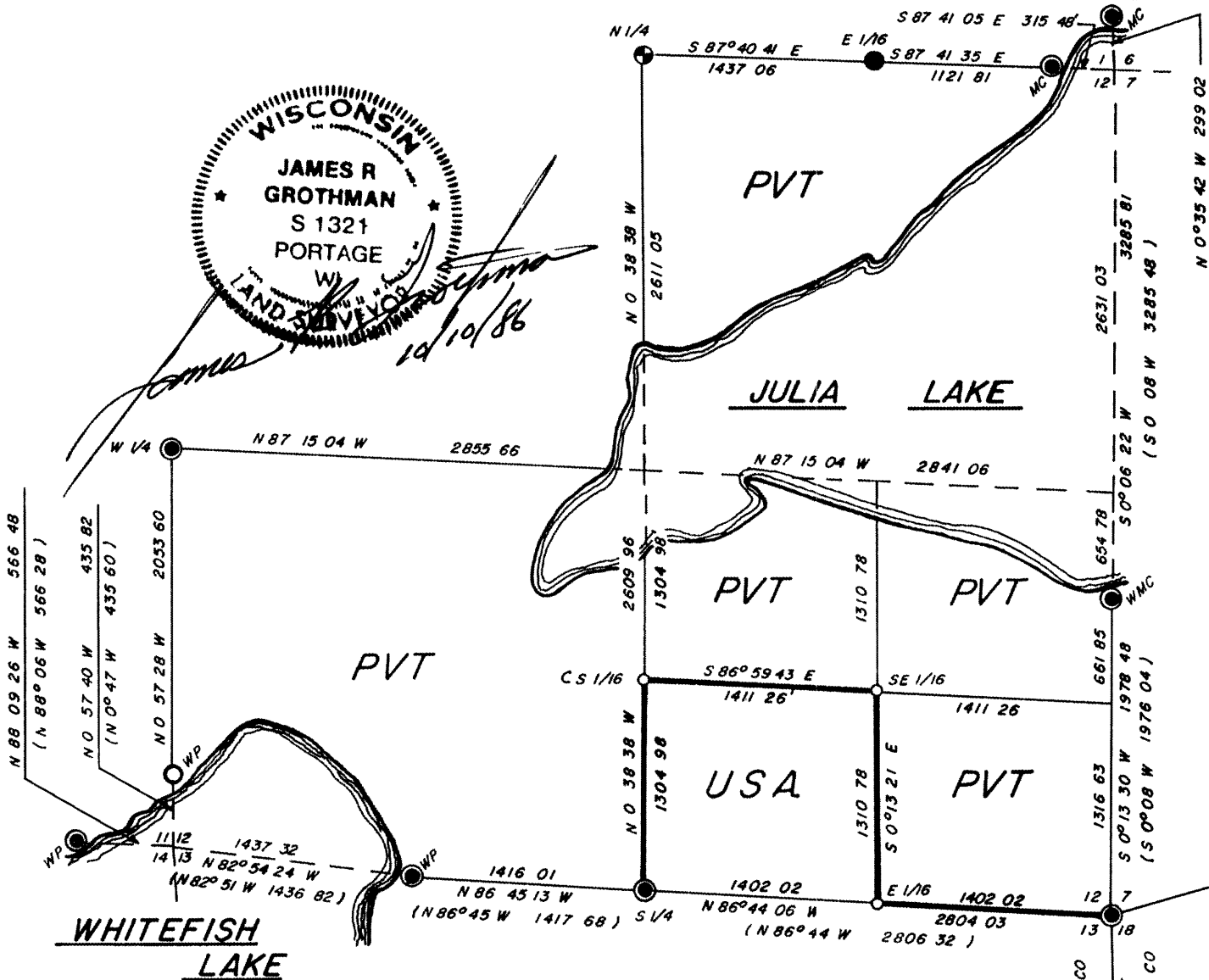
# PLAT OF SURVEY US GOVERNMENT LAND

Sheet 1 of 6

BEING THE SW 1/4 OF THE SE 1/4, SECTION 12, TOWNSHIP 38 NORTH,  
RANGE 11 EAST, FOURTH PRINCIPAL MERIDIAN, ONEIDA COUNTY,  
WISCONSIN



*10/10/86*



### LEGEND

- FOUND 6 DIA G L O CONCRETE MONUMENT w/BRASS CAP & EMBEDDED IRON ROD
- FOUND 2 DIA. ALUMINUM MONUMENT w/ALUMINUM CAP
- SET 1 DIA X 36 LONG BERNTSEN ALUMINUM PIPE MONUMENT w/ALUM CAP
- 2 DIA ALUMINUM MONUMENT SET BY U S FOREST SERVICE
- U S GOVERNMENT LAND BOUNDARY LINE MARKED AND POSTED TO USFS STANDARDS
- ( ) PUBLISHED G L O DEPENDENT RESURVEY INFORMATION
- ⊕ FOUND 2 DIA G L O IRON PIPE w/BRASS CAP

RECEIVED & FILED #

On d  
July 5  
1980

ONEIDA CO  
REG. CLERK

DATE

41103



Stock No 26273

Sheet 2 of 6

T 3<sup>d</sup> N R 11 E, SECTION 12SURVEY NOTES

This survey is made by CENTRAL TRACT LIND COMPANY INC pursuant to United States Department of Agriculture, Forest Service Contract No 53-56A6-6-00020, Cadastral Survey" for the purpose of recovering, restoring, establishing, marking and perpetuating the corners and boundary lines of the U S Government land on the perimeter and within Section 12, T3<sup>d</sup> N R 11 E, Fourth Principal Meridian, Oneida County, Wisconsin as shown on the plat herewith

The original government survey of the township was made in 1859, by William F Draehery

The U S Government acquired title to the lands in Section 12 in 1921

This township was resurveyed by the General Land Office in 1941

Bearings between corner positions are true bearings by reference to a solar observation. All distances shown thereon are in feet and hundredths of feet. The control traverse was measured by use of electronic distance measuring equipment to an accuracy of one part in 20 000. Corners recovered, restored and established by this survey are marked by the monument described in the map legend. Each monumented corner position is referenced to blazed and described bearing trees and described reference object.

CORNERS RECOVERED1 Corner to Sections 12&13, T3<sup>d</sup> N R11E and Sections 7&18, T3<sup>d</sup> N R12E

Corner is monumented by a C I O brass cap

Corner Reference:

Sugar Maple	10'	N112°	22 23 feet
Ped Pine	9"	S35°E	22 16 feet
Ped Pine	9"	S61°W	19 41 feet
Sugar Maple	12"	N119°W	42 26 feet
Steel Sign Post		South	1 00 foot

2 Quarter Corner to Sections 12 & 13

Corner is monumented by a C I O brass cap

Corner Reference:

Red Pine	18"	S40°E	21 30 feet
Birch	16"	S27°E	57 10 feet
Ped Maple	12"	N68°W	21 12 feet
Ped Pine	5"	S32°W	41 00 feet
Steel Sign Post		South	1 00 foot

11103

11103



Stock No 26273

Sheet 3 of 6

T 38 N R 11 W, SECTION 12

3 Quarter Corner to Sections 11, 12

Corner is monumented by a C I O brass cap

Corner References

White Pine	20"	North	7 60 feet
Hemlock	16"	54 <sup>0</sup> "	27 02 feet
Pod Pine	5"	34 <sup>0</sup> "	40 25 feet
Balsam	9"	12 <sup>0</sup> "	3 <sup>0</sup> 12 feet
Steel Sign Post		North	1 50 foot

4 Meander Corner Between Sections 11, 14, on West Side of Whitefish Lake

Corner is monumented by a C I O brass cap

Corner References

Maple	17"	111 <sup>0</sup> "	10 67 feet
Oak	23"	1149 <sup>0</sup> "	23 44 feet
Oak	16"	372 <sup>0</sup> "	20 58 feet
W. Corner of Cottage		1187 <sup>0</sup> "	41 39 feet
Steel Sign Post		East	1 00 foot

5 Meander Corner Between Sections 12, 13, on the East Side of Whitefish Lake

Corner is monumented by a C I O brass cap

Corner References

Norway Pine	17"	1143 <sup>0</sup> "	2 07 feet
Norway Pine	17"	880 <sup>0</sup> "	14 14 feet
Norway Pine	12"	81 <sup>0</sup> "	10 22 feet
Norway Pine	15"	835 <sup>0</sup> "	26 17 feet

6 Witness Corner to the Meander Corner Between Section 12, [38], [11] and Section 7, T38N, R12W

Corner is monumented by a C I O Brass Cap

Corner References

Hemlock	15"	116 <sup>0</sup> "	20 70 feet
White Pine	14"	54 <sup>0</sup> "	28 94 feet
White Pine	29"	57 <sup>0</sup> "	16 70 feet
W. Corner Conc. Foundation		58 <sup>0</sup> "	23 73 feet

L1103



Stock No 26273

Sheet 4 of 6

T 3° 1' 11", SECTION 12

7 Meander Corner Between Sections 11 & 12, on the South Side of Whitefish Lake

Corner is monumented by a 1" x 60" aluminum pipe with a 2" aluminum tablet stamped to identify corner previously restored and documented on September 23, 1936 by Willard B. Cochran.

## Corner References

Henlock	3"	N77°0'30"E	16.17 feet
Henlock	13"	S34°0'45"W	58.00 feet

9 Quartz Corner to Sections 1 and 12

Corner is monumented by a 2" diameter iron pipe with a C.L.O. brass cap previously restored and documented on October 22, 1934 by John H. Fisher.

## Corner References

White Pine	9'	90°0'	12.10 feet
Palm	8"	120°0'	12.00 feet
White Pine	14"	S33°0'	20.00 feet
White Spruce	8"	S36°0'	24.50 feet
Steel Sign Post		East	1.40 feet

9 Meander Corner between Sections 1 and 12 on the West Side of Julia Lake

Corner is monumented by a C.L.O. brass cap previously restored and documented on October 22, 1934 by John H. Fisher.

## Corner References

White Pine	7"	N38°0'0"	12.30 feet
Red Pine	5"	N10°0'0"	7.10 feet
White Pine	10"	S29°0'0"	11.90 feet
Steel Sign Post		S66°0'0"	1.00 feet

10 Meander Corner between Section 1, T38N, R11E, and Section 6, T38N, R12E

Corner is monumented by a C.L.O. brass cap previously restored and documented on October 22, 1934 by John H. Fisher.

## Corner References

White Pine	6'	N14°0'0"	6.30 feet
Red Pine	6'	N12°0'0"	25.60 feet
White Pine	4'	N26°0'0"	17.40 feet
Steel Sign Post		South	0.70 feet

Stock No 26273

T 38 N R 11 E SECTION 12

Sheet 5 of 6

CORNER ESTABLISHED1 East 1/16 to Section 12-13

Corner is monumented by a 1" x 3/4" aluminum pipe with a 3" aluminum tablet stamped to identify corner. The corner is set at the midpoint and on line between the Corner to Sections 12 & 13, T38NR11E 7 18, 138NR12E and the Quarter Corner to Sections 12 and 13.

## Corner References

Red Pine	12"	S49°0'	16 02 feet
Red Pine	14"	S16°0'	40 11 feet
Red Pine	12"	N99°0'	27 79 feet
Steel Sign Post		Northeasterly	2 00 feet

2 Southeast 1/16 Corner, Section 12

Corner is monumented by a 1" x 3/4" aluminum pipe with a 3" aluminum tablet stamped to identify corner. The corner is set at the intersection of the North-South 1/16 line and the East-West 1/16 line Southeast Quarter, Section 12.

## Corner References

White Birch	14"	S88°0'	13 39 feet
Flm	6"	S32°0'	29 11 feet
Maple	10"	S63°0'	23 20 feet
Steel Sign Post		Southwest	1 00 feet

3 Center-South 1/16 Corner to Section 12

Corner is monumented by a 1" x 3/4" aluminum pipe with a 3" aluminum tablet stamped to identify corner. The corner is on line and at the midpoint between the Center 1/4 Corner Section 12 and the Quarter Corner to Sections 12-13.

## Corner References

White Pine	6"	S67°0'	21 39 feet
White Birch	8"	S17°0'	26 00 feet
White Birch	12"	S89°0'	5 45 feet
Steel Sign Post		Southeast	1 00 feet



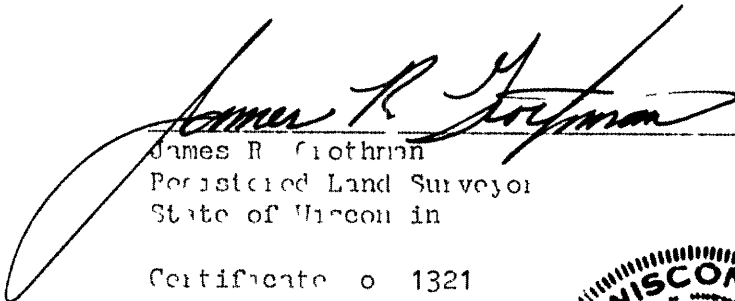
Stock No 26273

T 38 N R 11 E, SECTION 12

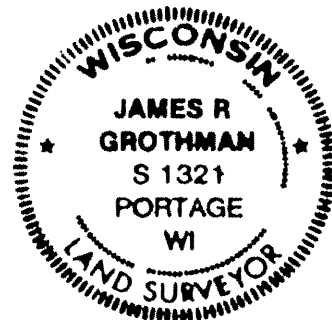
SURVEYOR'S AFFIDAVIT


State of Wisconsin)  
County of Columbia)

I, James R. Grothman, Land Surveyor, Registered in the State of Wisconsin hereby, certify that I have surveyed and subdivided section 12, T38N, R11E Fourth Principal Meridian, County of Oneida, State of Wisconsin, in accordance with the rules of the survey of public land and with the statutes of the State of Wisconsin. The plat map and survey notes are an accurate representation of the corners recovered and established.

  
James R. Grothman  
Registered Land Surveyor  
State of Wisconsin  
Certificate No. 1321

Date of Survey June-September 1986



Plat ready for filing  District Ranger 1/6/87 Date