



Stock No 26273

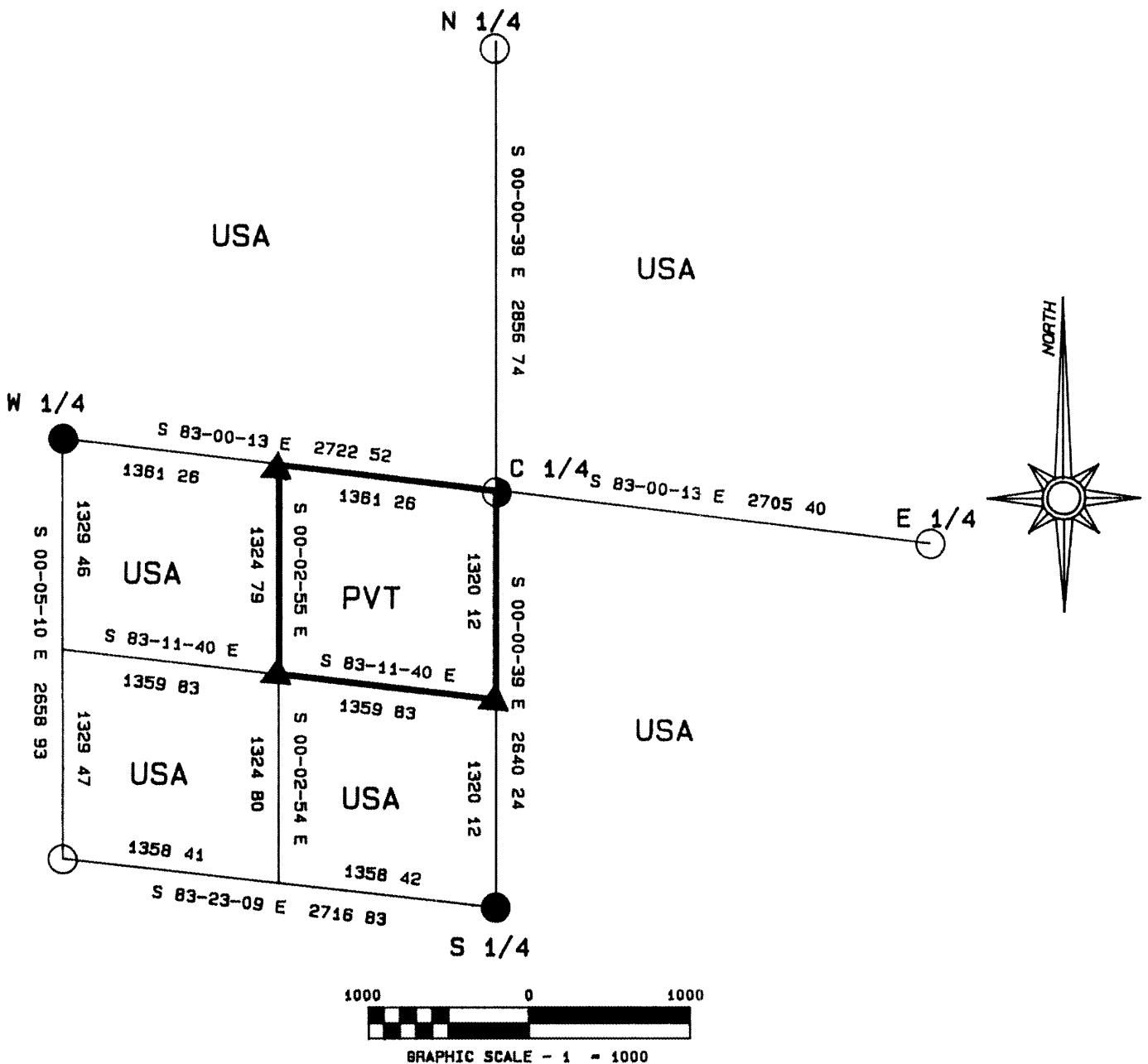
L1106

# PLAT OF SURVEY FOR CERTIFIED LAND CORNER RESTORATION AND ESTABLISHMENT

BEING THE CORNERS FOR THE NE 1/4 OF THE SW 1/4 AND THE  
CORNERS ON THE PERIMETER OF THE SECTION

## SECTION 24 TOWNSHIP 38 NORTH RANGE 11 EAST

COUNTY OF ONEIDA STATE OF WISCONSIN



### LEGEND

- ▲ 1 INCH DIAMETER ALUMINUM PIPE MONUMENT 60 INCHES LONG WITH AN ALUMINUM CAP
  - 2 1/2 INCH DIAMETER GALVANIZED PIPE MONUMENT FROM DEPENDENT RESURVEY
  - CONCRETE MONUMENT WITH BRASS CAP FROM DEPENDENT RESURVEY
  - ◐ 2 1/2 INCH DIAMETER GALVANIZED PIPE MONUMENT WITH BRASS CAP
- BOUNDARY LINE MARKED TO FOREST SERVICE STANDARD

REC'D IN FIELD # L1106  
 JUL 13 1993  
 S O CR  
 P J  
 OCS #

L1106

L1106



Stock No 26273

T38N R11E, SECTION 24

page 2 of 4

SURVEY NOTES

This survey was made by the U S Department of Agriculture, Forest Service for the purpose of recovering, restoring, establishing, marking, and perpetuating the corners and boundary lines of U S Government land on the perimeter and within Section 24, Township 38 North, Range 11 East Fourth Principal Meridian, Oneida County, State of Wisconsin as shown on the Plat map herewith

The U S Government land within Section 24 was acquired in 1936, 39, 40, 43 and 1950

The original government subdivision of this township was made in 1859, and resurveyed by G L O in 1941

The bearings between corner positions are true bearings as determined by reference to solar observations The accuracy of this survey exceeds the State requirement for closure of 1 in 3,000 Corners recovered or established by this survey are marked as described in the map legend Each monumented corner is referenced to blazed, scribed painted and tagged bearing trees Tie bearings are magnetic, and not corrected for declination

The field notes and a copy of the Plat of survey are on file in the Forest Service Supervisor's Office at Rhinelander, Wisconsin

CORNERS RECOVERED AND RESTORED1 East Quarter Corner

Corner recovered as restored by G L O in 1941 and Jean Resvick in 1967

Corner references recovered

Cedar	14"	N69°E	34 20 feet
Cedar	13"	S50°W	28 00 feet

New Corner reference

Steel sign post		North	5 00 feet
-----------------	--	-------	-----------

2 South Quarter Corner

Corner recovered as restored by G L O in 1941 and Jean Resvick in 1962

Corner references recovered

W Birch	14"	N89°E	35 80 feet
W Birch	14"	N45°W	62 85 feet

New Corner references

Spruce	13"	N07°W	53 82 feet
Wood sign post		Southeast	1 00 feet

3 Southwest Section Corner

Corner recovered as restored by G L O in 1941 and Jean Resvick in 1967

Corner references recovered

Spruce	16"	N81°E	30 5 feet
Spruce	10"	S52 E	14 70 feet
Spruce	13"	S25°W	13 92 feet
Wood sign post		Northeast	1 80 feet

4 West Quarter Corner

Corner recovered as restored by G L O in 1941 and Jean Resvick in 1967

Corner references recovered

all 1967 references gone

New Corner references

Balsam	7"	N10 E	144 76 feet
Aspen	4"	S45 W	2 18 feet
Wood sign post		West	1 50 feet

11102



Stock No 26273

## T38N R11E SECTION 24

page 3 of 4

5 North Quarter and Meander Corner to Sections 13 and 24 on the West side of Elm Lake

Corner recovered as restored by G L O in 1941 and Genral Engineering under Forest Service contract in 1986

Corner references recovered

Balsam	7"	S17°W	43 62 feet
W Pine	10"	S43°W	147 58 feet
W Pine	31"	N75°W	254 56 feet
W Pine	14"	N71°W	111 70 feet
Steel sign post		Northeast	1 00 feet

CORNERS ESTABLISHED1 Center-Quarter Corner

Corner established at the intersection on straight lines between opposing Quarter Corner positions on the perimeter on the Section

Corner references

Cedar	8"	N77 E	22 05 feet
Cedar	12"	N38°W	47 35 feet
Steel sign post		East	0 75 feet

2 Center-South Sixteenth Corner

Corner established at midpoint and on line between the Center-Quarter Corner and the South Quarter Corners

Corner references

Spruce	7"	S79°E	13 78 feet
Spruce	8"	S29 W	11 78 feet
Steel sign post		East	1 00 feet

3 Southwest Sixteenth Corner

Corner established at the intersection of the straight lines between opposing Sixteenth Corners on the perimeter on the Southwest quarter of the Section

Corner references

Spruce	11"	S89 E	49 34 feet
Aspen	10"	N83 W	7 53 feet
Steel sign post		Southwest	0 50 feet

4 Center-West Sixteenth Corner

Corner established at midpoint and on line between the West Quarter Corner and the Center-Quarter Corner

Corner references

Cedar	12"	S25 E	22 24 feet
Cedar	14"	S18°W	17 61 feet
Steel sign post		Northwest	0 50 feet

901106



Stock No 26273

T38N R11E SECTION 24

page 4 of 4

SURVEYOR'S AFFIDAVIT

State of Wisconsin)  
County of Oneida )

I William B Cochrane, Land Surveyor, U S Forest Service and a registered Land Surveyor in the State of Wisconsin, hereby certify that I have surveyed and subdivided Section 24 Township 38 North, Range 11 East, Fourth Principal Meridian, State of Wisconsin

The plat map and survey notes herewith are a correct representation of the land surveyed and divided I have surveyed and subdivided said section in accordance with the rules for the survey of the public lands and with the statutes of the State of Wisconsin



*William B Cochrane*

Land Surveyor U S D A Forest Service  
R L S State of Wisconsin  
Certificate S-1107

Date of Survey 1989

Survey requested by

*Sam Bond*  
District Ranger

*3/1/90*  
Date