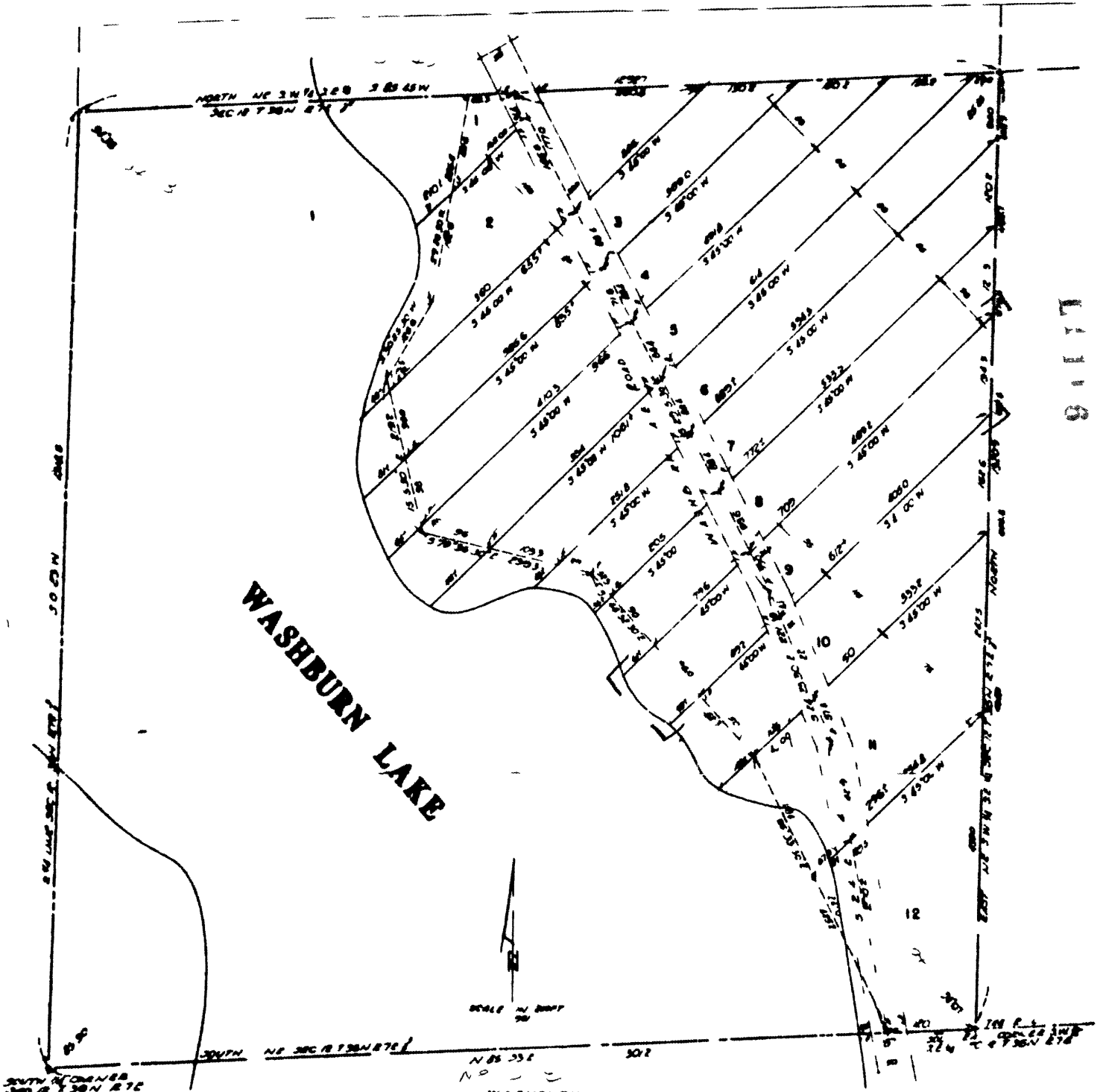


L1110



WASHBURN LAKE

WASHBURN LAKE TRACTS  
 SW 1/4 SE 1/4 SEC 12 T 36 N R 7 E  
 TOWN OF WOODBORO ONEIDA CO  
 WISCONSIN

01	B/	1001	1002



WASHBURN LAKE

WASHBURN LAKE TRACTS  
 S.W. 1/4 - S.E. 1/4, SEC 12, T 36 N., R 7 E.,  
 TOWN OF WOODBERG, ONEIDA CO  
 WISCONSIN

10972

REGISTRER'S OFFICE }  
 Oneida County, Wis. }  
 Received for Record the 18th day of  
May A. D. 1973 at  
4:20 o'clock P. M. and recorded in  
 Vol. 343 of Subs. on page 506  
Agnes Urzaga Register

469  
 300  
 Albert J. Cimble