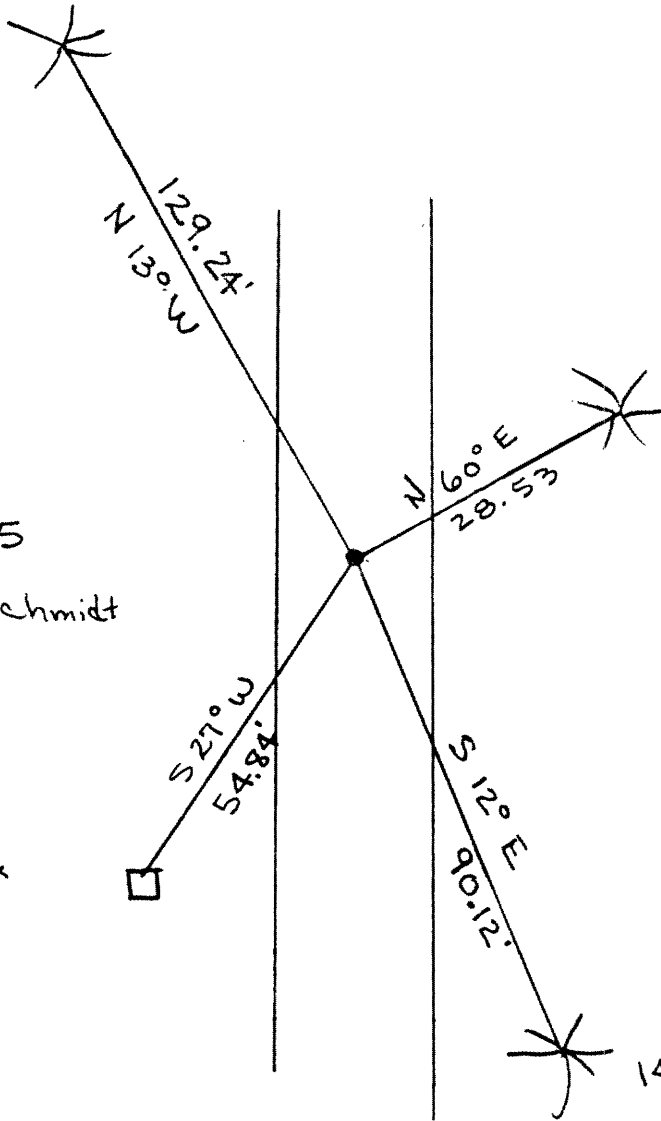


L1160

L1160

N.P.



9" J.P.

14" J.P.

E 1/4 13-36-5

INFO From L. Schmidt

TEL Box
E 9 32



L1160

L1160

RECEIVED & FILED #.....
 Oneida County Surveyor's Office
 Date **AUG. 27 1991**
 By *[Signature]*
 OCS Area #.....