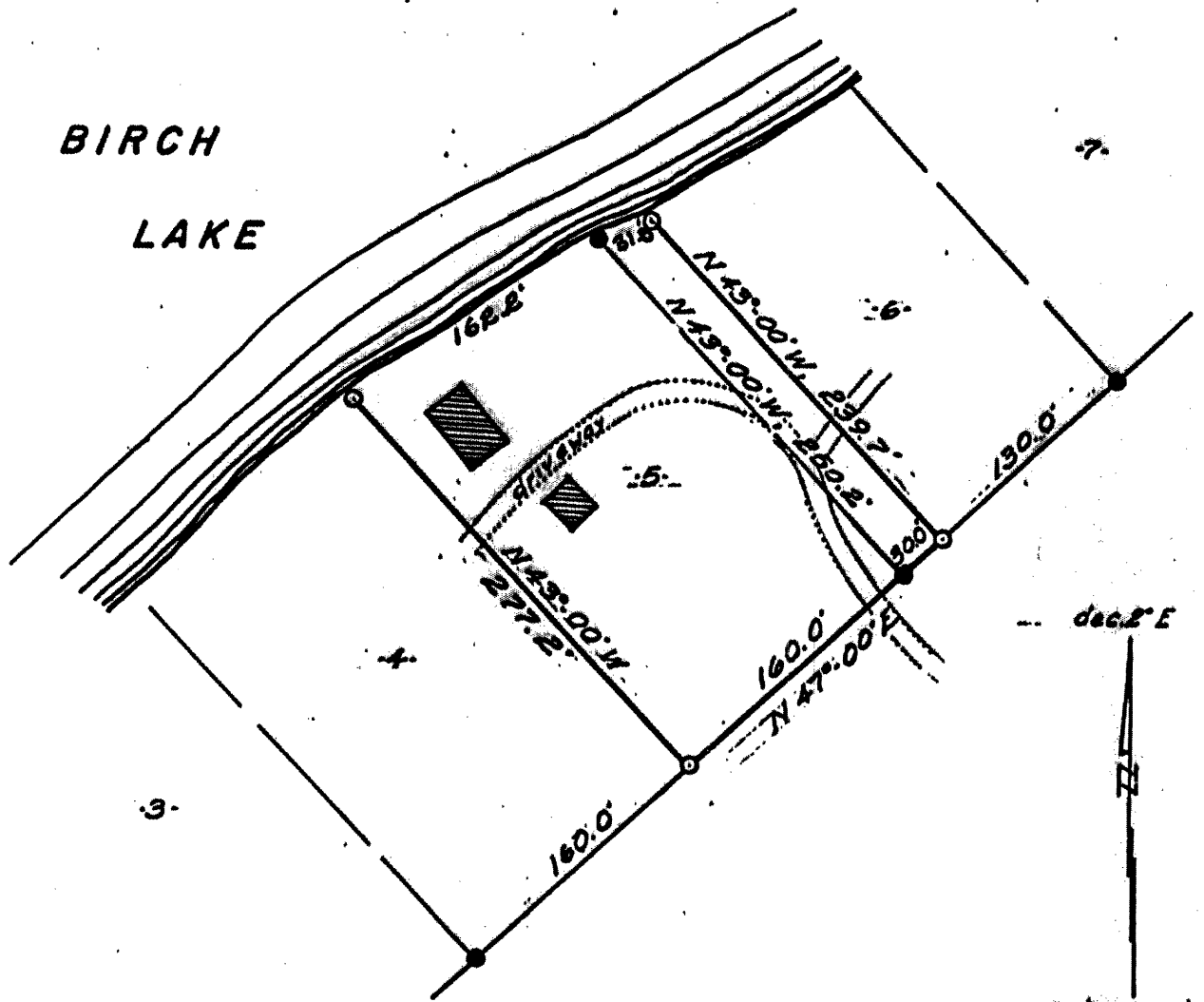


L1161

RECEIVED & FILED #
 Oneida County Surveyor's Office
 AUG 27 1968
 BY *[Signature]*
 OCS Area #

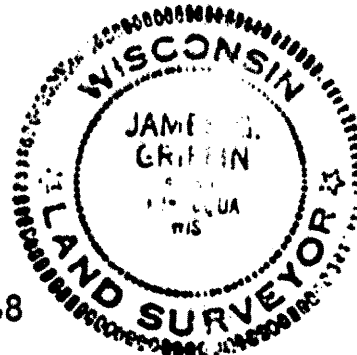
L1161



Part of
- CROSBY'S SUBDIVISION -

GOV'T. LOT 9
 SECTION 6, T 37N, R 7E
 Oneida County, Wis.

I certify that I have surveyed Lot 5 and the southerly 30 feet of Lot 6, Crosby's Subdivision as shown.



Scale 1" = 100'

July, 1966
 Revised: Feb. 5, 1968

Northwoods Surveyors

James J. Griffin
 Land Surveyor

L1161

L1161