

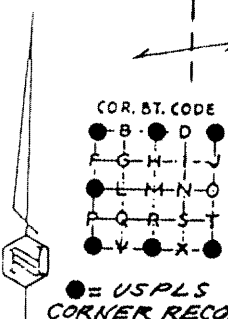
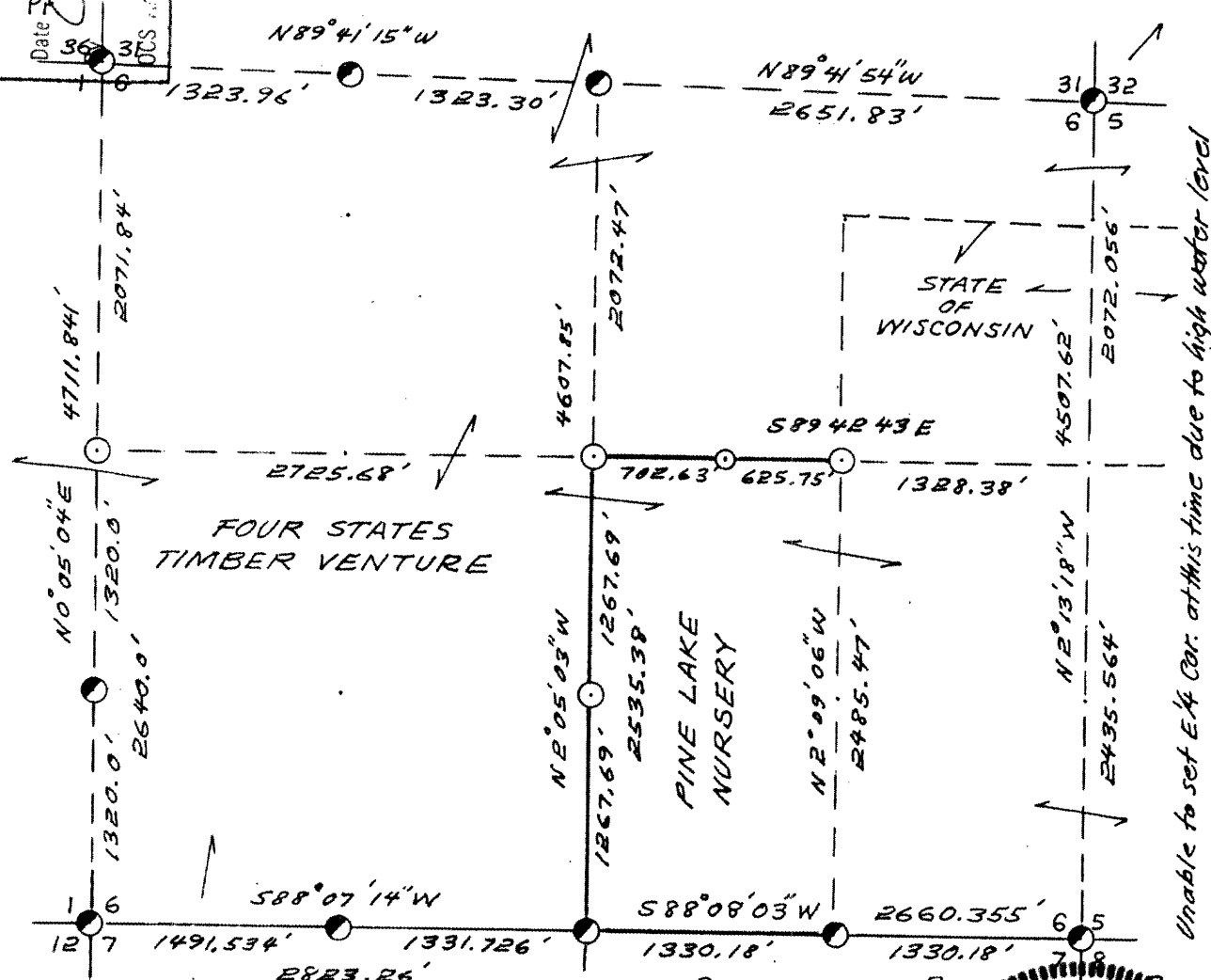
L1163

L1163

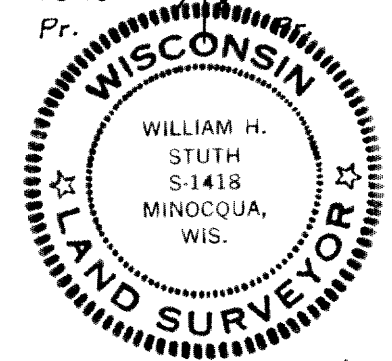
SEC. 6, T.38 N., R. 5 E., ONEIDA COUNTY, WIS.

L1163

RECEIVED & FILED #
 Oneida County Surveyor's Office
 Date SEP. 17 1991
 Date 56 31
 OCS # 303



B-W.Pine 13" N87°W 18.0'
 8" MPI. N8°E 11.7'
 M-9" R.Pine S35°E 12.8'
 8" " " N72°E 9.1'
 N-Top on 3" Tam. N82°E 16.5'
 R-23" R.Pine S13°E 81.5'
 5" W.Pine N71°W 5.8'
 X-4" Spr. S52°E 14.9'
 5" " S5°W 25.7'
 6" Spr. Stp. S1°30'W 62.6' (Halls
 bt with visible scribing)



SCALE:
 0 5 10 20 CHAINS
 0 330 660 1320 FEET

LEGEND: CORNERS & LINES

○ IRON PIPE OR CAP	▬ BLAZED - PAINTED
⊙ CONCRETE	▬ BLAZED
⊕ POST	▬ APPR. - PAINTED
△ STAKE	--- RANDOM
+ SPIKE	xxx FENCE
● BY OTHERS	

See Ray Halls 1933 Sec. 6 Notes (county records)

William H. Stuth

Packaging Corporation of America
 TOMAHAWK, WISCONSIN 54487

Ownership Boundary Survey

DRAWN BY *Wm. H. Stuth*

DATE 8/31/91

L1163