

Lot 16 & Lot 17 of the Unresurveyed
MAP OF PELICAN LAKE WILDS

ONEIDA COUNTY, NY

434 1/2
NE 200' NW 1/4 364
SECT 8
T26N R10E

L1169

RECEIVED & FILED #.....
 Oneida County Surveyor's Office
 Date: **NOV. 27 1991**
 By: *[Signature]*
 OCS Area #.....

1593.0
253.0

15.19 ACRES

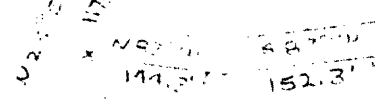
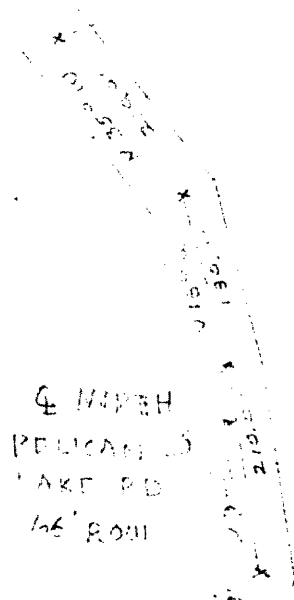
Lot 16

F-W
1256.0'

Lot 17

23.10 ACRES

COMPARE CURRENT TO PREVIOUS
INFORMATION FOR A MEASURE
BOUNDARY LINE. IF TWO
PARCELS SHOWN ON THE
UNRESURVEYED MAP OF PELICAN
WILDS, THE LINE BETWEEN THEM IS



11-200'

N

• Iron Pipe Found
• 8' spikes

• N 56° 00' W
• 200.0'

FISH LAKE
ADDITION

L1169

L1169

L1169

• 300.0'
• 50.0'
• 100.0'
• 100.0'
• 100.0'