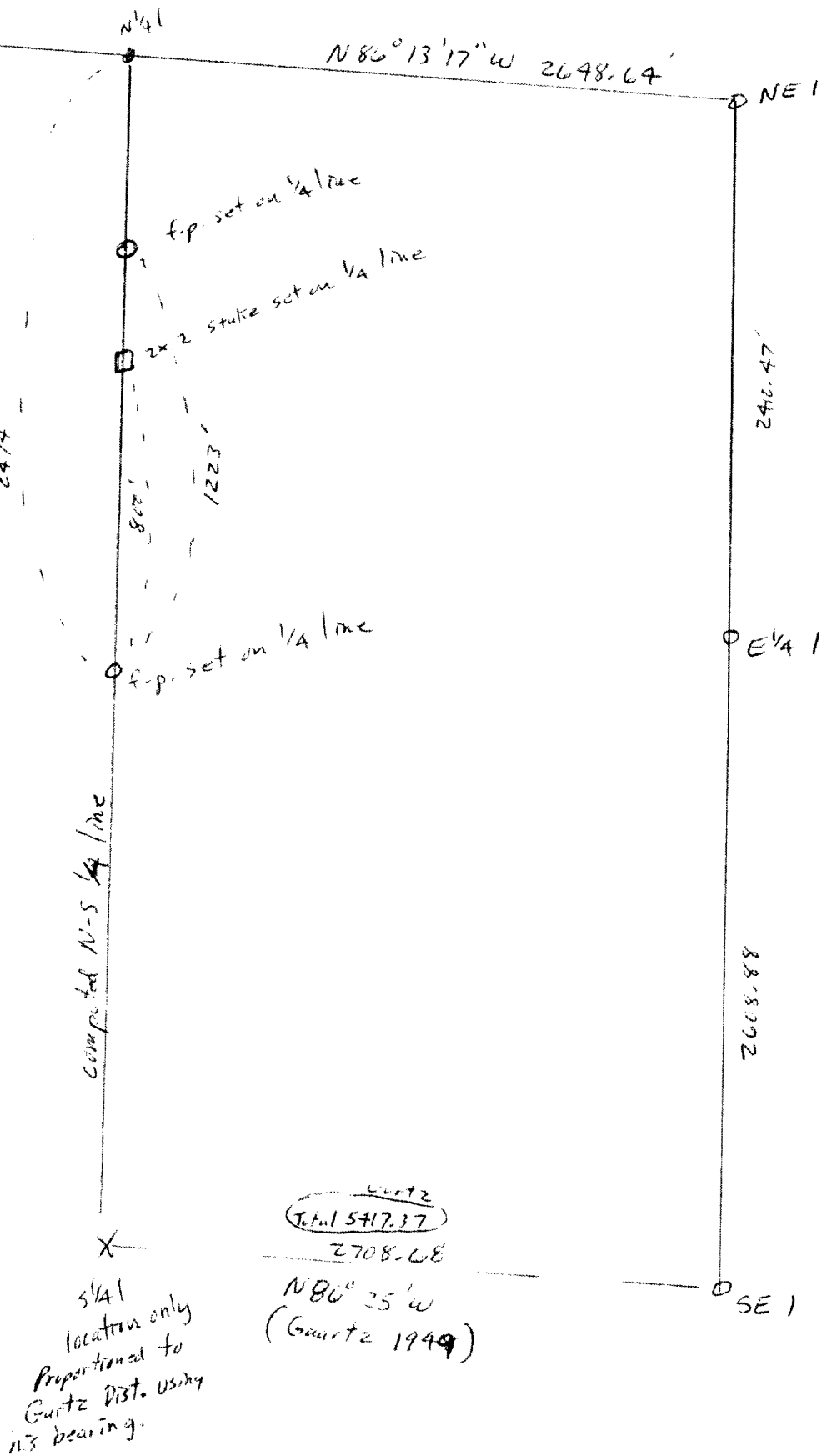


Sec. 1, 38-10

Approx. N/S 1/4 line for Dept. of Natural Resources use only.
Not intended for public use as a survey.

L1171

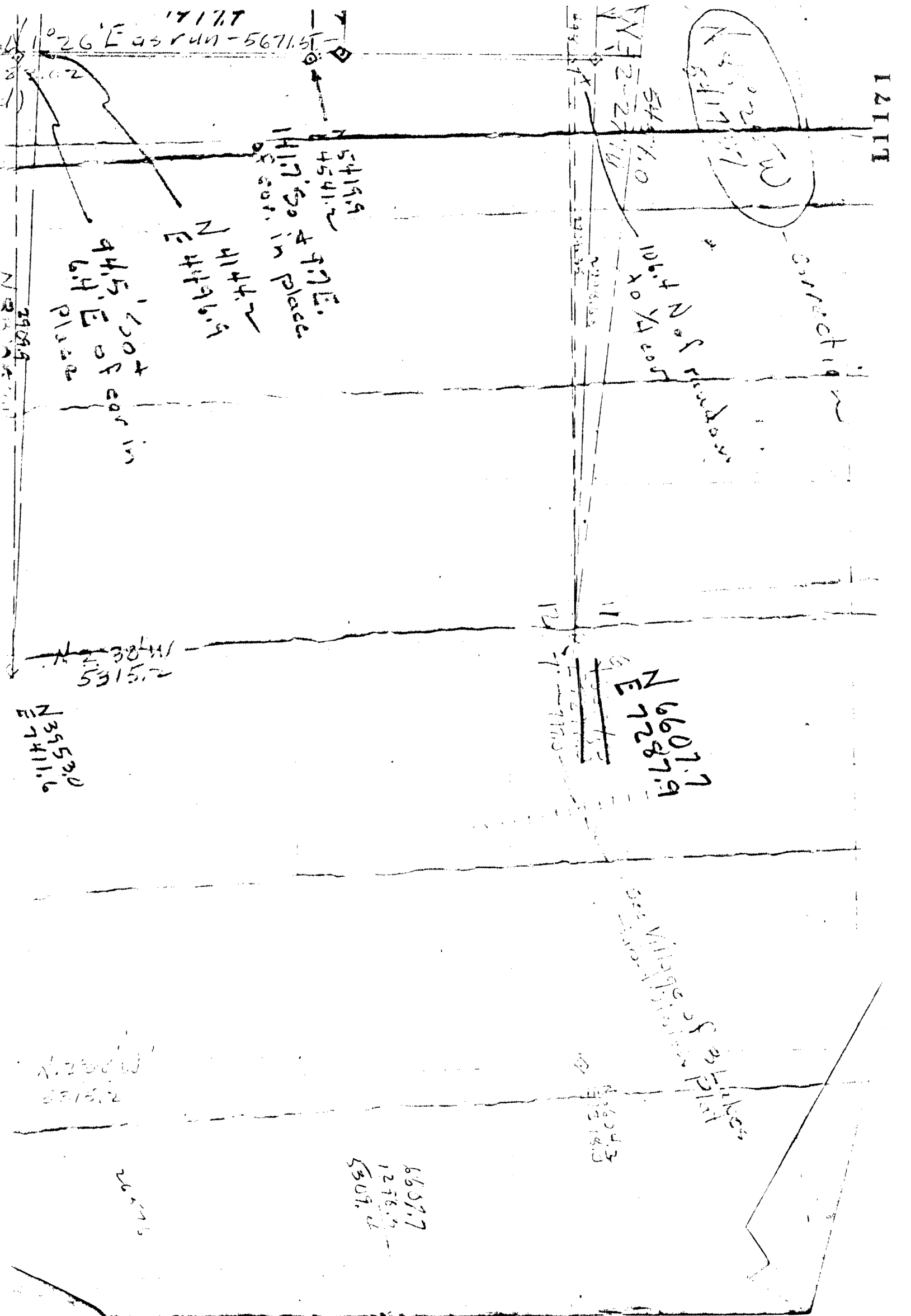
L1171



L1171

RECEIVED & FILED #.....
 Oneida County Surveyor's Office
 Date **DEC. 06 1991**
 By: *[Signature]*
 OCS Area #.....

L1171



1949

County
I 2117

N 66° 07.7'
E 7287.9'

8657.7
1278.2
5309.2

106.4 N of 1/4 corner
x 0 1/4 corner

44.5' 100' x
6.4' E of corner
place

N 41° 44.2'
E 4196.9'

5419.9'
4541.2'
1417' 50' in place
of corner

N 39° 53.0'
E 7411.6'

See Miller's Survey
N 119° 13' 10\"/>

N 63° 43'
E 13218.3'

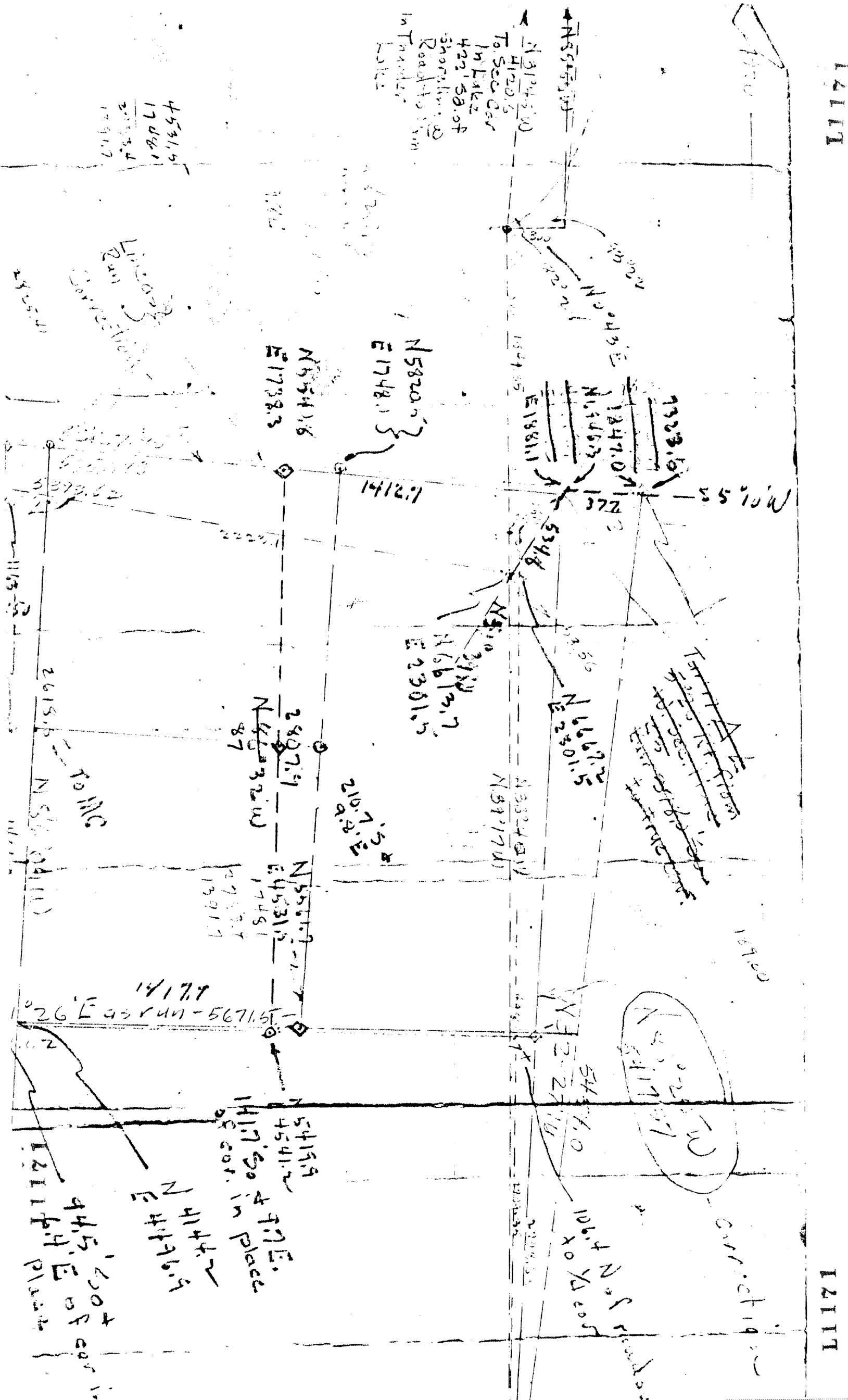
N 23° 00'
E 2518.2'

corners

Corrected

N 1° 22' 17\"/>

14177
26' East run - 5671.5'



4531.5
 1708.1
 2193.4
 1291.7

N 55° 30' 11.0
 2615.5

44.5' 200' of car in place
 12111.4 in place

3/5/90



L1171

Mike

Here is Sec 1 $\frac{1}{4}$ line, and part of Gartz Map. If you need more of Gartz map the copies would come out better if you get it from B. Bandow as mine is in small pieces.

Do not use this quarter line for any surveying purposes, it was only computed on paper for a rough approximation of line.

Mark Seymour

RECEIVED

MAR 7 1990

ONEIDA CO. PLANNING & ZONING