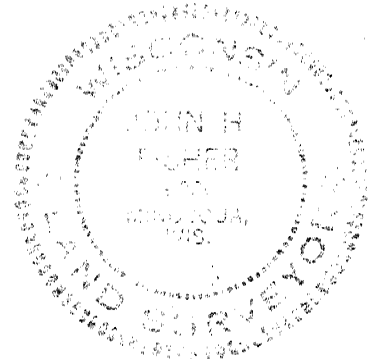
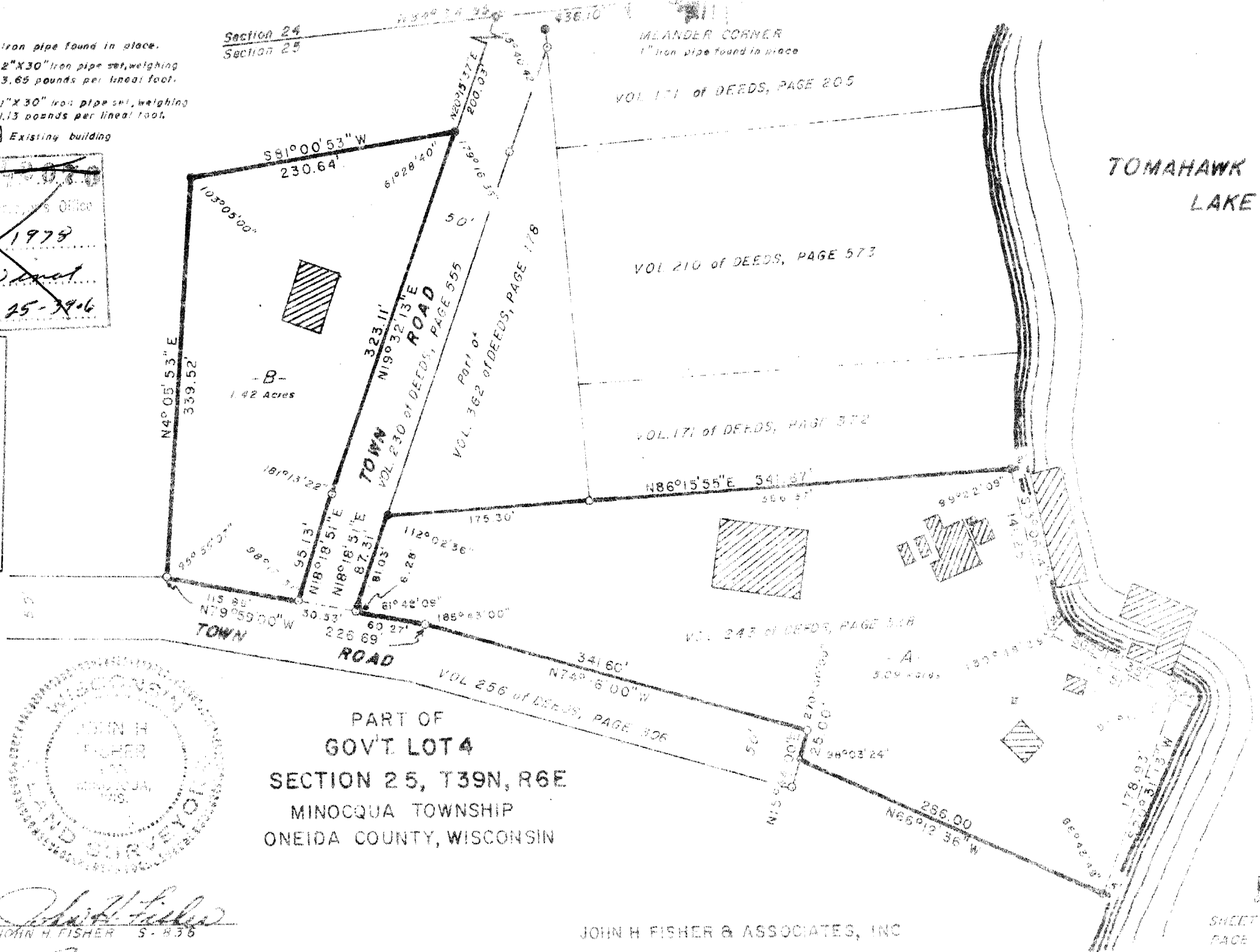


- Iron pipe found in place.
- 2" X 30" iron pipe set, weighing 3.65 pounds per lineal foot.
- 1" X 30" iron pipe set, weighing 1.13 pounds per lineal foot.
- ▨ Existing building

RECEIVED & FILED
 Oneida County Surveyor's Office
 Date: Feb 9, 1978
 By: T. M. W. [Signature]
 DCS Area # 4-25-34.6

RECEIVED & FILED # 4-1-1-8
 Oneida County Surveyor's Office
 Date: FEB 11 1986
 By: MTH
 DCS Area #



John H. Fisher
 JOHN H. FISHER 5-836

PART OF
 GOV'T LOT 4
 SECTION 25, T39N, R6E
 MINOCQUA TOWNSHIP
 ONEIDA COUNTY, WISCONSIN

JOHN H. FISHER & ASSOCIATES, INC

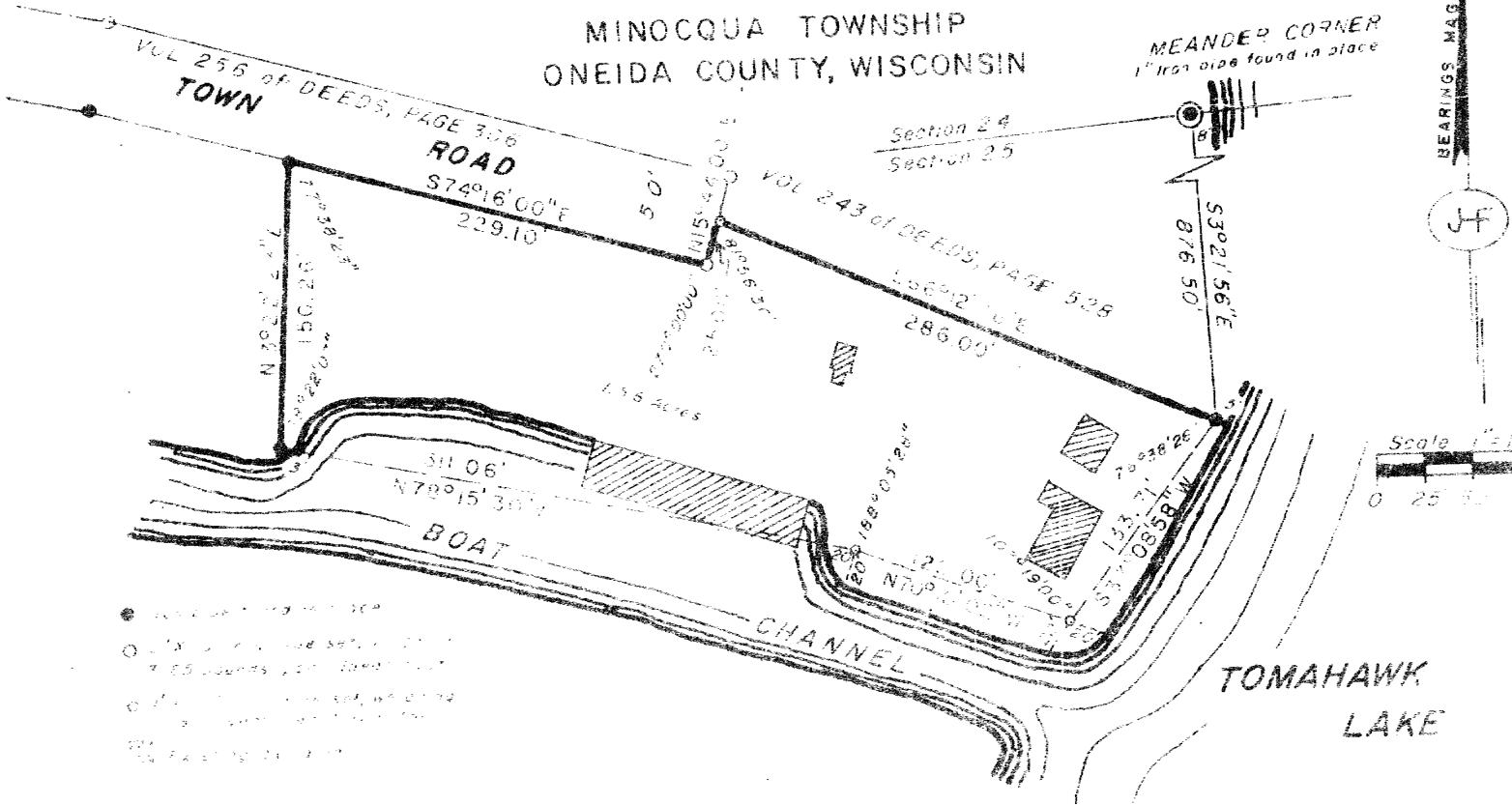
Scale 1" = 100'
 SHEET 1 OF 1
 PAGE 1 OF 2

8117

RECEIVED & FILED # 1119
 Oneida County Surveyor's Office
 Date FEB. 11 1986
 By M J H
 OCS Area #
 PART OF

RECEIVED & FILED # 1119
 Oneida County Surveyor's Office
 Date FEB. 11 1986
 By M J H
 OCS Area # 9-95-3906

GOV'T LOT 4
 SECTION 25, T39N, R6E
 MINOCQUA TOWNSHIP
 ONEIDA COUNTY, WISCONSIN



-
-
-
-
-

MEANDER CORNER
 1" Iron pipe found in place

BEARINGS MAGNETIC



Scale 1" = 100'
 0 25 50

TOMAHAWK LAKE

John H. Fisher