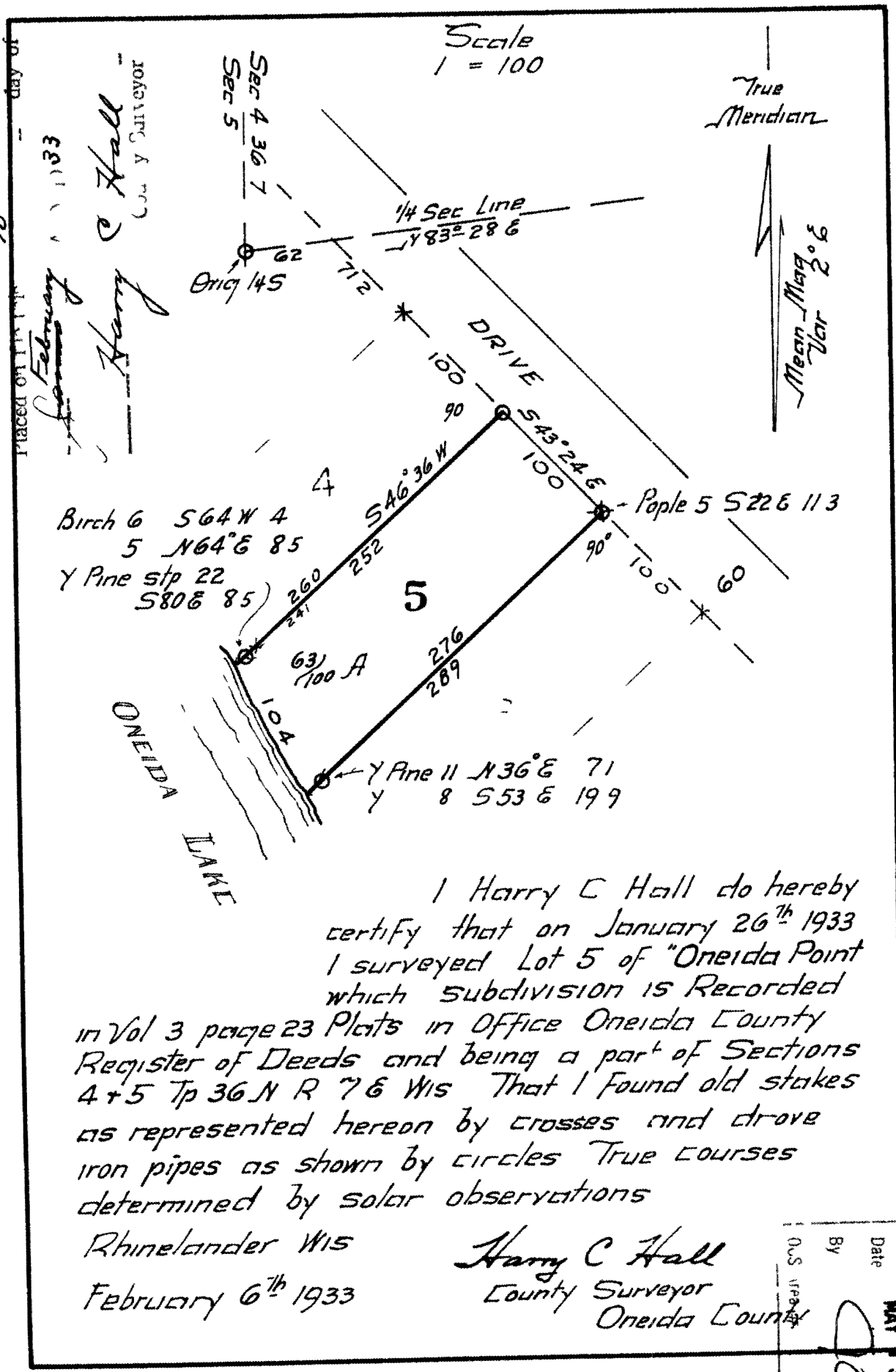


L1182

OFFICE OF THE SURVEYOR
ONEIDA COUNTY

L1182



I Harry C Hall do hereby certify that on January 26th 1933 I surveyed Lot 5 of "Oneida Point" which subdivision is Recorded in Vol 3 page 23 Plats in Office Oneida County Register of Deeds and being a part of Sections 4 + 5 Tp 36 N R 7 E Wis That I found old stakes as represented hereon by crosses and drove iron pipes as shown by circles True Courses determined by solar observations

Rhinelanders Wis
February 6th 1933

Harry C Hall
County Surveyor
Oneida County

RECEIVED & FILED #

On Ida County Surveyor's Office

Date MAY 3 1992

By [Signature]

U.S. [Signature]

335

L1182

L1182