

RECEIVED & FILED # **L119**
 Onondaga County Surveyor's Office
 Date... **FEB. 14 1966**
 By.....
 OCS Area #.....

REVISIONS		
NO.	DATE	BY
1		
2		
3		
4		
5		

H. GREENHILL SURVEY	
LOT 51 CRESCENT LAKE SUBDIVISION	
DRAWN BY F.R.W.	SCALE 1" = 40'
CHK'D	DATE 5-7-57
TRACED	APPR'D
	MATERIAL DRAWING NO. 1966

05
11
11

Vol. 218 - Page 301
Doc. # 171798

1939

3216.18' TO M.C. EAST SHORE CRESCENT LAKE — SEC. LINE

N 87°-59'E 3217.5' TO M.C.

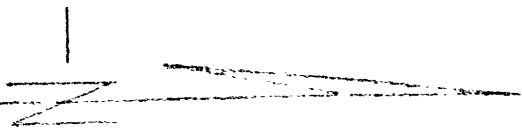
S 31°-36'E
42.45'

S 45°-57'E
58.95'

S 52°-37'E
100'

CRESCENT

L119



SEC. COR.

7 8
18 17

N 89°-31'E GOV'T. BEARING (OCT. 19

M.C.
G.L.O. MON.

N 0°-17' W
85.8'

N 44°-50'E
45.3'

S 73°-02'E
100.2'

S 59°-07'E
114.45'

TIE TRAVERSE

S 74°-24'E
86.1'

S 31°-42'E
42.0'

1119

EC. COR.

N 89°-31'E GOV'T. BEARING (OCT. 1939)

3216.18' TO M.C. EAST SHORE CRESCENT LA.

N 87°-59'E 3217.5' TO M.C.

C
MON.

S 73°-02'E
100.21'

S 59°-07'E
114.45'

TIE TRAVERSE

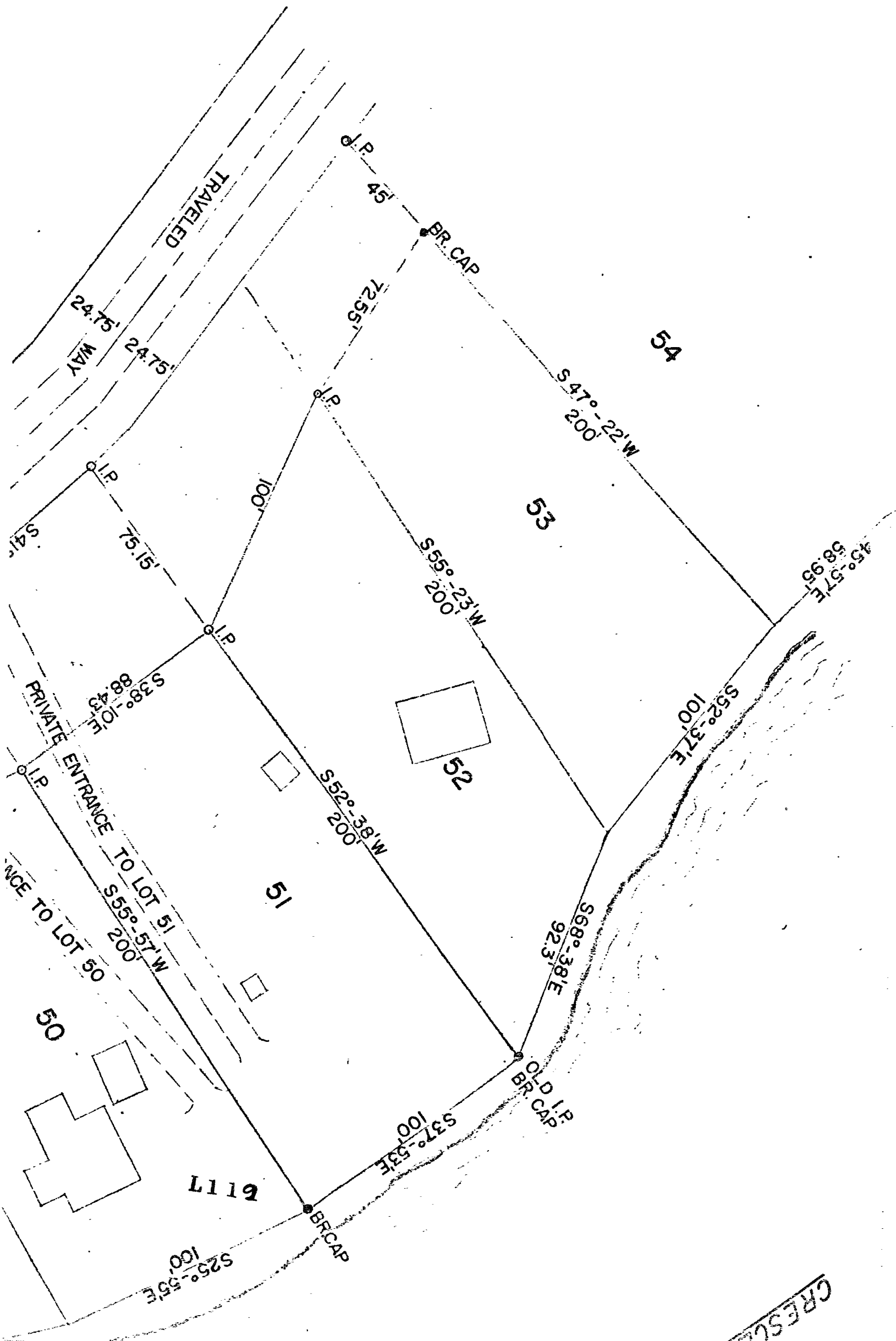
S 74°-24'E
86.1'

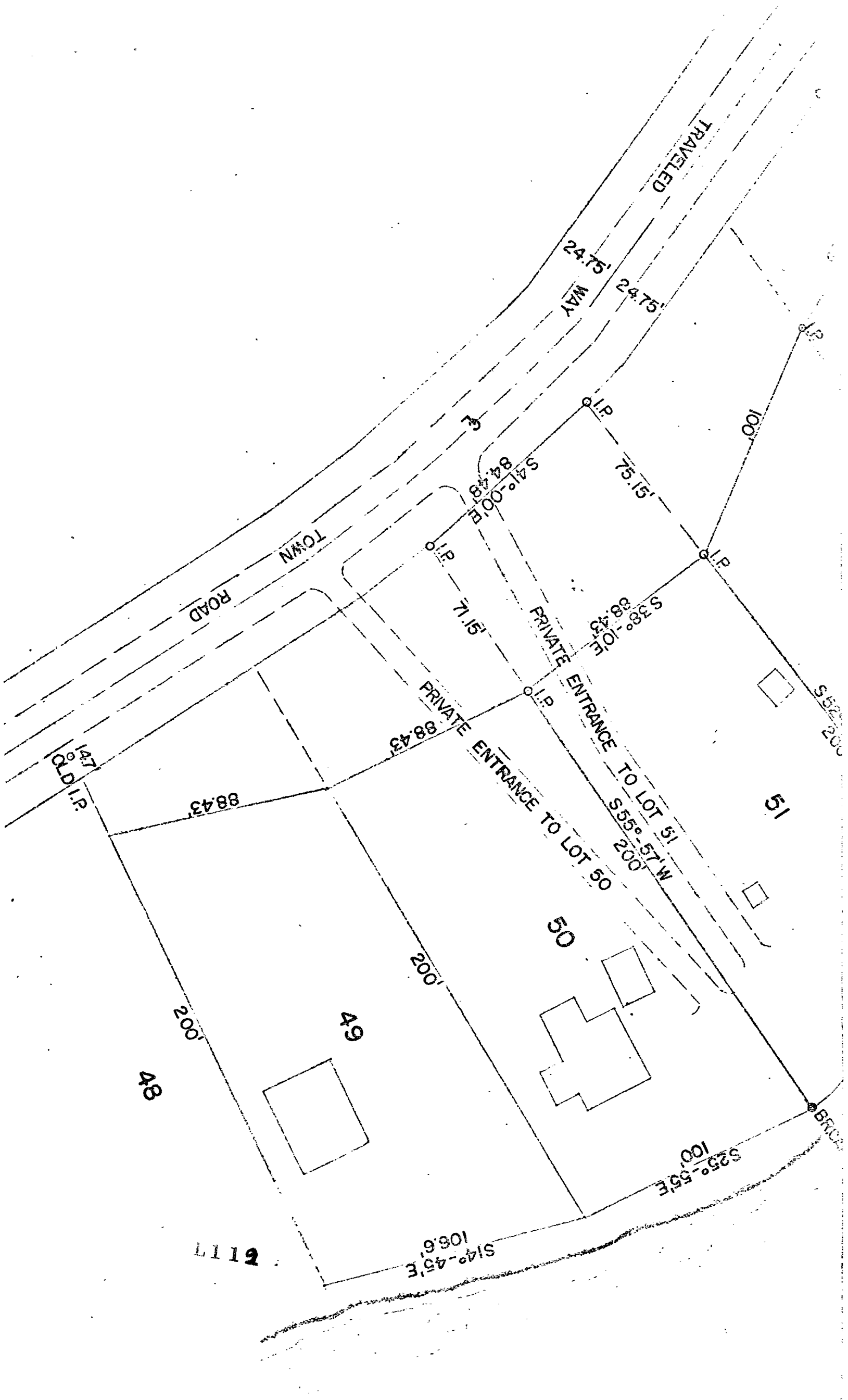
S 31°-36'E
42.45'

S 45°-57'E
58.95'

S 52°

6117





TRAVELED
WAY

TOWN
ROAD

100'

24.75'
24.75'

75.15'

P.I.P.

P.I.P.

P.I.P.

P.I.P.

P.I.P.

P.I.P.

BRIDGE

P.I.P.

51

50

49

48

1119

S 14°-45' E
106.6'

S 25°-55' E
100'

S 55°-57' W
200'

S 38°-10' E
88.43'

71.15'

S 41°-00' E
84.43'

88.43'

200'

200'

PRIVATE ENTRANCE TO LOT 51

PRIVATE ENTRANCE TO LOT 50