

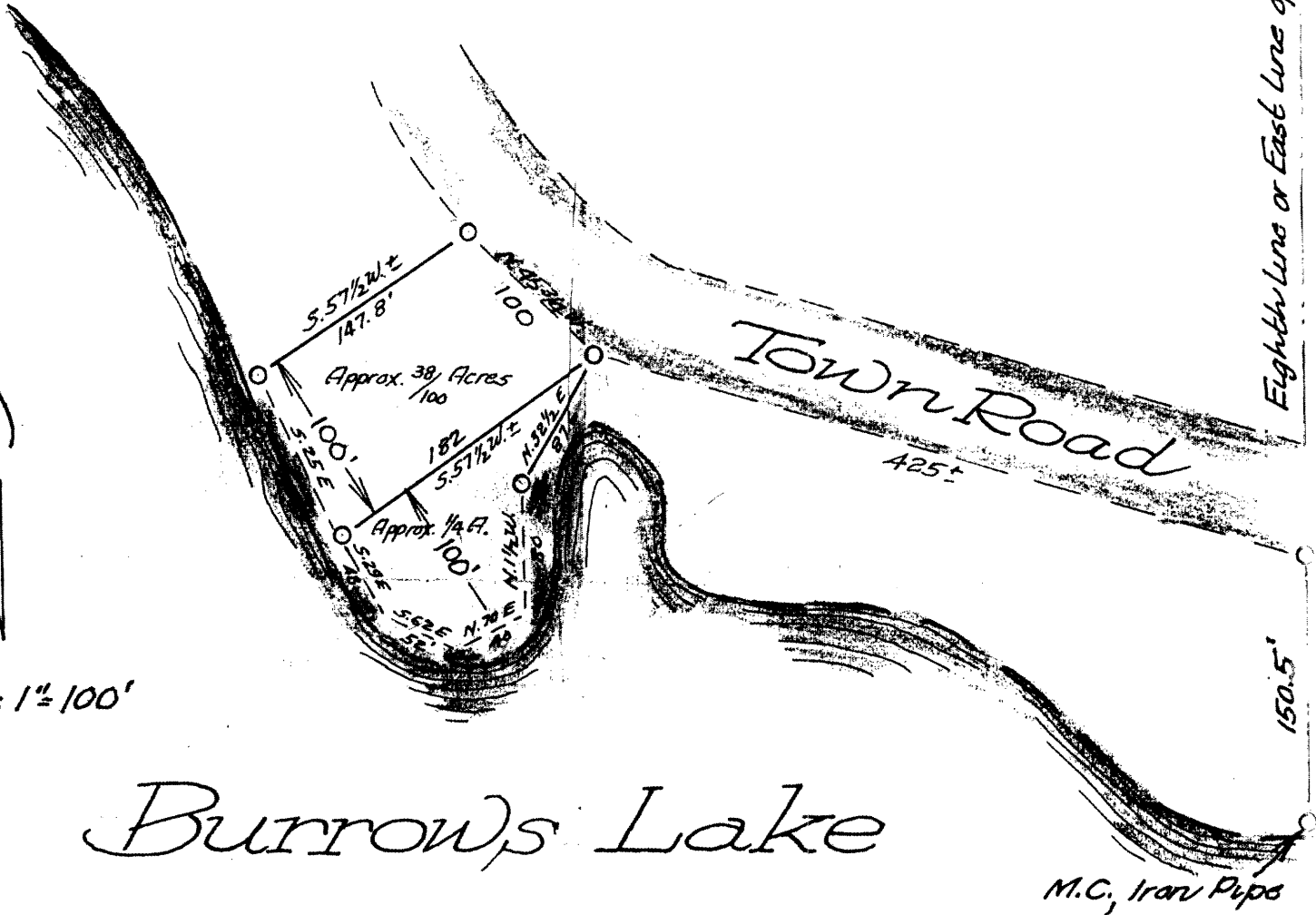
L1197

Two (2) parcels in Gov't Lot One (1) Sec. 3
Township 36 North of Range 5 East
Oneida County, Wisconsin

L1197
Eighth Line or East Line of Gov't Lot 1



Scale: 1" = 100'



Burrows Lake

V. M. Maurice, Engr. Sur.
Rhinelander, Wis. June 15, 1948

RECEIVED & FILED #.....
Oneida County Surveyor's Office
Date SEP. 18 1992
By.....
OCS Area #.....

L1197

L1197