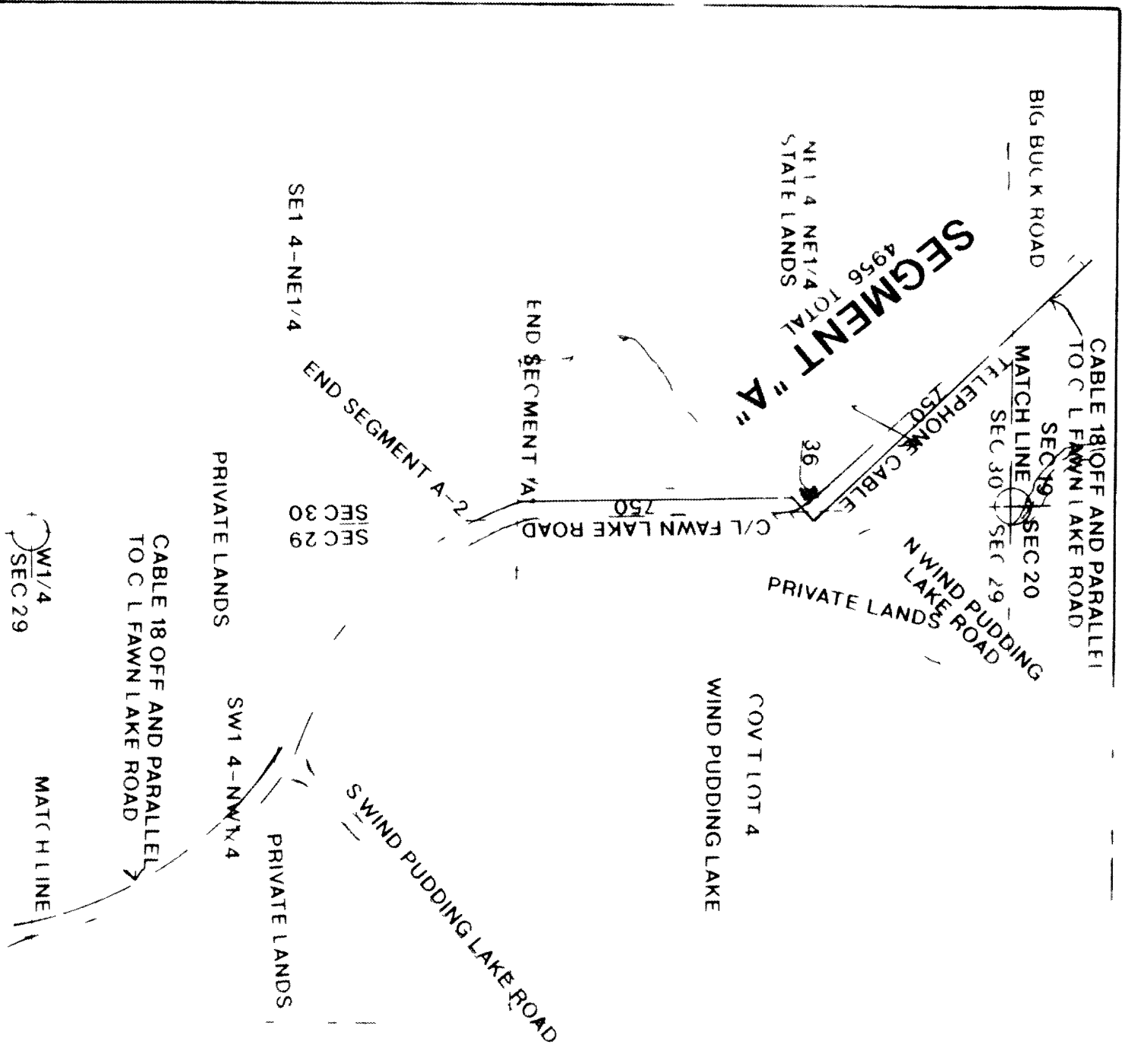


PART OF SECTIONS 29 & 30
T38N R7E TOWN OF LAKE TOMAHAWK
ONEIDA COUNTY WISCONSIN



N
W E
S

NOTE

ALL CORNERS AND 40 LINES SHOWN ARE APPROXIMATE

HEADWATERS TELEPHONE CO

1 = 400
9 1 92

W1/4 SEC 29	MATCHLINE
9152-17	

PART OF SECTIONS 29 & 32
T38N R7E TOWN OF LAKE TOMAHAWK
ONEIDA COUNTY WISCONSIN

250 BEGIN SEGMENT B

SE1/4-SE1/4
SEC 29
STATE LANDS

SW1/4-SE1/4
SEC 29
STATE LANDS

SEGMENT "B"
1580 TOTAL

1580

SEC 29
SEC 32

1320

END OF SEGMENT B

SEC 29 SEC 28
SEC 32 SEC 33

CABLE 18 OFF AND PARALLEL
TO (1) FAWN LAKE ROAD

NW1/4-NE1/4
SEC 32
STATE LANDS

NE1/4-NE1/4
SEC 32
PRIVATE LANDS

PRIVATE LANDS

G/L FAWN LAKE ROAD
TELEPHONE CABLE

MATCH LINE

N
E
W
S

NOTE

ALL CORNERS AND 40 LINES SHOWN ARE APPROXIMATE

HEADWATERS TELEPHONE CO

1 = 400

9/1 92

9152-18

PRIVATE LANDS
MATCH LINE

END SEGMENT C

SE 1/4 NE 1/4
SEC 32
STATE LANDS

CABLE 18 OFF AND PARALLEL
TO C L FAWN LAKE ROAD

SEGMENT "C"
1600 TOTAL

PRIVATE LANDS

DW14
GOVT LOT 4
SEC 33
BEGIN SEGMENT C

PRIVATE LANDS

GOVT LOT 1
SEC 32
STATE LANDS

SEC 32
SEC 33

SAND LAKE ROAD

C L FAWN LAKE ROAD
TELEPHONE CABLE

FAWN LAKE

W

N

E

S

PART OF SECTIONS 32 & 33
T33N R7E TOWN OF LAKE TOMAHAWK
ONEIDA COUNTY, WISCONSIN

NOTE

ALL CORNERS AND 40 LINE S SHOWN ARE APPROXIMATE

HEADWATERS TELEPHONE CO

1 = 400
9 1 92

PART OF SECTION 33 T38N R7E
TOWN OF LAKE TOMAHAWK
ONEIDA COUNTY WISCONSIN

BAND LAKE ROAD

PRIVATE LANDS

LUMEN LAKE ROAD

PRIVATE LANDS

LUMEN LAKE

CABLE 18 OFF AND PARALLEL
TO C L FAWN LAKE ROAD

STATE LANDS
SW1 4 SW1 4
SEC 33

PRIVATE LANDS
GOV T LOT 8
SEC 33

PRIVATE LANDS

GOV T LOT 7
SEC 33

C/L FAWN LAKE ROAD
TELEPHONE CABLE

PRIVATE LANDS

W

N

E

S

STATE LANDS
SE1 4-SE1 4
SEC 33

END SEGMENT D

SEGMENT "D"
1230 TOTAL
1230

1230

BEGIN SEGMENT D

SEC 33 SEC 34
150
SEC 4 SEC 3

1/4 SEC 33

NOTE

ALL CORNERS AND 40 LINES SHOWN ARE APPROXIMATE

HEADWATERS TELEPHONE CO

1 = 400

9/1/92

9152-20