

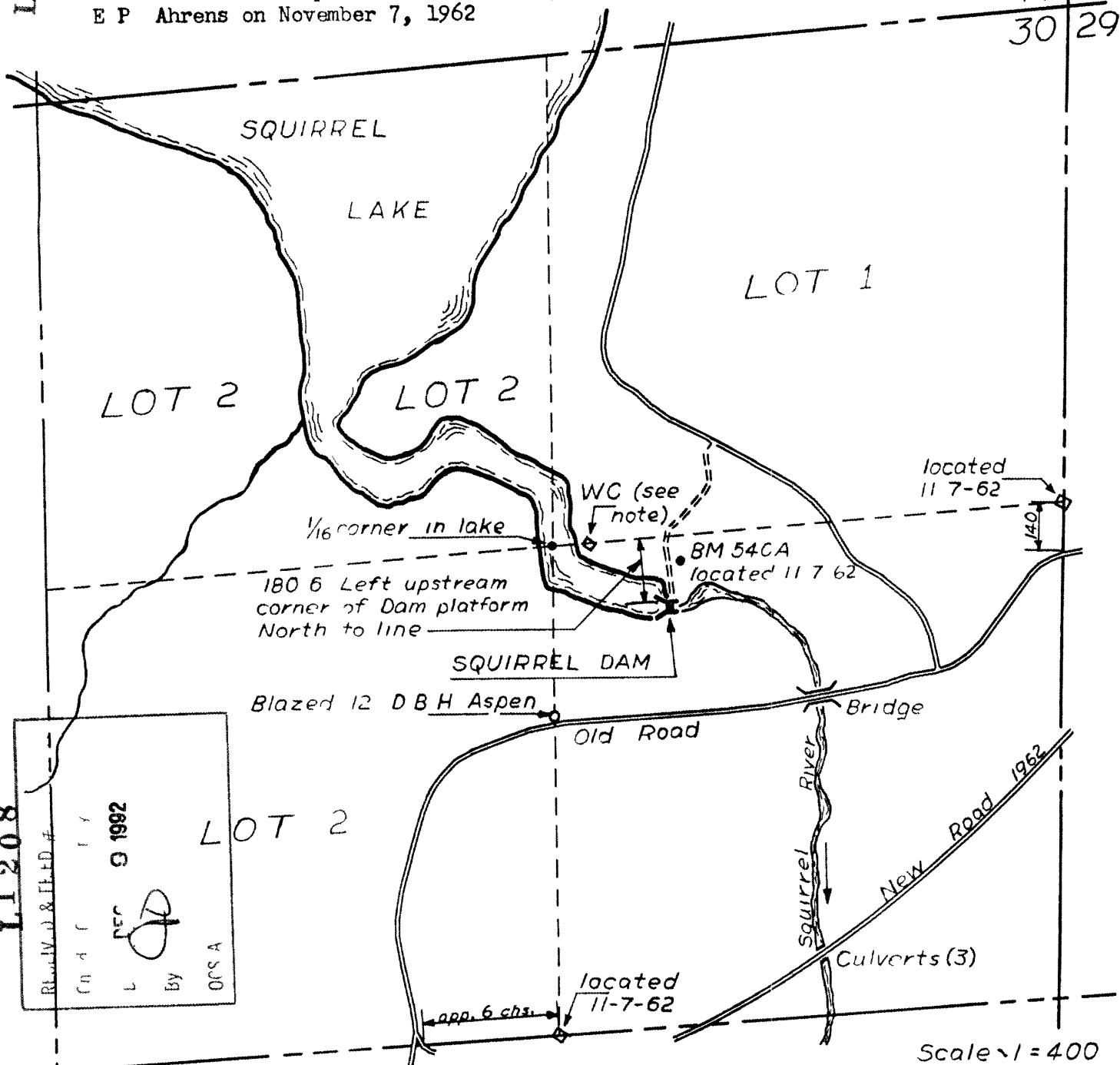
L 208

L 208

SQUIRREL RESERVOIR

Land ownership and Bench Mark Exploration by F.R. Klein and E P Ahrens on November 7, 1962

19 20
30 29



L 208

BLVD. & H.L.D.#
 C n d r
 L DEC 9 1962
 By
 OCS A

(Part of Area shown) NE 1/4 Section 30, T 39 N., R 5 E, Town of Minocqua, Oneida County. W V I Co owns all of Lot 2 and the SE NE in Fee

NOTE: Witness corner to 1/16 corner was found lying on the ground about 20' from the water. It is a 4" x 4" cedar post, pointed at top and inscribed "WC 100 FT W TO 1/16". Lower portion of the post was rotted off. At base of the stake was a hole with rotted wood that appeared to be spot where stake was located. A 4' maple, 3" D B.H., was placed in the hole. The old witness corner was left at the base of the new stake.

BM 540A is a bronze tablet marked Railroad Commission of Wisconsin set in a Concrete Post on the left side of the Dam 104 2' left of the upstream abutment and 112 4' from the left downstream corner of the platform over Dam and 24' East of center line of road to Dam. Elevation = 107.57' (WPSComm Datum)

L 208