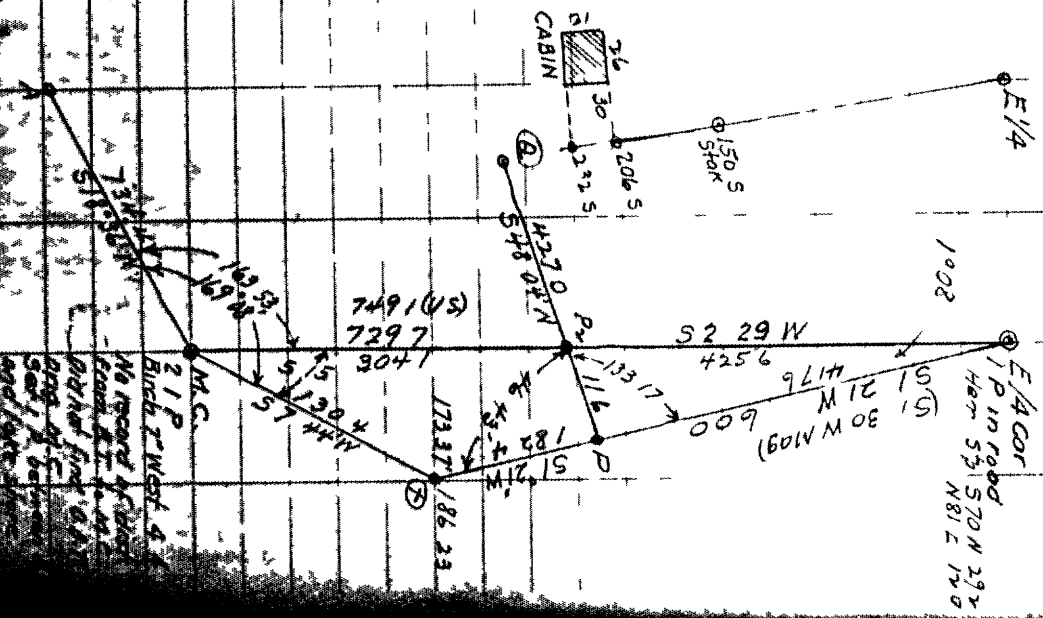


L1 221  
Mildenberg

T39N-R4E SEC 8  
SQUAW LAKE LOTS 1 & 2  
FOR Mildenberg (Hunter Atty)  
May 30 - Line S 51



Howe's BK 9 22  
LAKE SHORE TRAVERSE  
L1 221

S+O	Angle	Line	Bearing	Dist	Remarks
E/4		E/4-MC	S 2 29 N	729.7	729.7
MC	196.07	MC-A	S 18 36 W	134.4	
A	159.12	A-B	S 2 12 E	124.1	
B	214.37	B-C	S 32 29 W	295.7	APPS At 275.7
C	202.22	C-D	S 54 47 N	125.6	
D	155.58	D-E	S 40 42 N	186	
E	16.15	E-F	S 22 00 W	147.3	
F	158.56	F-G	S 56 W	9.3	
G	167.02	G-H	S 12 02 E	18.3	
H	259.2	H-I	S 17 24 W	2.3	
I	170.58	I-J	S 22 W	91.7	
J	186.48	J-K	S 1.10 N	125.1	
K	203.19	K-L	S 08 29 W	147.6	
L	152.11	L-M	S 10 40 W	177.4	
M	184.30	M-N	S 15 10 W	144.1	
N	168.18	N-O	S 3 28 N	230.3	
O	210.50	O-MC	S 34 18 N	46.0	
	904.49			406.6	MC-MC

RECEIVED & FILED #  
R/S  
Bozeman County Surveyor's Office  
APR 12 1992

MC Between Sec 8 & 17  
Found old scribed post  
Set 2 Iron pipe New Elm 8  
5.59 W 24.1

2 IP  
Bunch West 4  
No record of  
found old scribed  
post  
Set 2 Iron pipe  
New Elm 8  
5.59 W 24.1

L1221

ROAD TRAVERSE

Sta	Angle	LINE	Beginning	Dist
		EA-P2	5 2 29 W	485.6
		P2-Q	5 48 0 W	427.0
Q	158 28	Q-R	5 26 31 W	153.0
R	182 48	R-S	5 29 20 W	378.8
S	184 08	S-T	5 33 28 W	192.4
T	180 58	T-U	5 34 26 W	129.7
U	149 36	U-V	5 4 02 W	408.3
V	203 44	V-Y	5 27 46 W	408.8
Y	164 48	Y-Z	5 12 34 W	269.0
Z	180 2	Z-MC	5 12 46 W	145.0
MC	129 51	MC-D	8 47 N 35 55 E	-
Z	-99 43	Z-1800	N 86 57 W	364.9

At E 1/8 on Sec 7 Line found old striped post  
and 8 - sum - 118 -  
Set new post and marked Made 7<sup>th</sup> S 15 W 28 8'

L1221

SQUARE OBSERVATION

L122123

Line 5 51

Elevation 45 52' (From Map)

All horizontal angles clockwise

Match Cent Stand Time

Transit at Sta Q BS on Sta P

Sun pointers

Hor Ang

Vert Angle

Time

72° 14	54 03	9 46
73 22	54 48	
73 45	54 51	
74 40	55 33	
74 24	55 40	
74 51	56 06	
77 02	56 25	
77 0	56 5	
77 36	57 33	
AV 75 24	AV 76 12	9 56

L1221

L1221

Solar Observation

Corrections

Star 1 90° & Mer

Correct 24h laws

" for time zone

Greenwich standard time

Sun's declination June 6<sup>th</sup>

Change since Obs 39 x 29

Observed Altitude  
Refraction parallel

56 12.0  
15 56 71.5

Cor Z =  $\frac{Sun \text{ Alt} - Sun \text{ L} \times Sun \text{ L}}{cos \text{ L} \times cos \text{ L}}$

=  $\frac{Sun 22 \text{ } 218 - Sun 26 \text{ } 114 \text{ } Sun \text{ L} \text{ } 2}{cos 26 \text{ } 114 \text{ } cos \text{ L} \text{ } 2}$

log Sin 26 114

T 91.504  
T 1.506  
T 77.550  
Nat: 9.631

Nat Sin 22 318

38347  
- 29681  
21318

log Cos 26 114 - 774502  
log Cos 45 2 - 78822

log 21318 T 32875  
T 158824  
log cos Z T 744051  
Z = 56.37

Bearing of Sun

Angle sun to P

Bearing of A to P

L1221

556 37  
75 21  
732 01

N 48° 00' E

COORDINATES

LAKE SHORE TRAVERSE

	NORTH	SOUTH	EAST	WEST
MC	0	0	0	0
MC between 2889		229.07		31.61
A		858.39		74.47
B		980.49		69.70
C		1044.39		110.27
D		1116.82		212.88
E		1257.80		334.35
F		1394.38		389.52
G		1485.66		391.00
H		601.35		366.34
I		1678.92		390.65
J		1769.64		403.99
K		100.08		436.71
L		2007.02		528.56
M		2110.00		561.40
N		2219.43		599.10
O		2549.21		613.03
MC between Sec 8 & 17		2587.21		638.95

L1221

L1221

L1221

COORDINATES (Cont'd)

L122122

Sto	ROAD TRAVERSE			
	NORTH	SOUTH	EAST	WEST
M.C. 889	0	0	0	0
P <sub>2</sub>		42520		1844
Q		71089		33647
R		84777		40481
S		117800		59038
T		133850		69647
U		144547		76980
V		182275		79851
W		221447		92296
Y		247751		104760
Z		261951		107978
MC		252915		62823

E/8 on S Line 260010 144416

L1221

L1221