

RANGE 30.00 S 11.75 W

Dirt - 1870 - 80.10 V. 30° E (corrected)

SEC 1A

SEC 2D

MAP # L1 25
 DATE FILLED 09 Dec 19-37-8E
 BY [signature]
 DESCRIPTION Comparison of Available Fields
 DALEIDA CO SURVEYOR S OFFICE
 Oct. 1951

VINCENNES - 1851
 VANGHAN - 1899-1905
 DORT - 1895
 (and orig of sec 19-20)

6064 (corrected)

79.23 (6 1/2 1893)

L1 259

Thursday September 24, 1964

268th day - 98 days to come

E 1/2 Sec 26-31-7

From N 1/4 E

N

S

E

W

N 86 15E - 399'

260

3766

S 2-15E 4032-

4029 1,58

S 2-11E 9996

134-182

S 88- W-41 00-

1,0 4658

8,9 4306

266 1,1800 1213
2379 1010 1048
193 2170

Friday September 25, 1964

269th day - 97 days to come

R = A G T A (13-38)

= 1,00 x 4,153 = 412

S E 1/4 Sec 26

N

S

E

W

N 88-10E 4012-

111-

4010

S 2-35E 4038-

4034-182

S 88 W- 4060-

1,42 4658
1,11-4176 4192-4058
1,17 4058

4059-134

103300 Tan 10531

1220
1218
20

4
1
2
1

79381

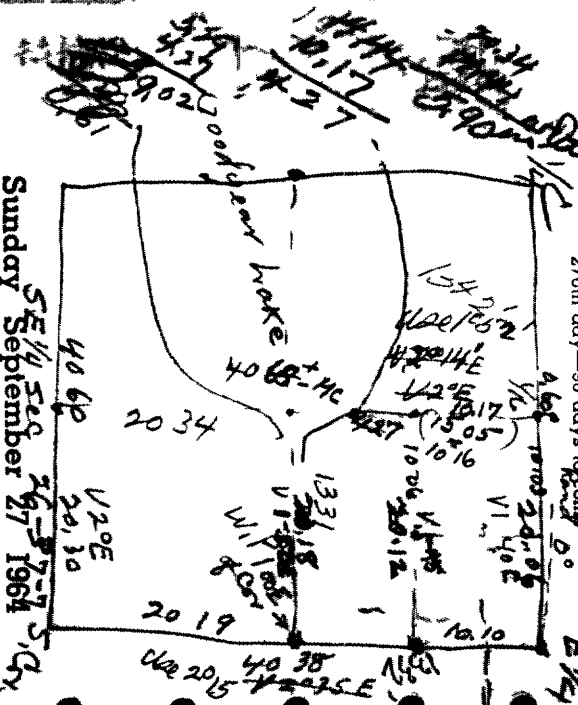
7

4

1

Sunday September 27 1964

270th day - 96 days to come



Sunday September 27 1964

271st day - 95 days to come

over water

76-55

11976-22

76-22

11976-22

76-22

11976-22

76-22

11976-22

76-22

11976-22

Sunday September 27 1964

272nd day - 94 days to come

More N. from ME on 1/2 line
 along 1/8 line played
 5.29 set picked 5 edge rd. after
 8.55 to 1st on line
 14.44 to 1/8 in swim after 1445
 Dist. IP at 1.07 S. 125.29 paces
 (4.27 N. of MC = 10,175 of 1/8
 for 1/2 of 1/8 by should 10,13
 BT = WB 40 N 8 E 0 15 from R. 13
 Mean. E. from IP (pick line) 11 1/2
 8.65 to hand just 10 ft spring
 set forward for Δ over water
 offset 100 N @ 90° angle
 to hand over water = 76-22
 Dist. over = 4 12 + 8.65 = 12.79
 Mean. 7.35 more (to 20.12) + 8.65 = 28.99
 Then more N. (12.44 E) to S. Cor
 10.10 - Curve 0 17 W. of S. Cor
 by IP aa rd. BT - Tam 10537551
 (over)

Tuesday September 29, 1964

273rd day - 83 days to come

1/1 on N-E-S-E

N S E W

N88-20E 20 06 0 59 --- 2005

S2-35E - 20 19 - 2017 0 91

S88-10W - 20 18

0 65 - 2017
 20 82 20 96 20 17
 0 59 - 20 17
 20 23 0 79

20.2 $\sqrt{0.79000}$
 606
 1840
 1818

 230

20.2 Station
 Stumble

N S E W
 0 59 --- 20 05

S88 20W 20 06 - 40 62 1 32
 S/- 22F 110.64 -

N88E 20 30 0 71

41 21 20 09
 75 21 61
 40.50 1.56
 = 20131

Wednesday September 30, 1964

274th day - 82 days to come

6-255
 53-245
 59-600

A 6-255
 B 270
 C 1119

53345
 1200
 2709

$b = \frac{1}{\sqrt{2}} \times 5. \dots$

1119 $\sqrt{3.70000}$ 2413
 2238 28046
 4620 14478
 4476 9662
 1440 193040
 1119 19414998

3210 19414998

4064 9975

4064 9975
 1.0226 50320
 24384 365116
 8128 365796
 12192 3651668
 132486 4061968

405-
 15800
 1215
 3550
 3240
 3100

4064 9975
 1.0226 50320
 24384 365116
 8128 365796
 12192 3651668
 132486 4061968