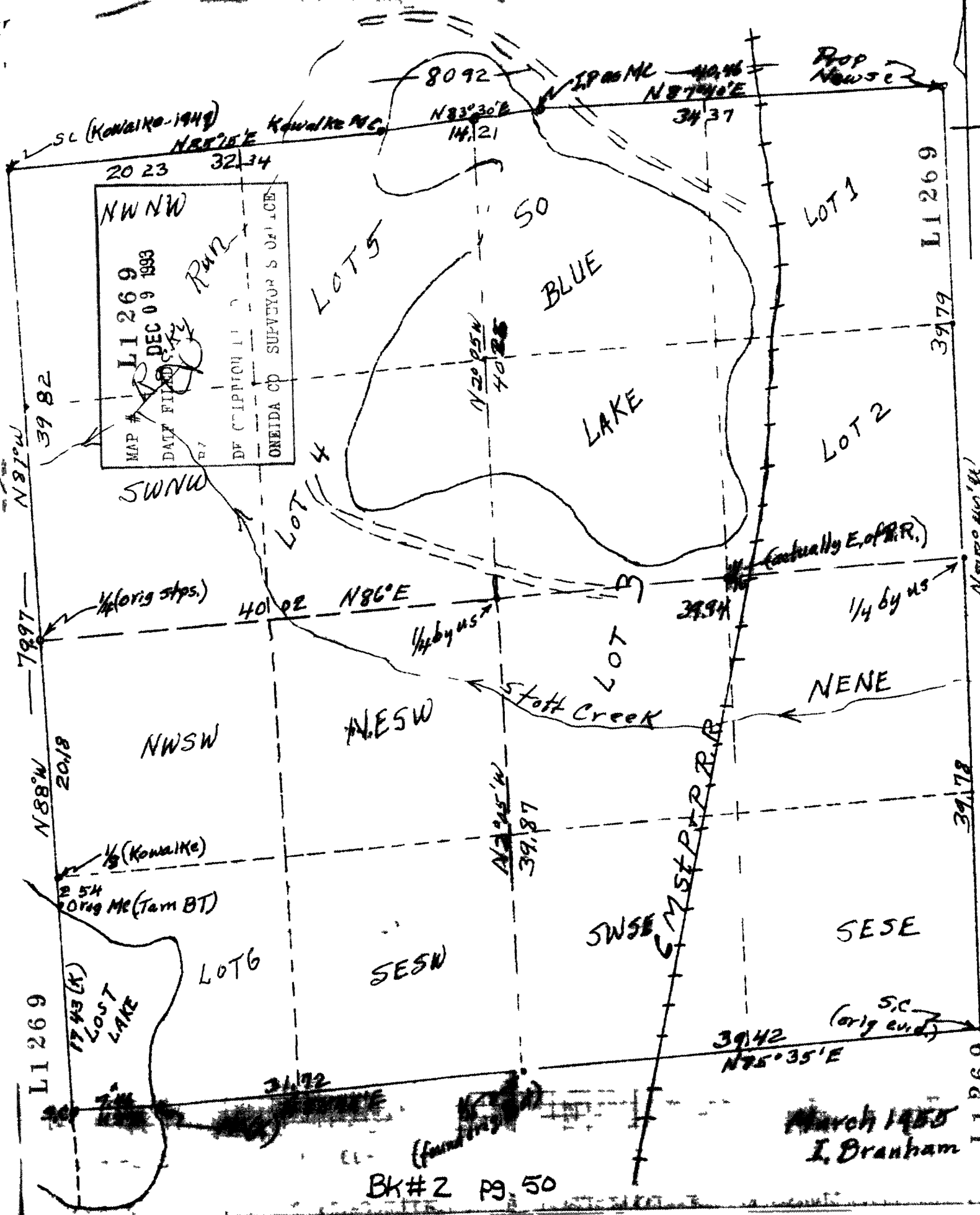


SEC 26-38-6E

Scale = 1" = 100'

Bearings approx Magn.

Mag
N



NWNW
 LI 269
 MAP # 1743 (K)
 DATE FILED DEC 09 1933
 DE CLIPMICH I RWR
 ONEIDA CO SUPERVISOR S OF PLCE

SWNW

1/4 (orig stps.)

NWSW

1/4 (Kowalke)

1/4 (Orig MC (Tam BT))

1743 (K)
 LOST LAKE

LOT 6

SESW

SWSE

SESE

3942 (orig end)
 N85°35'E

March 1958
 I. Branham

BK # 2 Pg. 50

(found)

(actually E. of R.R.)

1/4 by us

1/4 by us

Stott Creek

MSF P.R.R.
 6 M ST P.R.R.

SC (Kowalke-1949)
 N87°15'E
 Kowalke MC
 20 23 32 34
 NWNW
 LI 269
 MAP # 1743 (K)
 DATE FILED DEC 09 1933
 DE CLIPMICH I RWR
 ONEIDA CO SUPERVISOR S OF PLCE

N87°W 3982
 N88°W 2018
 L1 269
 1743 (K)

8092
 N83°30'E
 14.21
 N87°15'E
 34.37
 1945 MC
 1946

LOT 5

LOT 4

LOT 1

LOT 2

LOT

L1 269

3979

N87°00'41" W

3978

L1 269

Prop New 52

