

BK # 2 Pg 90

GOODYEAR LAKE

9-26-57

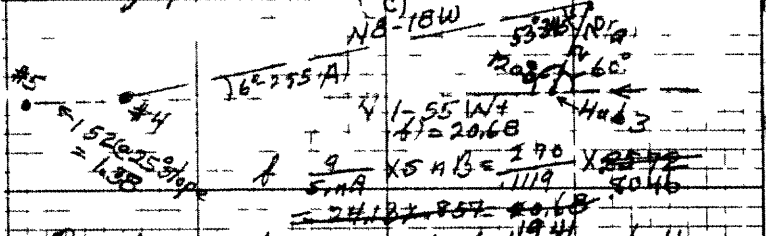
AH + I Branham (J Barkus)

K.E.

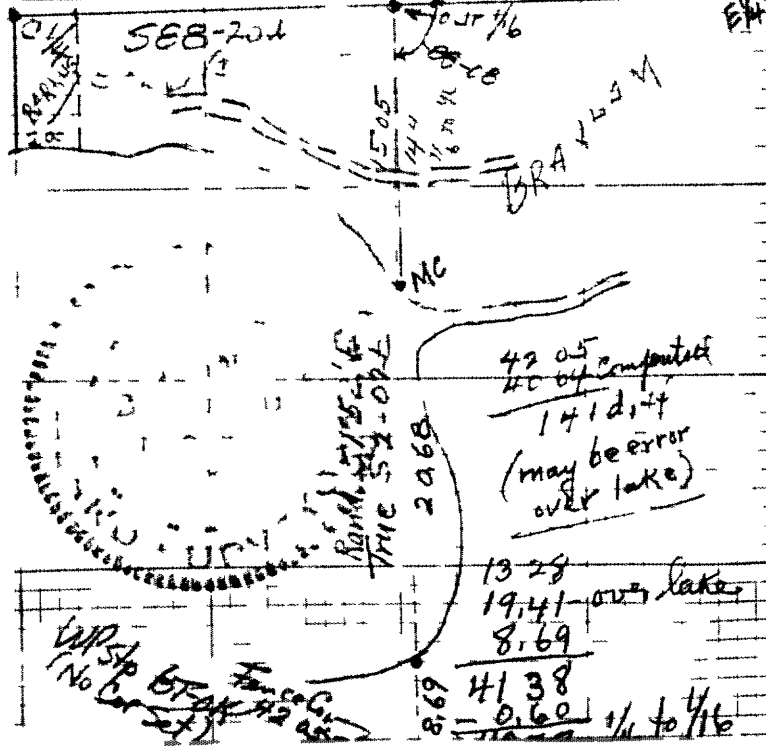
353 10

TO CHECK E 1/2 LINE S 26° 37' 10" W

Set transit over our Hub on E-W line
 random at 20.06 W. of E 1/4 (rand. is at 2° and
 it is 0.60 S. of rand to our 1/6 Post)
 Turn L off rand E-S of 88° 05' and run
 line S. (1.1052 E) Dist to 1/6 = 0.60 ch.
 5.505 to Hub (near high land in SW)
 9.486 " " 2 (just N. of road)
 13.280 " " 3 (ant hill) N. of E end of lake
 (+1.770 to picket on bank at edge of marsh)
 = 15.05)
 Triang from #3 over lake -



Over #4 S. of lake in marsh bet. Steep hill
 1.52 to #5 top of hill @ 25° slope (ded 0.114)
 at 8.83 from lake - came 0.12 W of fence cor
 Fence Cor is about 0.12 N of our prev picket
 Set 20.20 W. of SE Sag. Cor. (at 12.942 00° 00'
 Old BT 3tp. (believe Vaughn) is N 30° W 6' from
 fence cor - seems to face ± 10° S N of
 fence cor
 Tot. dist meas. 42.65 - 0.60 = 42.05 from
 our 1/6 to Fence Cor. approx. 1/6 on line
 We set Tam. P. 044 E of our 15.05 picket
 N side lake - BTs - where cm 5.066 - 0.60 dist over
 This check our comp. + loc. C 1/4 S 26° 37' 10" W
 which is that we need on sale lake in lake
 - random cot 20.06



MAP # 11276
 DATE DEC 09 1953
 BY [Signature]
 DLG RIT U F I E U
 CONFIDENTIAL

11276

11276

11276