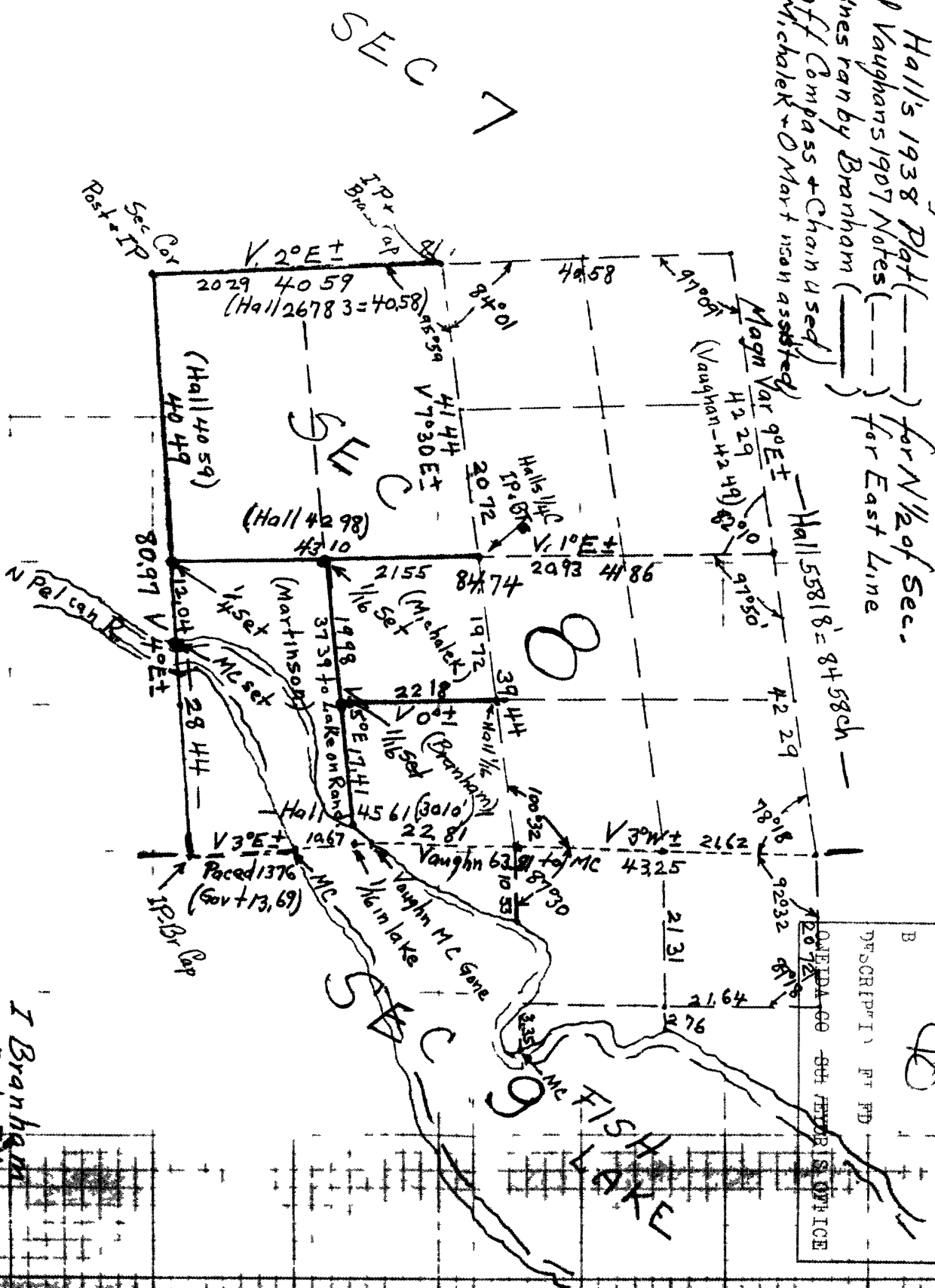


SUB-DIV of Sec. 8-36N-10E

using

Hall's 1938 Plat (---) for N 1/2 of Sec. and Vaughans 1907 Notes (---) for East Line Plus Lines ran by Branham (---) (Staff Compass + Chain used) (S Michalek + O Mart used as assisted)



MAP #	
DATE FILED	DEC 09 1988
B	
DESCRIPTIVE	PT PD
DAVIDA CO	SURVEYORS OFFICE

Br # 2 Pg 94

I Branham
5-1-54