

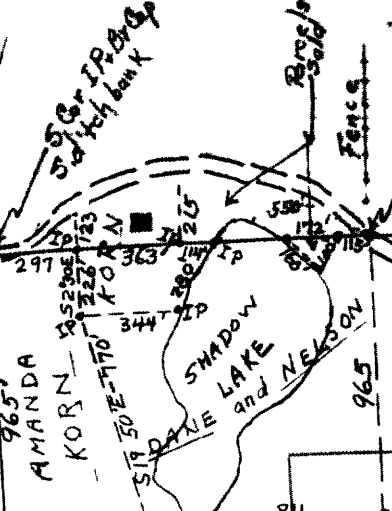
Scale 1" = 10 ch. Bearings Approx. Magn.
(Field Work 1956 to 1960)

Co Rd. "K"

586-40' W - 80 24 (per Vaughan)
4672 (Vaughan)

2686 (Vaughan 2691)

LI 282



BRANHAM
AMANDA
KORN
588E (Vaughan) (computed)
53-30E +
507
IP NB6 40E

MAF #	DATE	PI	DESCRIPTION
L1 282	DEC 09 1953		OHLEDA CO SURVEYOR S OFFICER

IP at 1462 (685) S of 18
and 354 N of our 16

Vaughan's 8 steps found
at the corner
21 23 4 72 24 or

16/15
(Vaughan BT ok)

4803

BRANHAM
Old Post + BT steps at fence cor
Re set by us

to by us approx
in fence 103E of cor

1/4 cor not def intely located
(believe about E bank of road)

Found Vaughan BT ok
Set Post 5/7
Only blazed Purple for BTs

BRANHAM
Vaughan's BT stand by
We set new post
(with 1/4 W & 1/2 NW 20)

BRANHAM Comp 39 64
3972 (Vaughan)
about right

Easement
Dorsch to Branham
1 rod N along line
DORSCH

DORSCH (39 54 - Vaughan)
(? should be 40 or)
39 96

BRANHAM
Old P by Vaughn 1061 W of MC
MC-end of fence re-set by us 77 53 + 4 19 ch W
Vaughan says 572 over lake - our meas 419
40 91 (Vaughan to MC)
46 28 2
5 Cor 147 m lake top or 9 rods
H's cor at 77 86 from 5 Cor
Our re-rod at 77 to lake 77 53

Cor ev d

+ Post re set
by us from
of Vaughn

1/4 Town road 3700 W of Cor
1744E of Road-end of Clearing

5 Cor by Dorr
and Vaughn BT ok
(Pine st 1/8 S 33 E 28)
Set New Post + P
BTs

Checks 42.17 @ 2042'E
42.25 (Vaughan)

LI 282

