

AT # 11332
 FEB 17 1988

B2077.

NS E
 1086 14 total

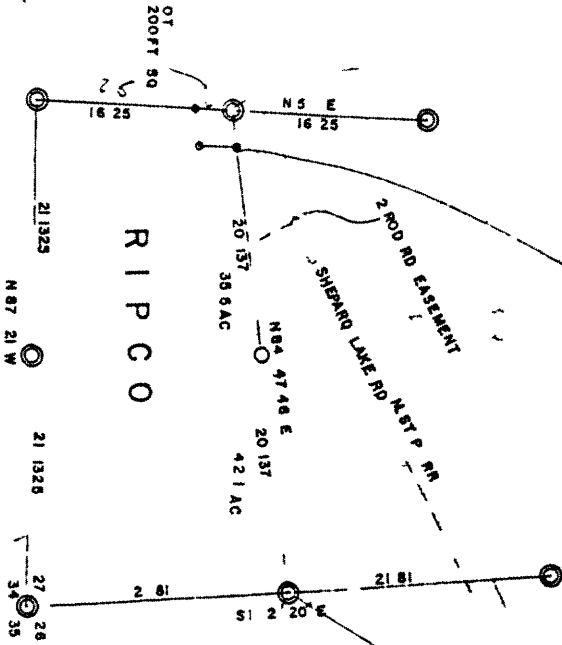
N 216,290 75
 8 - 181,533 28

N 2164 125 25
 8 101,782 51

N 2164 125 75
 8 = 11,971 75

N 2164 325
 8 = 101,999.89
 N 2164 537 5
 8 = 181,533 66

N 2164 7730
 8 = 181,222 84



RESURVEY OF SEC 27 T37N R10E

ONEIDA COUNTY WYO

Centers established by this survey
 either a capped corner,
 or by other means.

SCALE 1 inch = 100 feet

RHINFLANDER PAPER COMPANY
 DIVISION OF SHERIDAN SURVEYING

11332