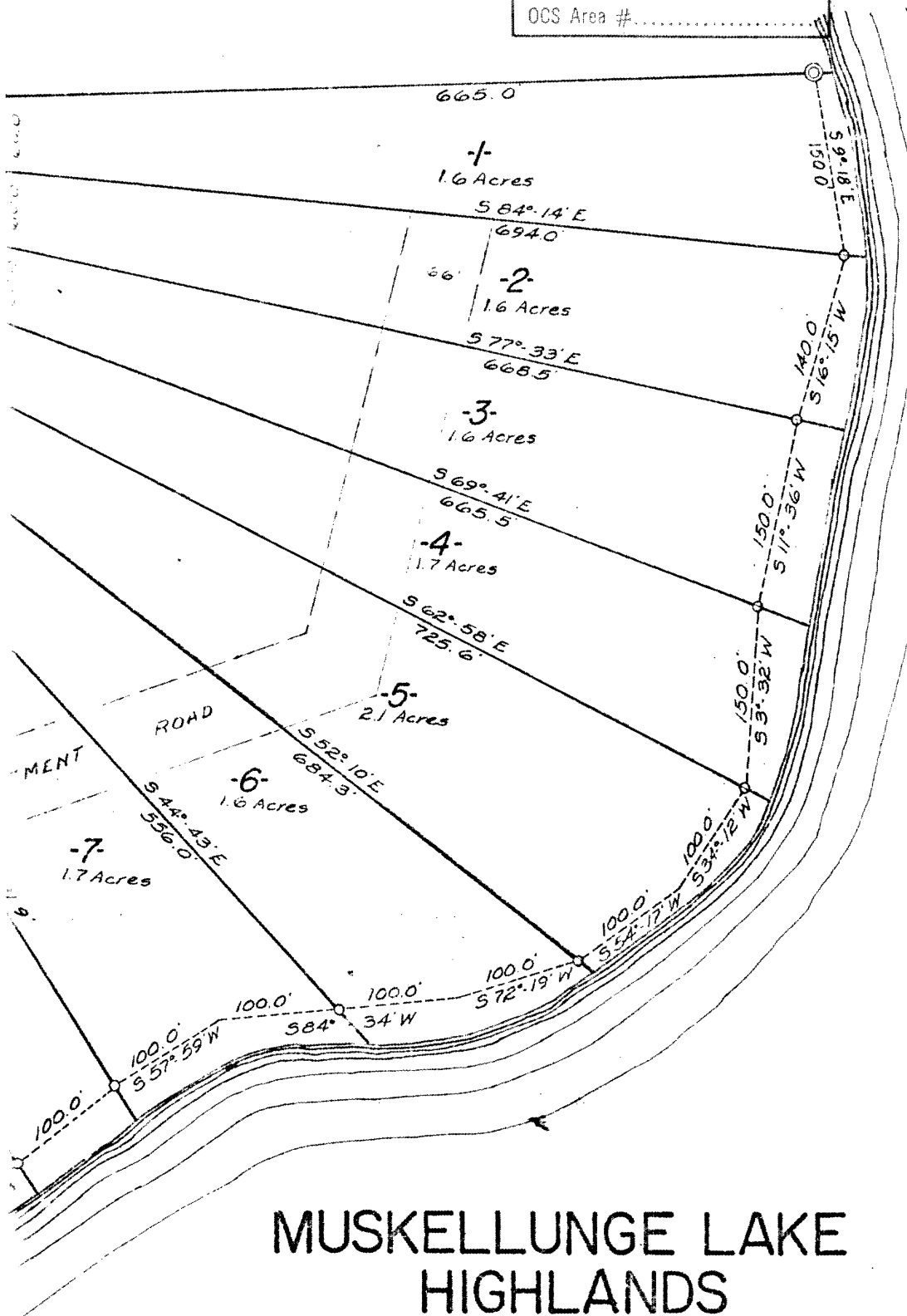


RECEIVED & FILED # **L135**  
 Oneida County Surveyor's Office  
 Date **FEB 11 1988**  
 By **M J H**  
 OCS Area # .....

*Meander Corner*  
 12" Maple  
 S 88° E, 1.4'  
 11" W. Pine  
 S 17° E, 5.6'



**MUSKELLUNGE LAKE  
 HIGHLANDS**

Part of  
**GOV'T. LOT 6  
 SECTION 10  
 T 38 N, R 8 E**  
 Oneida County, Wis.

RECEIVED & FILED **12078**  
 Oneida County Surveyor's Office  
 Date **13 Dec 1977**  
 By **D M W**  
 OCS Area # **344-10 388**

N 88°-25' E 2668.1'  
1181.8'

-22-  
10.2 Acres

gate

N 24°-33' W  
144.6'

66'

EASEMENT  
614.9'  
N 31°-18' W  
ROAD

66'

N 24°-10' W  
51.9'

110.0'

111.8'

161.0'

50.0'

70.0'

555°-30' W  
110.0'

550.0'

110.0'

S 36°-40' E  
100.0'

S 47°-42' W  
183.4'

692.6'

397.0'

609.4'  
553°-01' W  
770.4'

S 52°-41' W  
877.3'

S 50°-57' W  
848.0'

S 76°-00' W  
200.0'

S 84.2'

200.0'

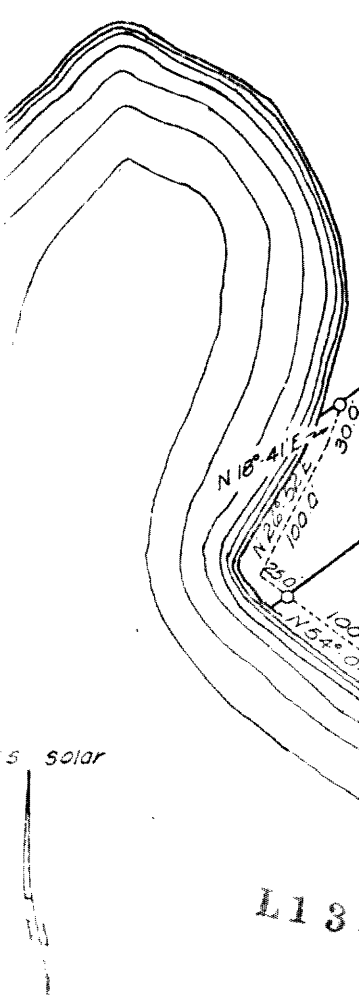
S 4°-51' E  
20.0'

20.0'

30.0'

-13-  
1.6 Acres

S 52°-31' E  
288.6'



N 18°-41' E  
300.0'

N 26°-32' E  
100.0'

N 26°-32' E  
100.0'

N 54°-04' W  
100.0'

N 54°-04' W  
100.0'

N 54°-04' W  
100.0'

N 54°-04' W  
150.0'

-21-  
1.6 Acres

-20-  
1.7 Acres

-19-  
1.6 Acres

-18-  
0.7 Acres

-17-  
0.7 Acres

-16-  
1.0 Acres

-15-  
1.0 Acres

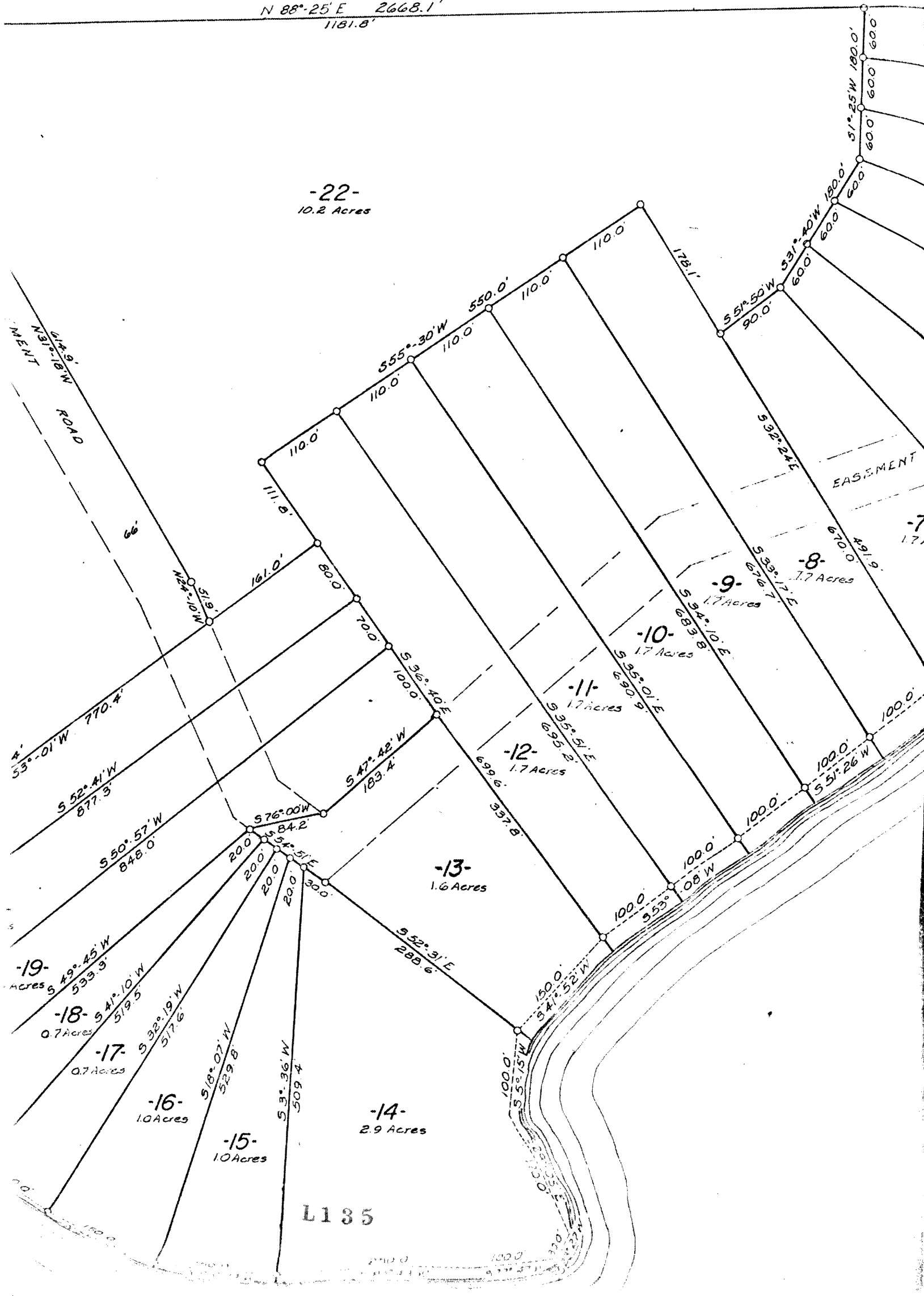
-14-  
2.9 Acres

55 solar

L135

N 88°-25' E 2668.1'  
1181.8'

-22-  
10.2 Acres



WILSON ROAD

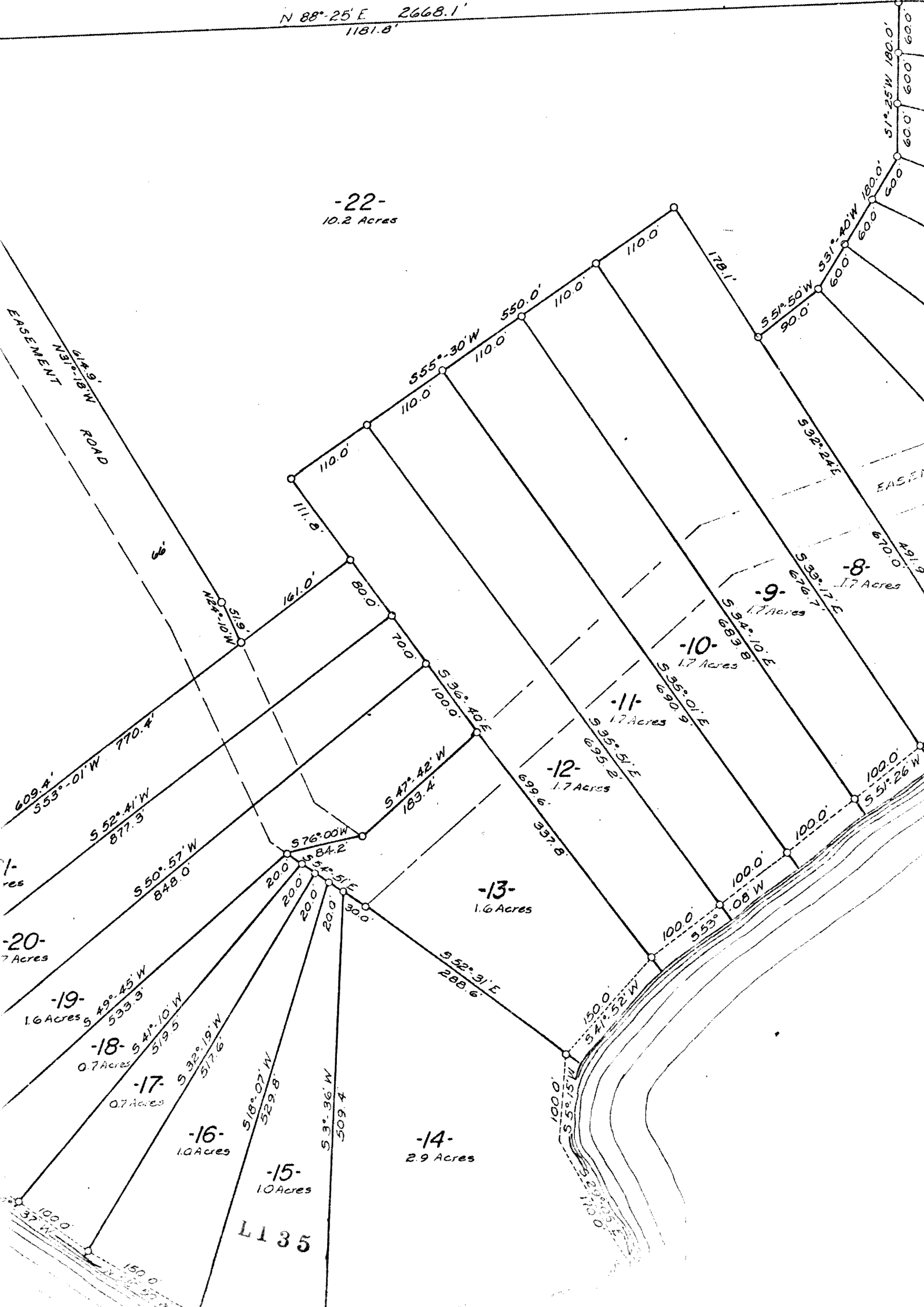
EASEMENT

L185

N 88°-25' E 2668.1'  
1181.8'

-22-  
10.2 Acres

EASEMENT  
614.9'  
N 57°-18' W  
ROAD



EASEM

L 135

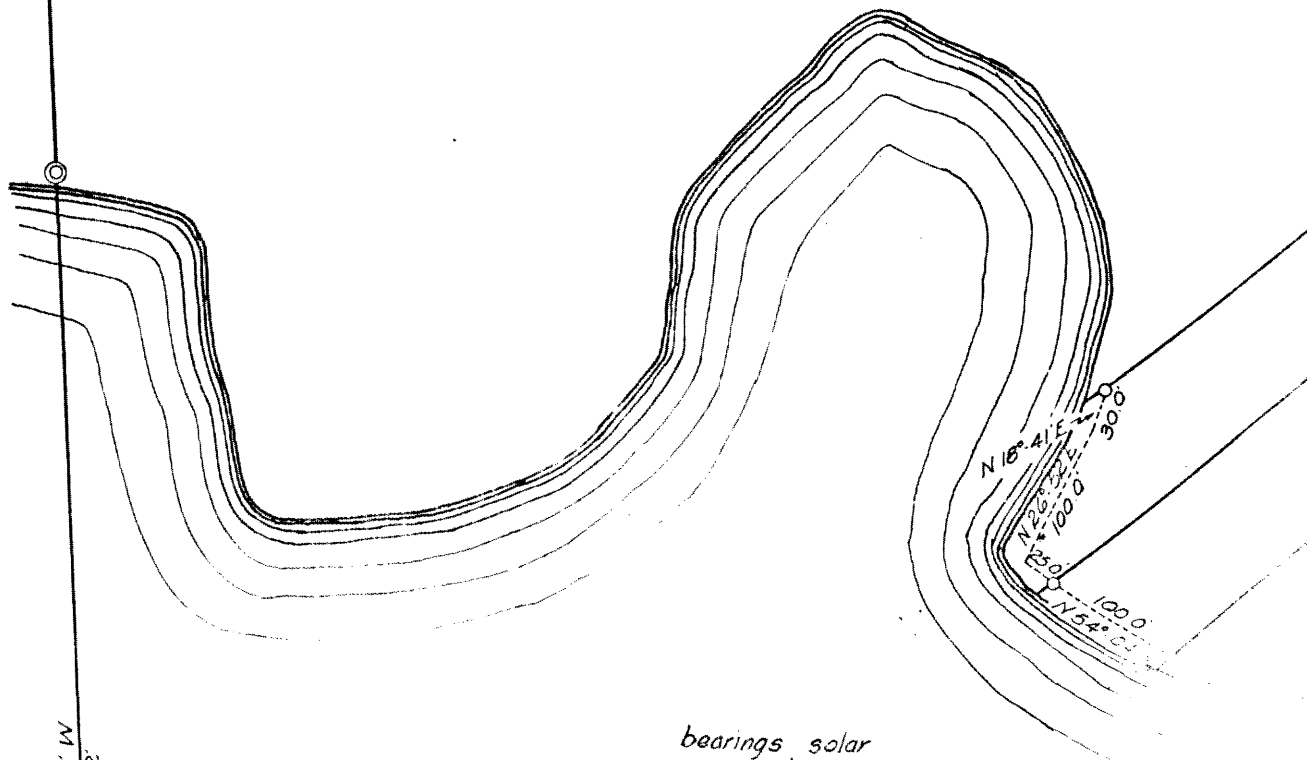
W. C. D. Brass Cap  
5" Oak  
S 66° W, 26.5'



821.3'

N 1°-08' W  
894.4'

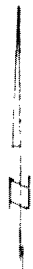
Meander Corner



N 1°-08' W  
1625.2'

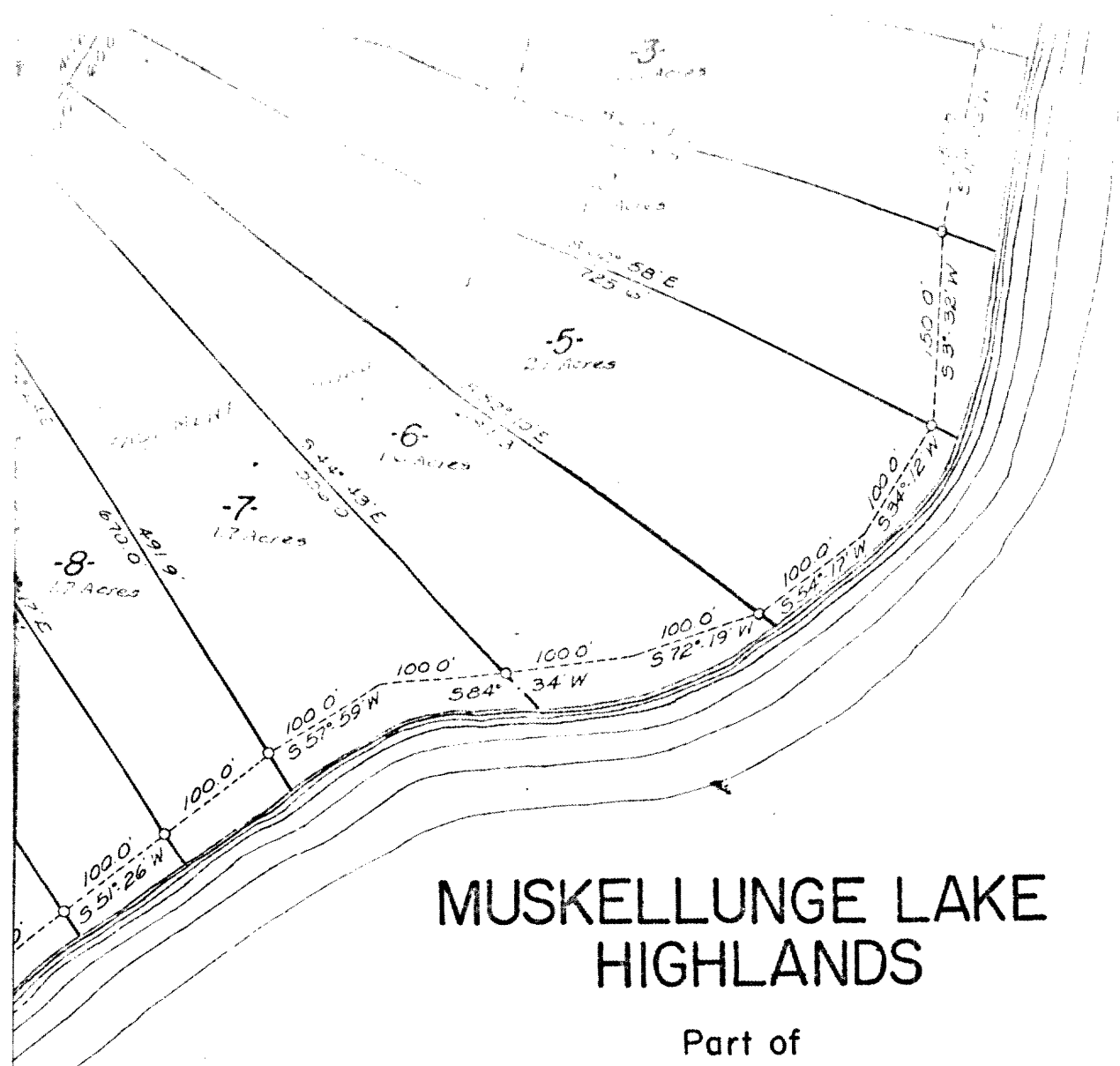
L135

bearings solar



547.0'  
N 23°-39' W  
148.4'

N 16°-41' E  
100.0'  
120.0'  
100.0'  
100.0'



# MUSKELLUNGE LAKE HIGHLANDS

Part of

## GOV'T. LOT 6 SECTION 10 T 38 N, R 8 E

Oneida County, Wis.



Scale 1" = 100'

July, 1966

Revised: May, 1967

Northwoods Surveyors

*[Signature]*  
Land Surveyor

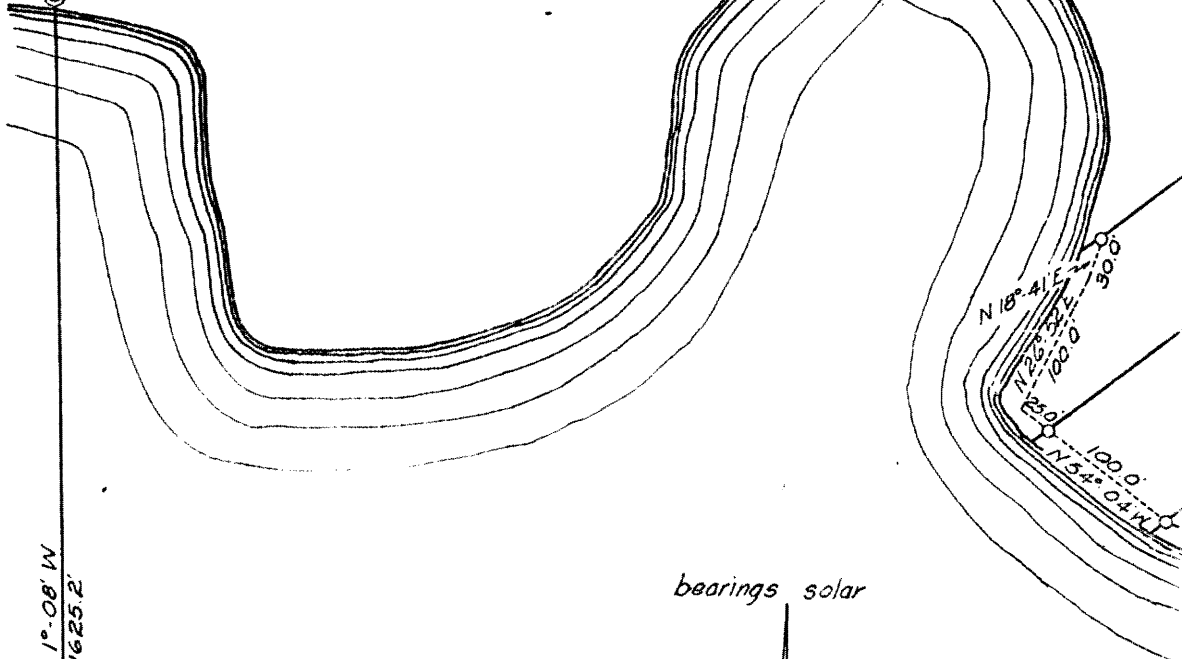
Revised May, 1974 (Added #2)

*[Signature]*  
Land Surveyor

L135.1

N 1°-08' W  
894.4'

Meander Corner



N 18°-4' E  
100.0'  
N 23°-3' E  
100.0'  
N 54°-0' E  
100.0'

N 1°-08' W  
1625.2'

bearings solar

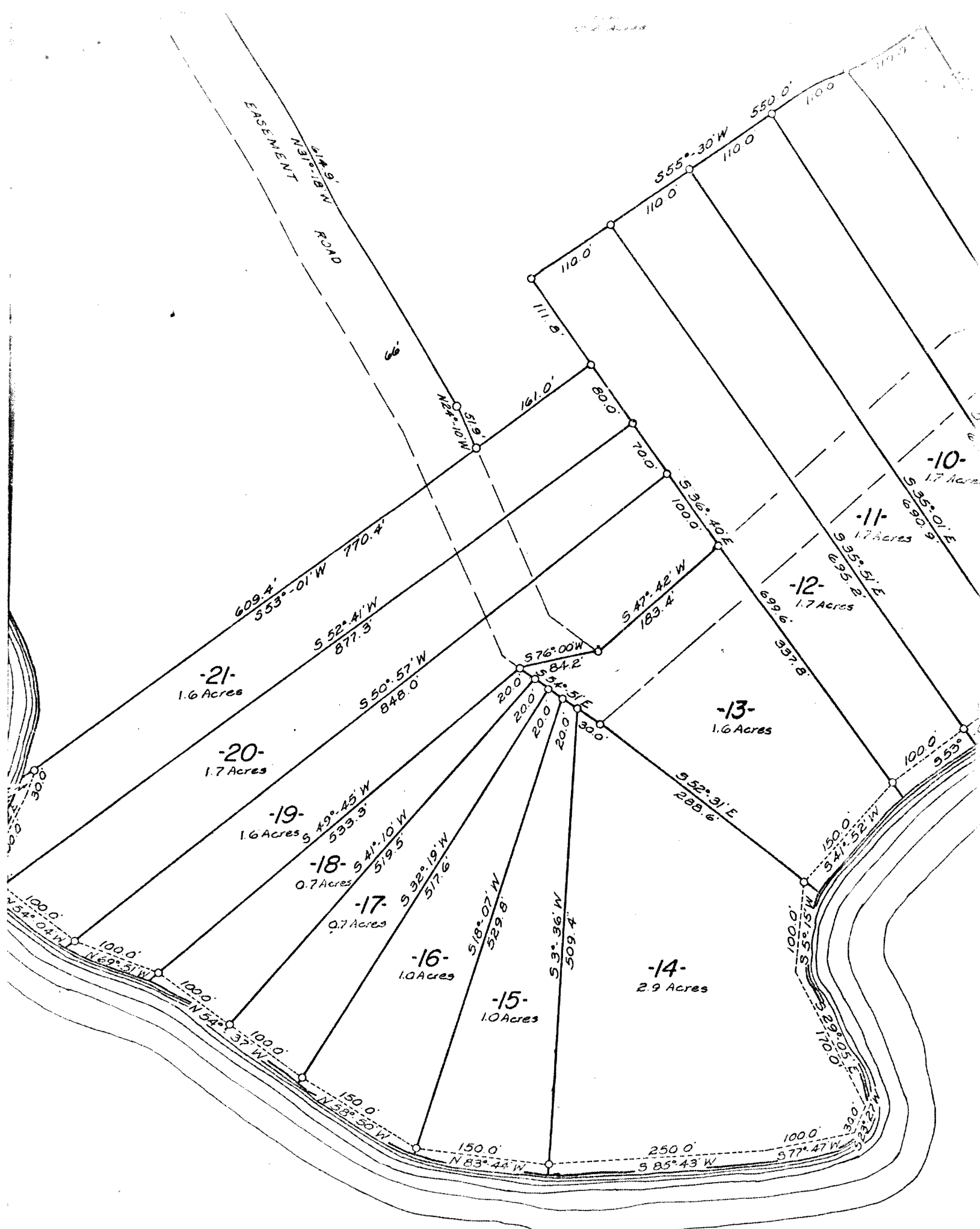


0-iron pipe

12" N. Pine  
S 60°E, 4.6'



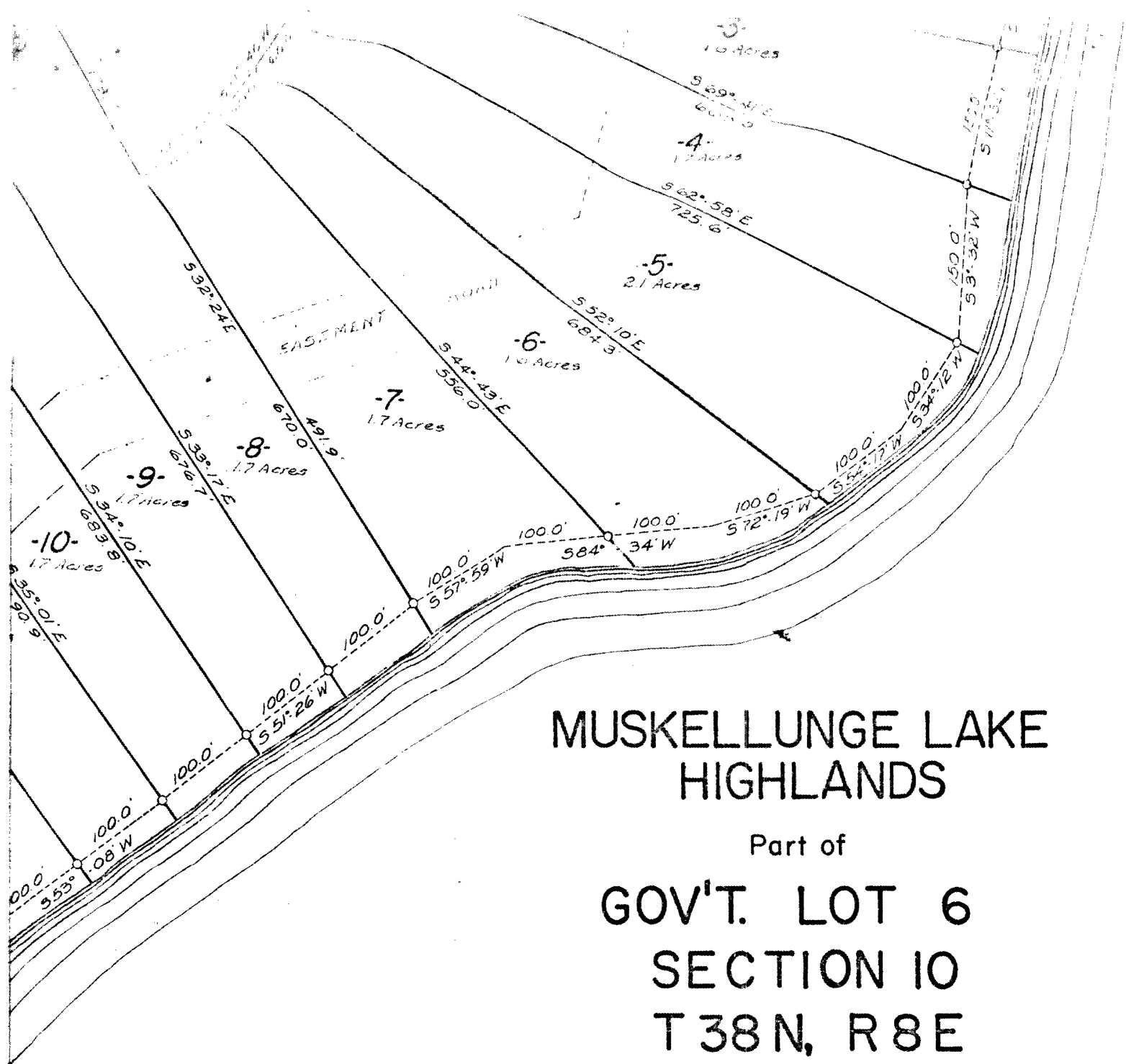
L135



MUSKELLUNGE LAKE

L135



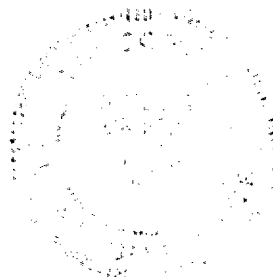


# MUSKELLUNGE LAKE HIGHLANDS

Part of

**GOV'T. LOT 6  
SECTION 10  
T 38 N, R 8 E**

Oneida County, Wis.



Scale 1" = 100'

July, 1966

Revised: May, 1967

Northwoods Surveyors

Revised

*[Signature]*  
Land Surveyor

L135