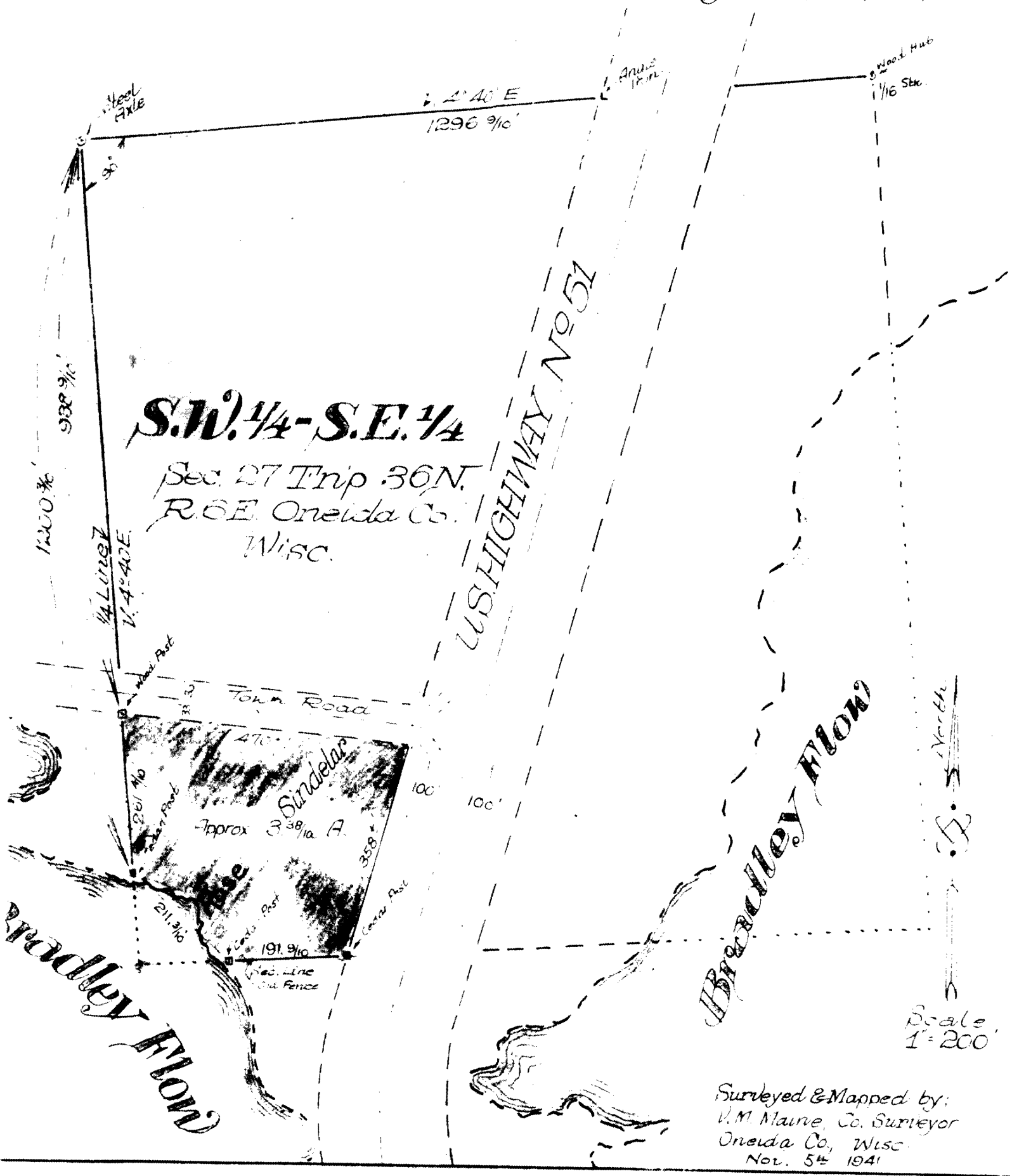


*Survey & Map of a parcel of land
in the southwesterly portion of the S.W. 1/4 -
S.E. 1/4 of Section 27 Township 36 North of
Range 6 East, Oneida County, Wisconsin*

L 1371



S.W. 1/4 - S.E. 1/4

Sec. 27 Twp 36N.
R. 6E. Oneida Co.
Wisc.

US HIGHWAY No 51

Bradley Flow

Bradley Flow

Scale
1" = 200'

Surveyed & Mapped by:
V.M. Maine, Co. Surveyor
Oneida Co., Wisc.
Nov. 5th 1941

MAP #	L 1371
DATE FILED	JAN 12 1945
BY	<i>JB</i>
DESCRIPTION FILED	
ONEIDA CO. SURVEYOR'S OFFICE	

L 1371