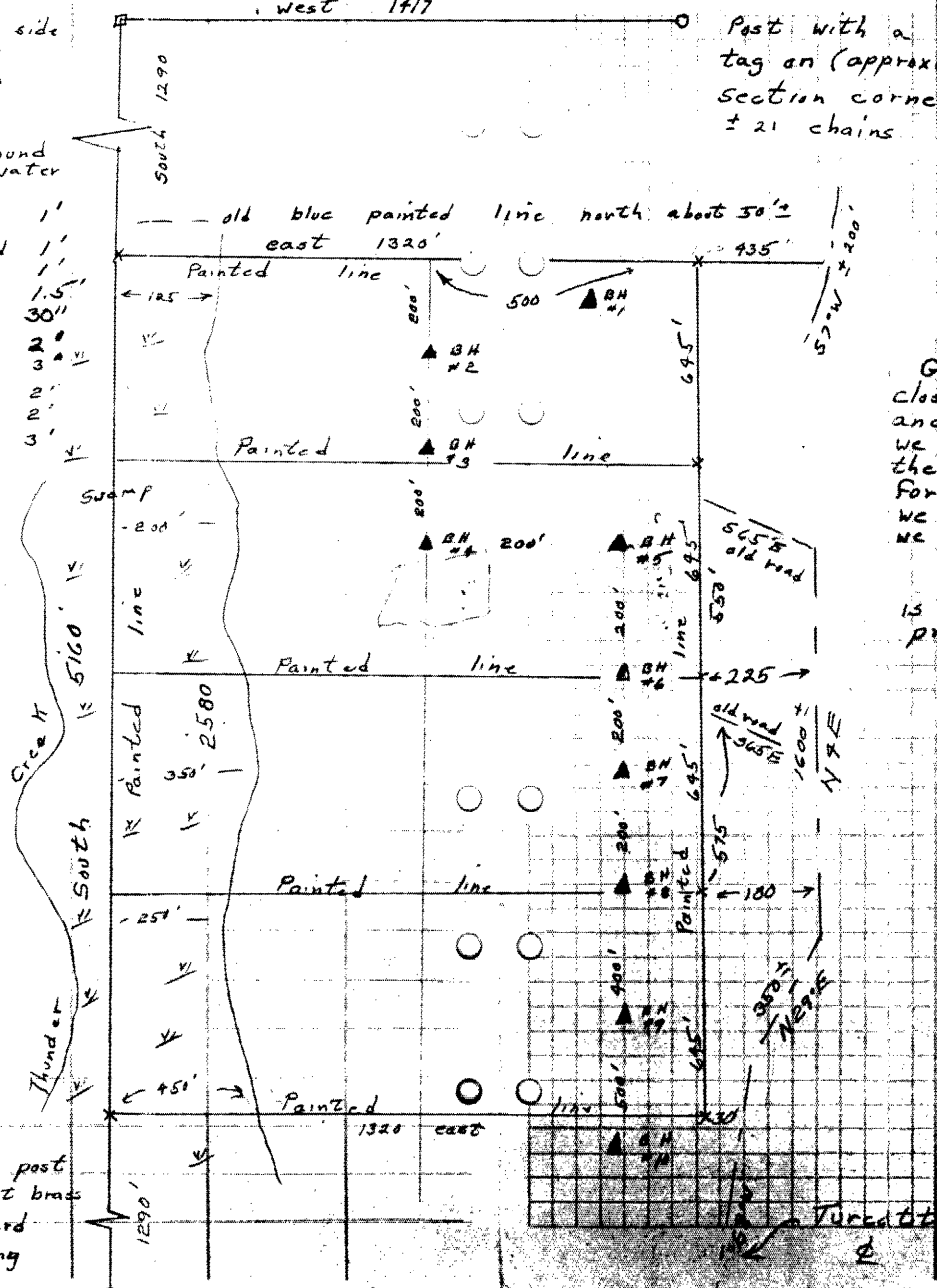


Found old Post $\frac{17}{19/20}$ Hand compass and ruff measured
 Scribed section west 1417'

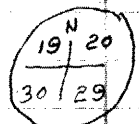
- 17 north side
- 18 west
- 19 south
- 20 east

Post with a tag on (approximate 1/8) section corner west ± 21 chains

Borehole #	top soil	rest	Ground Water
1	2" top	10" loamy sand	1'
2	2" top	10" loamy sand	1'
3	2" "	" "	1.5'
4	2" "	16" "	30"
5	2" "	20" "	2'
6	2" "	22" "	2'
7	2" "	24" "	3'
8	2" "	22" "	2'
9	2" "	22" "	2'
10	2" "	34" "	3'



(Note)
 Ground water very close to surface and the farther west we go the closer to the surface. Very poor for loting. The deeper we dig the more water we get.
 It looks like road is along east line of property.



Found Brass cap. & old post Laying on ground. Reset brass cap. Old post was square but could not see any Scribing No Bts

MAP #	L1375
DATE FILED	MAR 01 1995
BY	JB
DESCRIPTION FILED	
ONEIDA CO. SURVEYOR'S OFFICE	

Turkey Road

$$\begin{array}{r} 645 \\ 9) 2580 \\ \underline{27} \\ 18 \\ \underline{18} \\ 0 \end{array}$$

Section 20
T37 N R4E

May 9, 1972
P.C. 260

M-Mullen
Gieseler

Searched for and found NW section then
 hand compassed and measured south and west
 to get approximate north line of property.
 Then took bearing. Ground water very close
 to surface.

May 23, 1972
clear 280

M-Mullen
Gieseler

Hand compassed and measured south
 to scratch for W 1/4 but could not find
 so continued south searched for SW section
 corner and found after a long search.
 Distance is a little short taped line
 around the 40's first

May 29, 1972
clear 380

M-Mullen
Gieseler

Painted lines