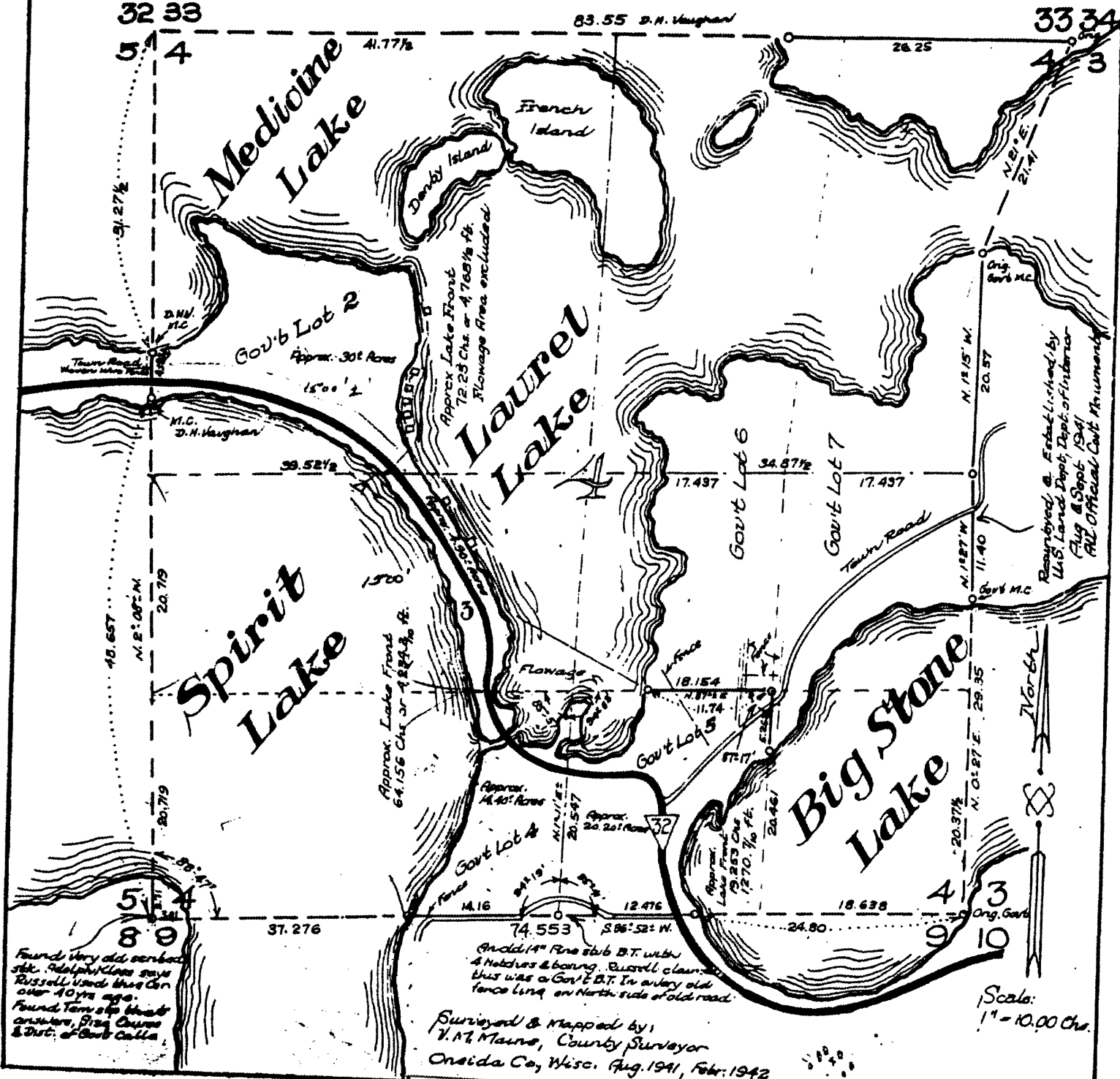


L1474

Survey and Map of Gov't Lots 2, 3, 4, 5 Section 4 Township 38 North Range 11 East Oneida Co., Wisc. Three Lakes Rod & Gun Club



Found very old scabbed
 sh. Reddish Glass says
 Russell used this Cor
 over 40 yrs ago.
 Found Tom's to be
 answers, Big Course
 & Dist. of Gov't Calla

And old 14" Pine stub B.T. with
 4 notches & bearing. Russell claim
 this was a Gov't B.T. In a very old
 fence line on North side of old road.

Surveyed & Mapped by
 V.A. Maine, County Surveyor
 Oneida Co., Wisc. Aug. 1941, Feb. 1942

Revised by
 U.S. Land Dept, Dept. of Interior
 Aug. & Sept. 1941
 All Official Gov't Measurements

10 9 10 2280
 4920 1/2
 at rear 2000 2 1/2

MAP L1474

DATE FILED JAN 20 1997

BY JB

DESCRIPTION FILED

ONEIDA CO. SURVEYOR'S OFFICE

1000 35
 1" = 10 ch