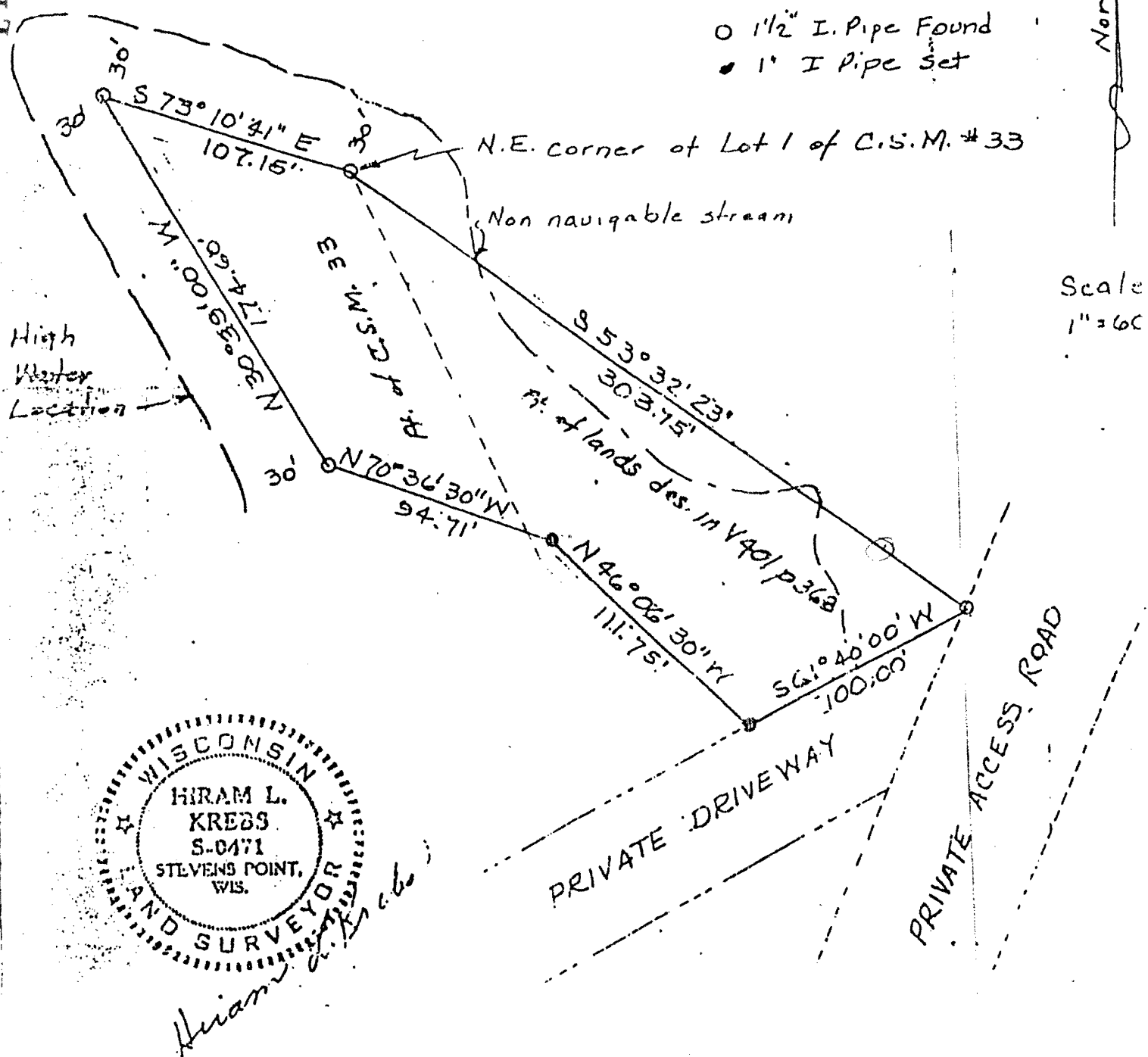


L1475

LAKE NOKOMIS

North



SURVEY OF PART OF C. S. M. #33 AND PART
 OF LANDS DESCRIBED IN V 401 P. 368 IN GOV. Lc
 3 OF SEC. 26, TOWNSHIP 36 NORTH, RANGE 6 EAST,
 TOWN OF NOKOMIS, ONEIDA COUNTY, WI. FRZ. W. MENZEL

L1475