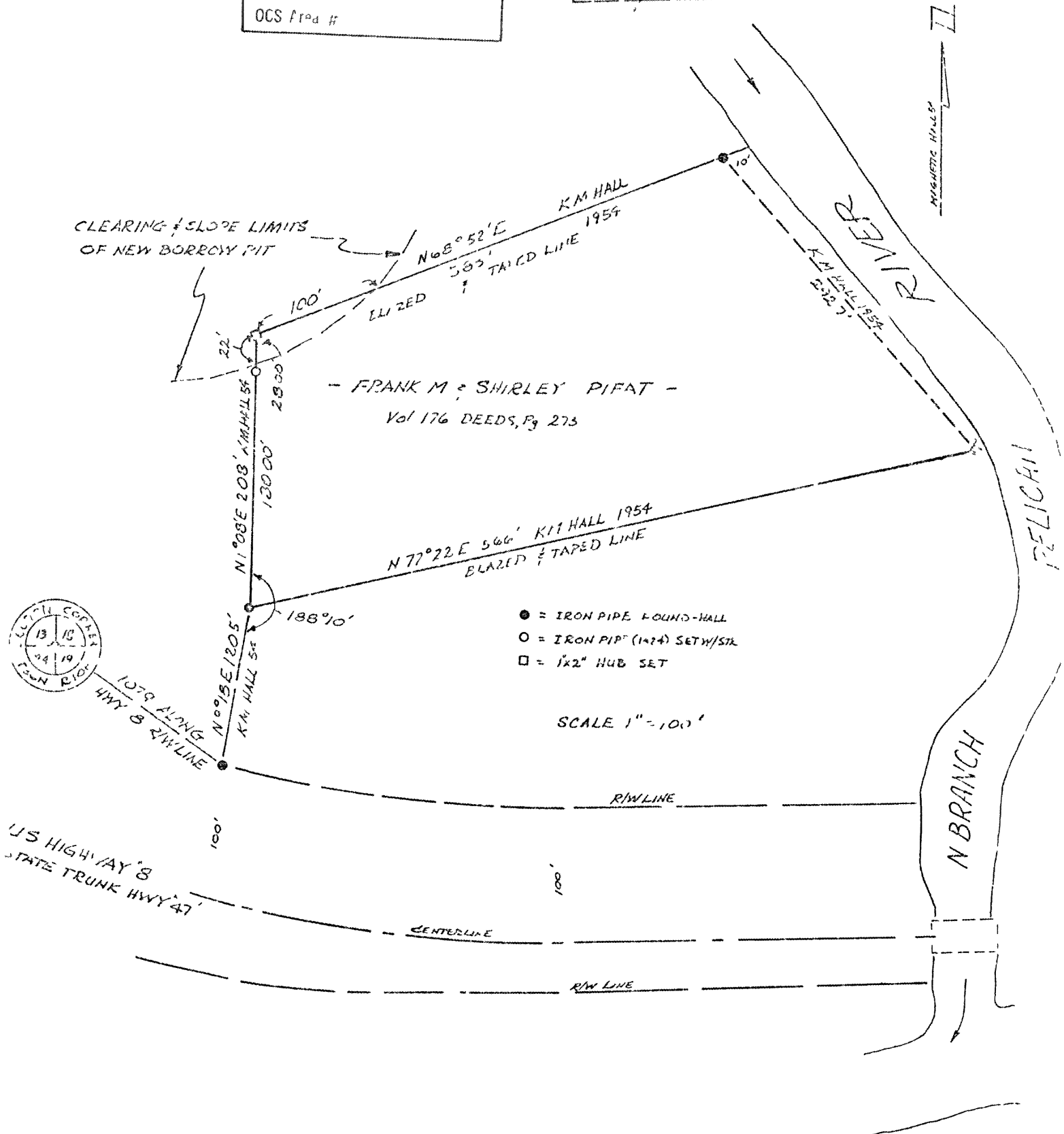


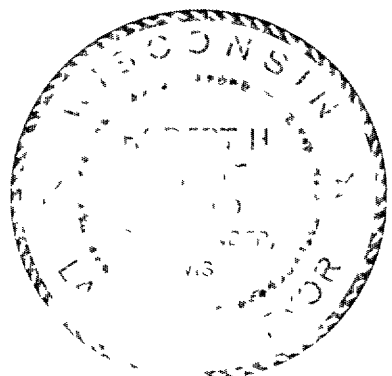
RECEIVED & FILED J. 149  
 DEPT. OF SURVEYING - CIVIL  
 DATE FEB 11 1988  
 BY M JH  
 OCS Prod #

~~L2018~~  
 31 Aug 77  
 D M Winat  
 4-19-36-10



ROBINSON & ASSOC. INC.  
 ENGINEERS ARCHITECTS SURVEYORS

A part of Gov't. Lot 2,  
 Section 19, T 36 N, R 10,  
 Town of Pelican, Oneida Co.,  
 Wisconsin, as surveyed by  
 K.M. Hall in 1954. Reference  
 from 11's monumented corners  
 & line.



*Robert H. Winat*  
 Robert H. Winat, 1043  
 8 July 1977

L149