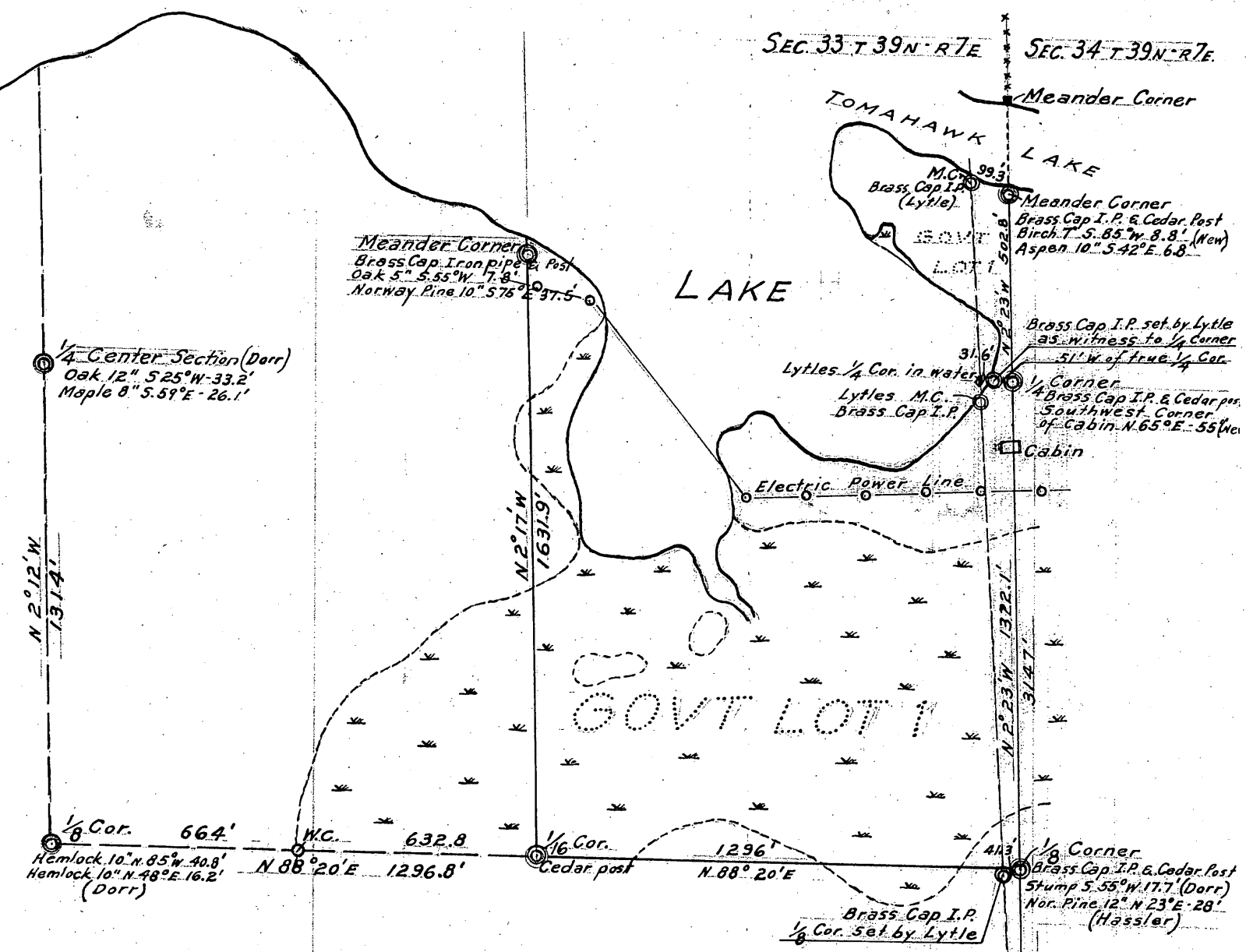


L1494

# TOMAHAWK

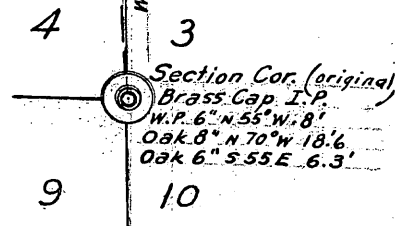


GOVT LOT 1  
SECTION 4, T 38 N - R 7 E  
ONEIDA COUNTY, WIS.

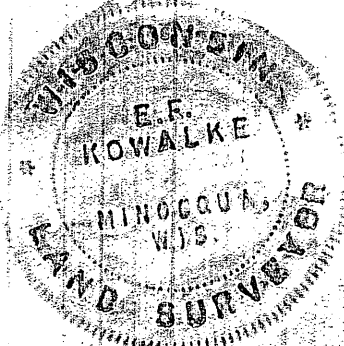
Scale : 1" = 400'

Revised April 8-1957

*E. F. Kowalke*  
Surveyor



MAP # L1494  
DATE FILED 4/7/97  
BY RA  
DESCRIPTION FILED  
ONEIDA CO. SURVEYOR'S OFFICE



4-38-7