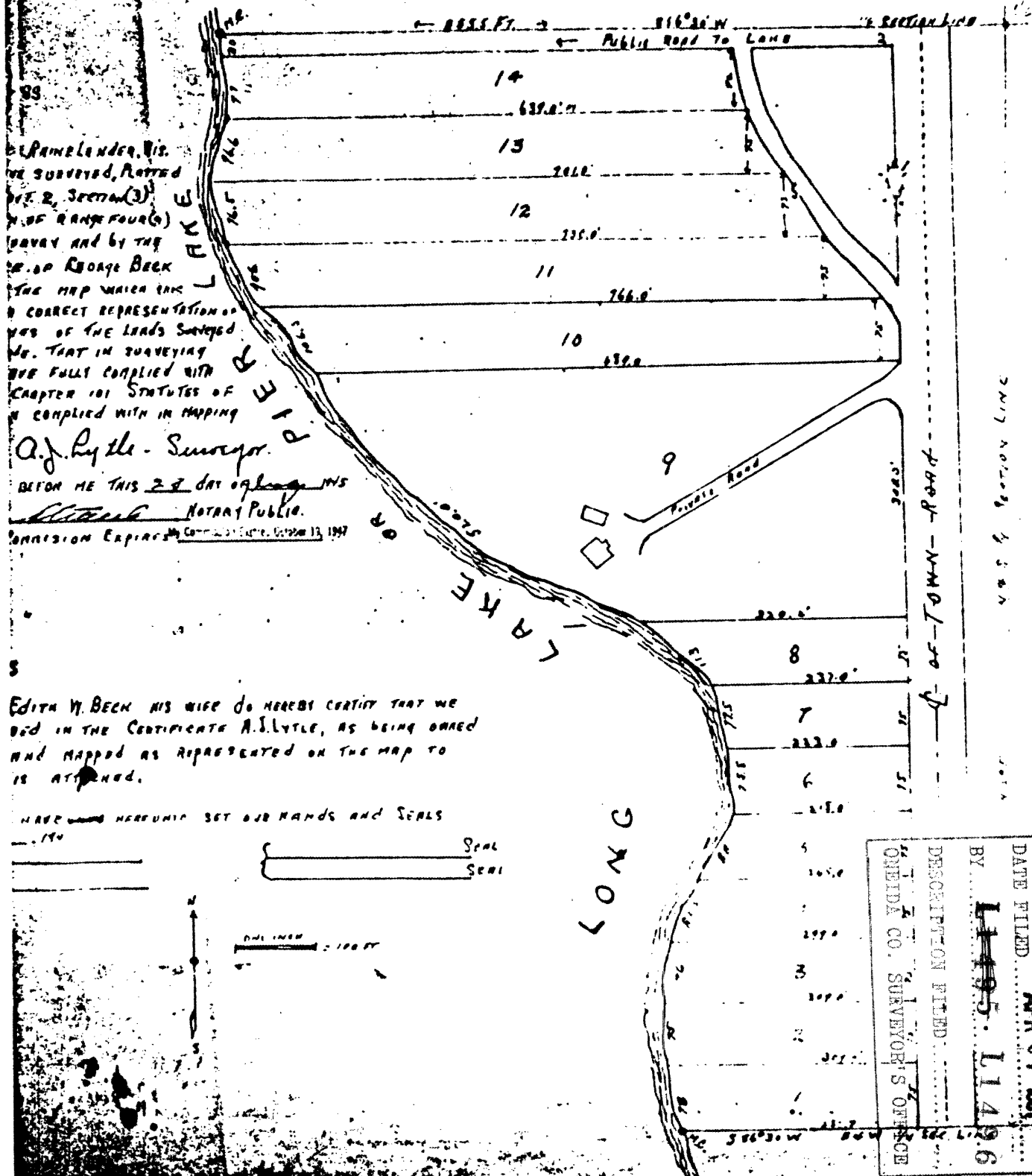


L1496
L1495

L1496
L1495

BECK'S SUB-DIVISION OF GOV'T. LOT, N^o 2. SEC. 3. T 37N 4E.

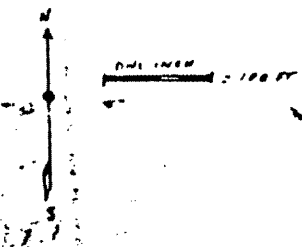


Edith W. Beck, Vis.
we surveyed, Platted
T. 37 N. Sec. 3, Range Four (4)
T. 37 N. R. 4 E. and by the
W. of George Beck
The map which is
a correct representation of
the lands surveyed
and that in surveying
we fully complied with
Chapter 101 Statutes of
the Territory of Idaho
A. J. Lytle - Surveyor.
BEFORE ME THIS 27 DAY OF APRIL 1937
Notary Public.
Commission Expires October 13, 1937

Edith W. Beck and her wife do hereby certify that we
did in the Certificate A. J. Lytle, as being owned
and mapped as represented on the map to
is attached.

HAVE HEREON SET OUR HANDS AND SEALS

Seal
Seal



MAP # _____
DATE FILED APR 07 1937
BY L1495 - L1496
DESCRIPTION FILED
T. 37 N. SEC. 3. RANGE FOUR (4)
OREIDA CO. SUREVEYOR'S OFFICE

L1496
L1495