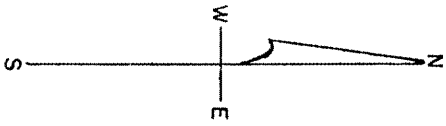


1150  
 FEB 11 1988  
 MSH



ALL BEARINGS ARE REFERENCED TO THE  
 WEST LINE OF THE NW 1/4 OF SEC 30  
 ALL BEARINGS ARE ASSUMED

PART OF SW 1/4, NW 1/4,  
 SEC. 30, T.36N, R.11E  
 TOWN OF MONICO  
 ONEIDA COUNTY, WISCONSIN

SURVEY FOR  
 BUD ISON

SCALE - 1" = 100'

LEGEND

- ⊙ SUBDIVISIONAL MON & BEARING MON & TREE
- 1" x 24" IRON PIPE SET
- TACK IN BLACKTOP SET
- IRON RAIL SPIKE SET

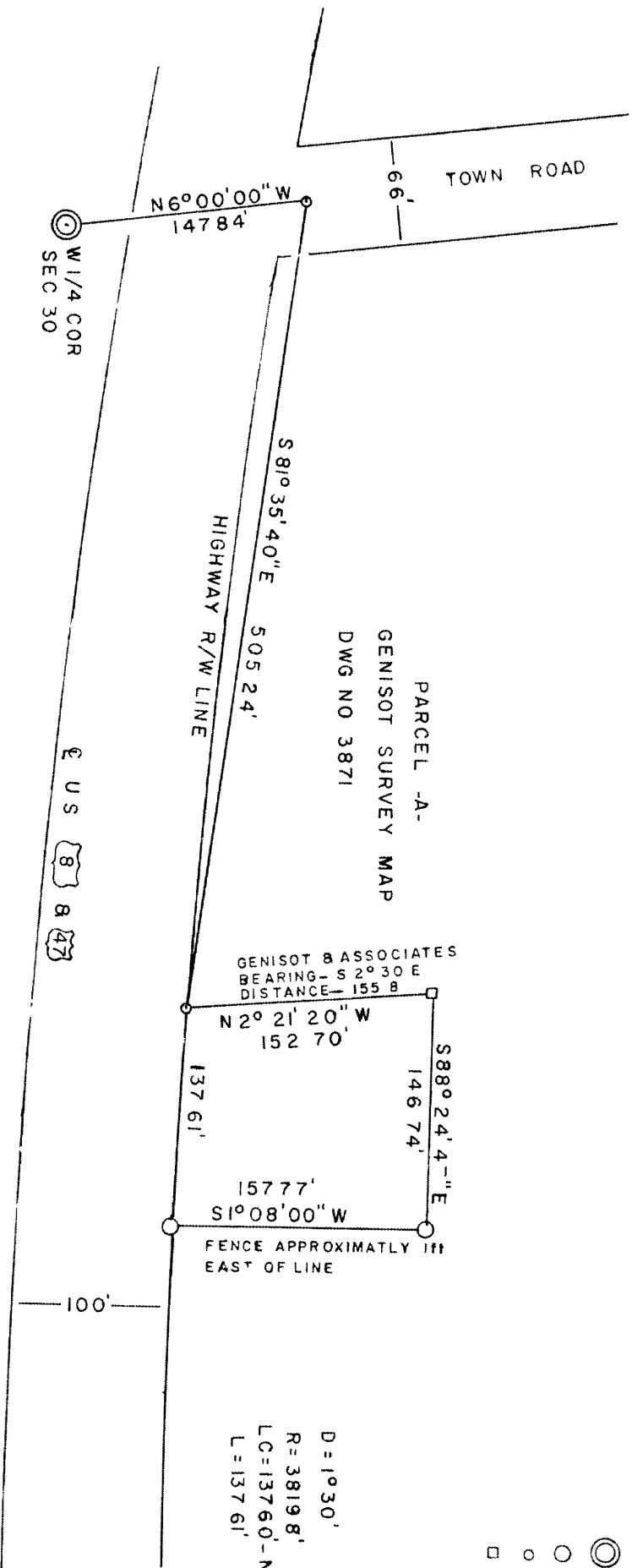
6/22/77

DR BY, T LOFTUS

D = 1030'  
 R = 3819.8'  
 LC = 13760' - N86° 09' 10" W  
 L = 13761'

SURVEY CONFORMS TO DEED  
 FOUND IN VOL 299, PG 461

23 Aug 77  
 By DM Loftus  
 USS ARCA 45-30-36-11



1150