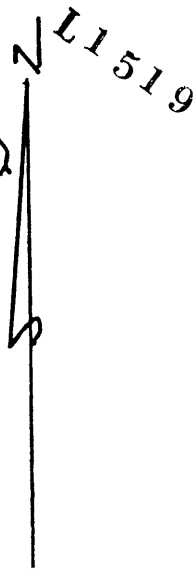
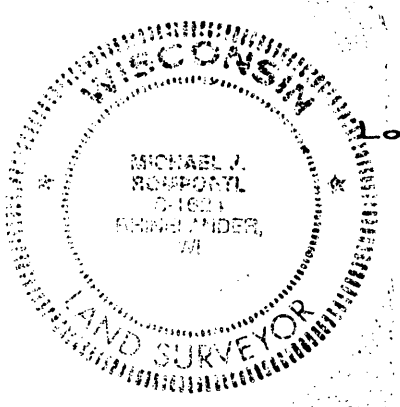
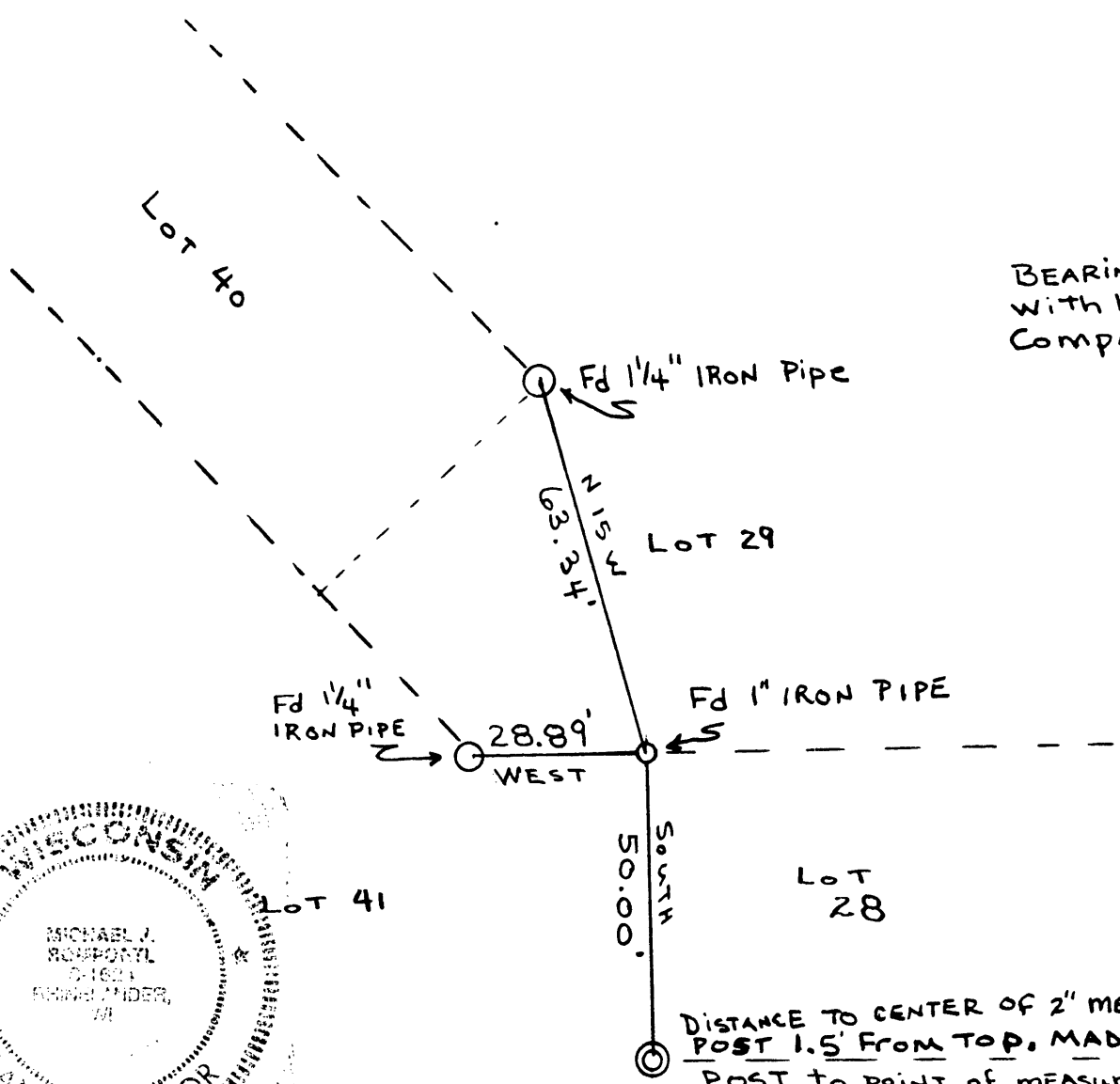


L1519

TIE FOR NORTHWEST CORNER LOT 28 BLOCK 7 OF BRUCKNER'S REPLAT OF ASSESSOR'S REPLAT OF BLOCK 7, TOWN SITE OF PELICAN. (CORNER BEING TIED OUT IN ADVANCE OF EXCAVATION) LOCATED IN SEC 32-37-09



BEARINGS TAKEN WITH HANDHELD COMPASS



DISTANCE TO CENTER OF 2" METAL FENCE POST 1.5' FROM TOP, MADE SCRATCH IN POST TO POINT OF MEASUREMENT (↓). POST STANDS 5' HIGH. THIS IS ONLY A TIE AND MAY NOT BE THE PROPERTY CORNER.

NOTE THESE CORNERS SHOULD BE FIELD TESTED AGAINST OTHER MONUMENTS TO VERIFY ITS LOCATION BEFORE USING IN A SURVEY. THE PURPOSE OF THIS TIE WAS TO PRESERVE ITS LOCATION PRIOR TO EXCAVATION ACTIVITIES.

I hereby certify that I have made The above ties AND THE MEASUREMENTS Taken are correct to the best of knowledge AND BELIEF.

Michael J Rompault
S 1624
June 5, 1995

L1519

L1519