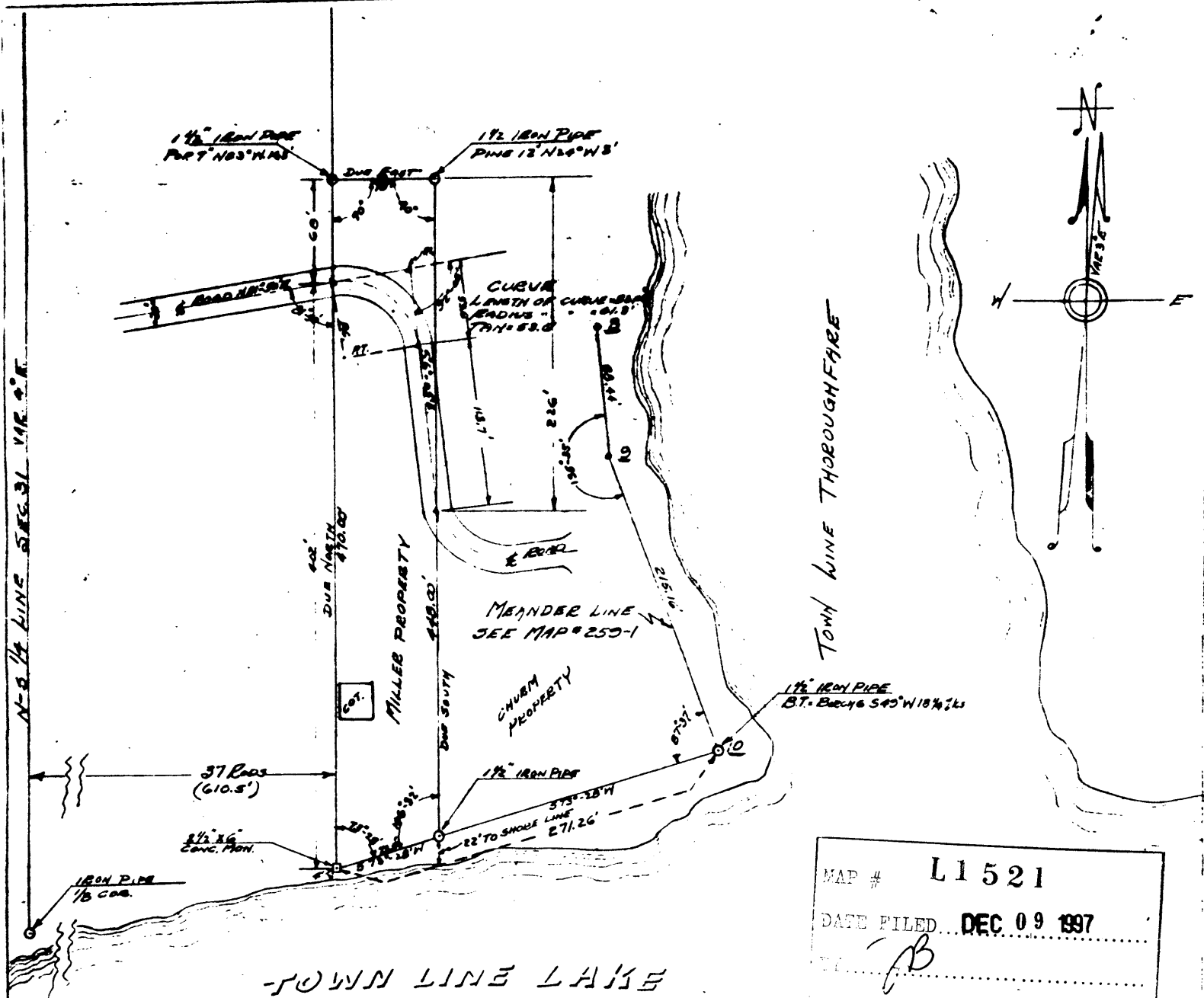


L1521

V190-292
DEPS

L1521



TOWN LINE LAKE

SURVEYOR'S CERTIFICATE

THIS IS TO CERTIFY THAT WE HAVE SURVEYED A PARCEL OF LAND IN ONEIDA COUNTY AND MORE PARTICULARLY DESCRIBED AS FOLLOWS: - BEGINNING AT A 2 1/2 INCH BY 6 INCH LONG PICH, SITUATED 610.5' EAST OF THE N-S 1/4 LINE SEC. 31 T33N R11E, AND ON THE NORTH SHORE OF TOWN LINE LAKE, THENCE DUE NORTH A DISTANCE OF 470 FEET, THENCE DUE EAST A DISTANCE OF 70 FEET, THENCE DUE SOUTH 448', THENCE S. 73° W 28' W A DISTANCE OF 13.6 FEET TO THE PLACE OF BEGINNING WE FURTHER CERTIFY THAT THIS PLAT IS A TRUE & CORRECT REPRESENTATION OF THE LANDS SO SURVEYED BY US.

GENISOT ENGINEERING CO.
 DEPUTY COUNTY SURVEYOR
 ONEIDA COUNTY, N.Y.

MAP # L1521
 DATE FILED DEC 09 1897
 DESCRIPTION FILED
 ONEIDA CO. SURVEYOR'S OFFICE



SURVEY FOR
 JAMES CHURM
 PAR. 1, 1907, ACCT. 7
 SEC. 31, T33N R11E
 ONEIDA COUNTY, N.Y.
 GENISOT ENGINEERING CO.
 ENGINEER
 SCALE 1 INCH = 50 FEET
 DWG. NO. 250-2 DATE AUG 17, 1947