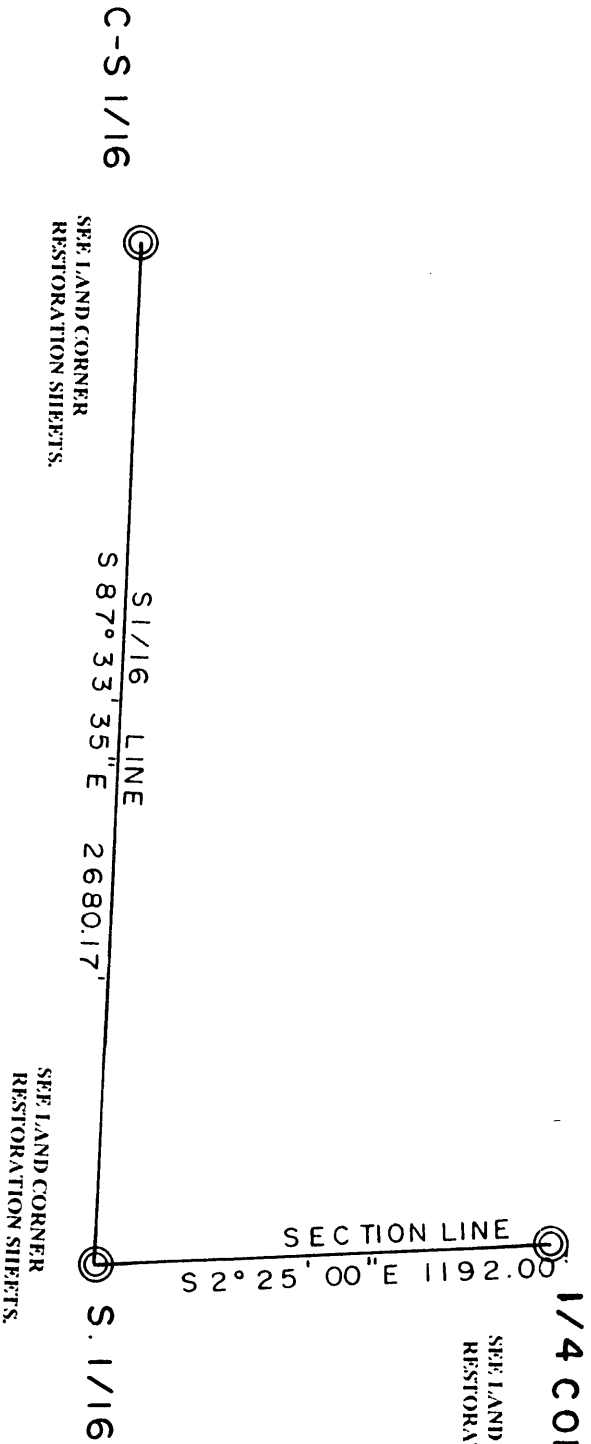
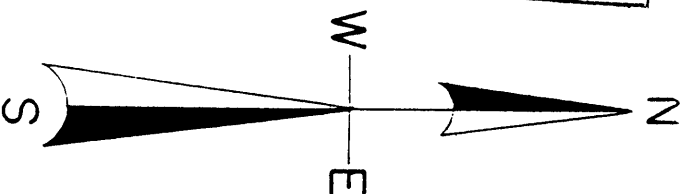


# S. 1/16 LINE OF THE SE. 1/4, S. 31, T. 38 N., R. 10 E., ONEIDA COUNTY, WI.

MAP #	L1529
DATE FILED	FEB 04 1998
BY	.....
DESCRIPTION FILED	.....
ONEIDA CO. SURVEYOR'S OFFICE	.....



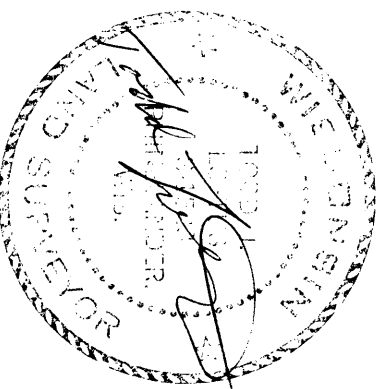
1/4 COR.

SEE LAND CORNER RESTORATION SHEETS.

SURVEY FOR J. HEIN

1" = 500'

NORTH IS REFERENCED TO THE EAST LINE SE 1/4 BEING A BEARING OF S 2 25 ' 00" E.



12/15/97