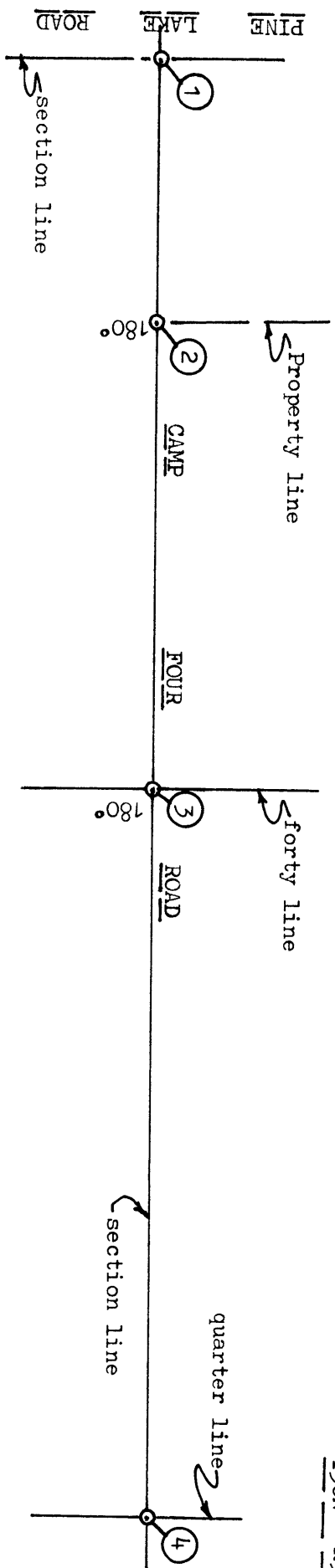


SWSW

SESW

Section 10
T38N R9E



NWNW

NENW

Section 15
T38N R9E

Reference: Plat of Survey by Norman Loftus
No. B-240, Oneida County records.



Scale: 1" = 300'

TABLE OF MONUMENTS:

- 1 1 1/2" dia. iron pipe found at Section Corner per USPLS Monument Record filed in Oneida County records.
- 2 1/4" dia. by 2 1/2" long PK nail set with 1 1/4" dia. steel washer in existing blacktop pavement.
- 3 1/4" dia. by 2 1/2" long PK nail set with 1 1/4" dia. steel washer at forty corner in existing blacktop pavement.
- 4 1" dia. iron shaft found at Quarter Corner per USPLS Monument Record filed in Oneida County records.

TABLE OF DISTANCES:

1 to 2	499.69'
2 to 3	869.66'
1 to 3	1369.35'
3 to 4	1369.35'



Note: Alignment on section line and all distances measured with Topcon ET1 Total Station instrument.

Note: A temporary point was set with a PK nail on the section line 20.25' West of forty corner at 3.

Certified correct this 14th day of April, 1998.

Signed: *William C. Rohde*

William C. Rohde, RLS 841