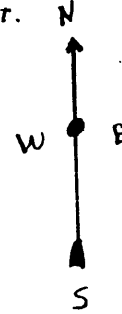


SECTION 5-T36-N-R9E.
SECTION -8-T36-N-R9E. Oneida County, Wis.

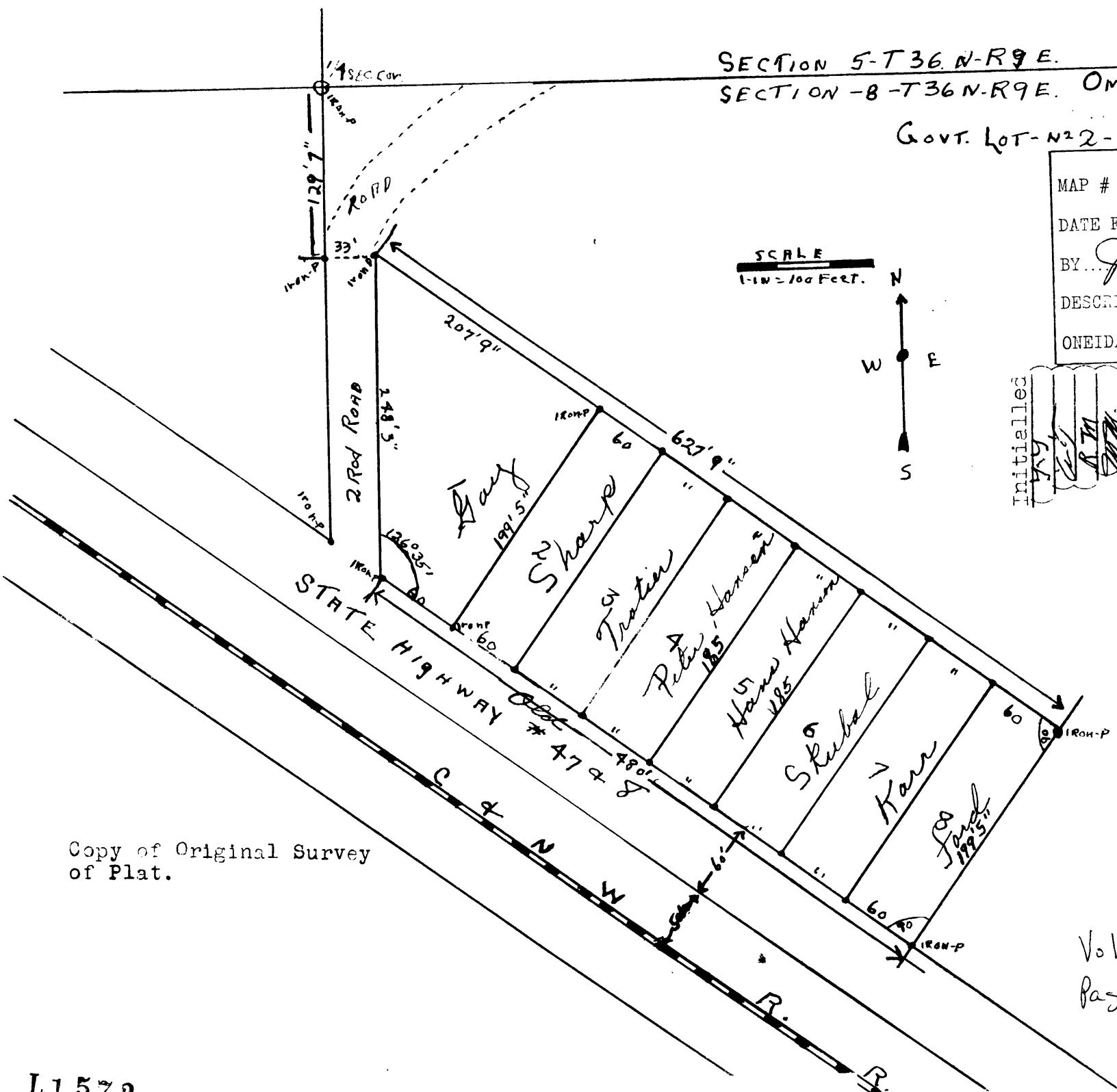
GOVT. LOT-N22-

MAP # L1572
DATE FILED AUG 03 1998
BY JB
DESCRIPTION FILED
ONEIDA CO. SURVEYOR'S OFFICE

SCALE
1-IN = 100 FEET.



Initialed
[Handwritten initials in a stamp]



Copy of Original Survey
of Plat.

Vol. 201 Deeds
Page 301

L1572