

PLAT OF Part of

5 1/2 of the NB 1/4

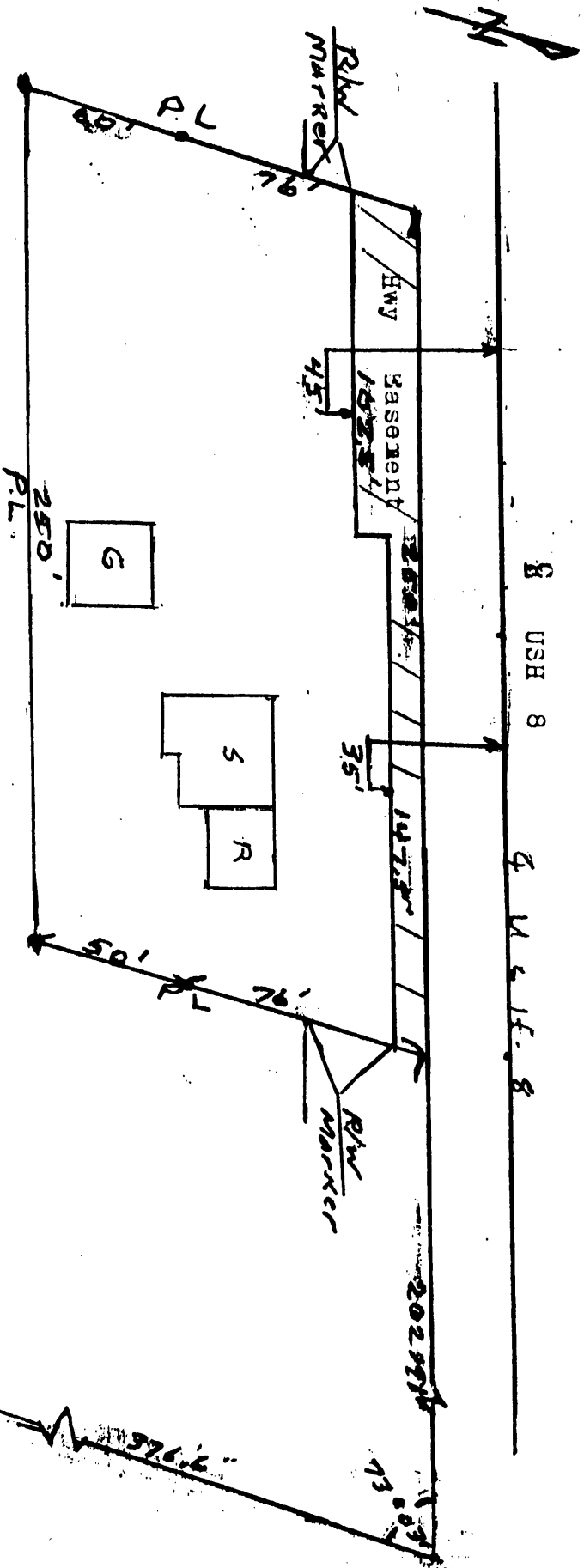
330 30 T 36 N R11E

Town of Monico

Oneida County

§ USH 8

Q M & L F. 8



I certify this plat to be a true copy of the lands described.

Louis A. Liatses  
Land Surveyor S 132

7-31-98

Scale



SB COR.  
S 1/4 NB 1/4

MAP #	L1579
DATE FILED	SEP 23 1998
BY	<i>JP</i>
DESCRIPTION	ONEIDA CO. SURVEYOR'S OFFICE