

MAP #	L1601
DATE FILED	JAN 15 1999
BY	DAP
DESCRIPTION FILED	
ONEIDA CO. SURVEYOR'S OFFICE	
Recorders Data	

LANDMARK MONUMENT PRESERVATION RECORD

LOCATION: Probable C1/4 corner, in existing blacktop roadway 'T' intersection.

FORTY/GOVT LOT: N/A SECTION: 29 TOWNSHIP 37 NORTH RANGE 7 EASTWEST

CITY/VILLAGE/TOWN OF: Cassian COUNTY OF: Oneida

Description of Landmark Monument and location history, if known:

Found an old rusted 3/4" dia. iron rod with upper 12" bent 45°+/- East about 4" below existing blacktop pavement surface in an older blacktop pavement underlayment. I left the old iron rod in place, and set a 3/4" dia. by 24" long iron pipe in center of soft rust stained cavity along lower West side of the old iron rod, with top about 1" below pavement surface. I filled small cavity chiseled thru blacktop with patching material obtained from Town of Cassian stockpile on Rocky Run Road East of USH 51.

No other metallic evidence was detected in roadway within 1/2 chain of this monument location. Corner monument falls 5 1/2' North and 7' West of blacktop centerlines juncture.

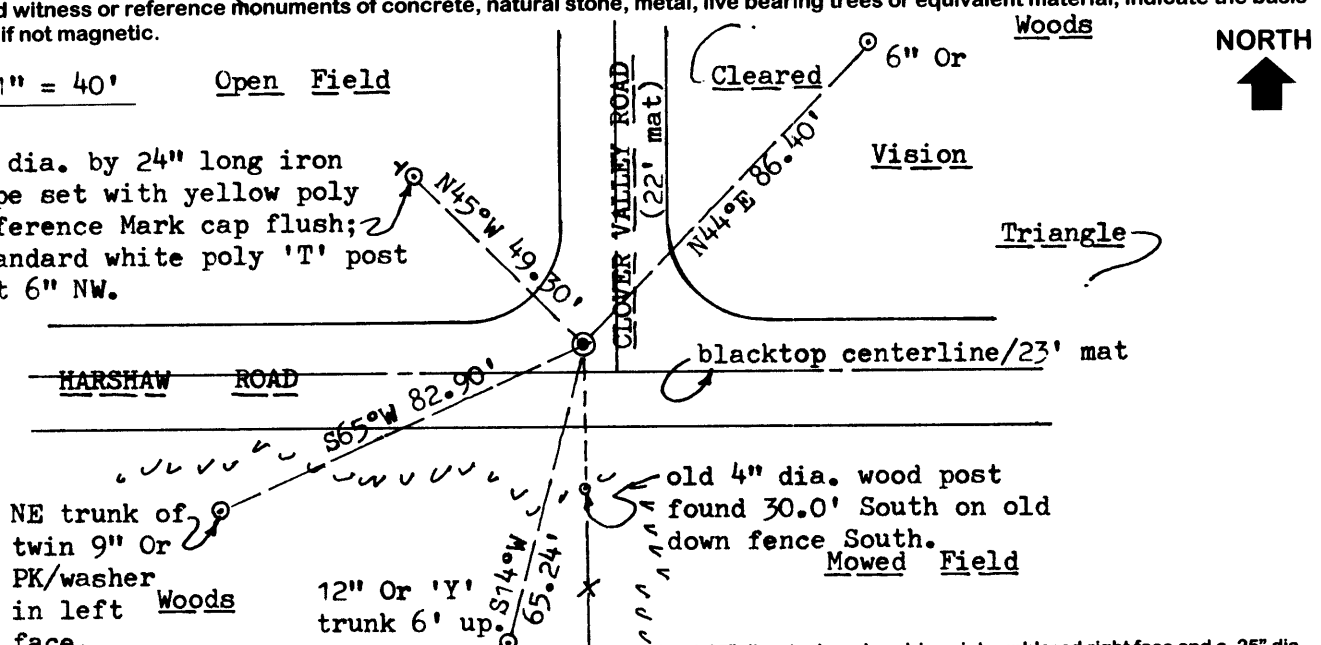
An undated plat of survey by St. Regis Paper Company filed as A-431 in Oneida County survey records indicates a monument symbol at this corner and noted as "set by others" in map legend; a bearing and distance is also noted to this corner location from the NE1/16SESW of Section 29. Further verification required by subsequent sectional division.

This recovery completed October 28, 1998 at the request of Oneida County Surveyor Mike Romportl; there were no witnesses other than vehicular drive-bys.

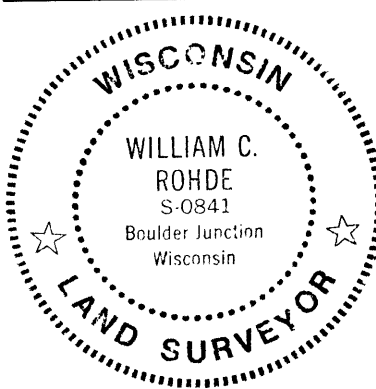
Plan view map of landmark monument location to scale with magnetic compass bearing and horizontal distance ties to a minimum of three (3) described witness or reference monuments of concrete, natural stone, metal, live bearing trees or equivalent material; indicate the basis for bearings if not magnetic.

SCALE: 1" = 40'

1" dia. by 24" long iron pipe set with yellow poly Reference Mark cap flush; 2 standard white poly 'T' post set 6" NW.

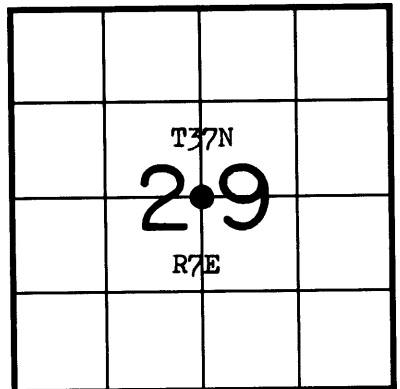


Unless otherwise indicated, all bearing tree ties are to a .25" dia. by 2.5" long PK nail with a 1.25" dia. steel washer driven into unblazed right face and a .25" dia. by 2.5" long PK nail with a 2" dia. steel washer stamped 'BT' is also driven into unblazed face of bearing tree at DBH; the basis for measured bearings is magnetic to nearest degree and all tie distances are horizontal measure to nearest 1/100th feet.



PROFESSIONAL LAND SURVEYOR CERTIFICATE:

I, William C. Rohde, hereby certify that I am a duly licensed Professional Land Surveyor in the State of Wisconsin, that the location of this Landmark Monument was determined by me, or under my direct supervision and control, for preservation purposes only and without any attestation of correctness, so that verification may be made by a subsequent land survey of public record; that this Landmark Monument Preservation Record is true and correct to the best of my knowledge and belief.



SECTION LOCATION MAP

RLS SEAL

SHEET NO. 1 OF 1

Signature

Date: 12-8-98

INDEX NO.