

MAP #	L1602
DATE FILED	JAN 15 1999
BY	DAP
DESCRIPTION FILED	
ONEIDA CO. SURVEYOR'S OFFICE	
Recorders Data	

# LANDMARK MONUMENT PRESERVATION RECORD

LOCATION: CE1/16th corner.

FORTY/GOVT LOT: N/A SECTION: 21 TOWNSHIP 37 NORTH RANGE 7 EAST WEST

(CITY/TOWNSHIP)(TOWN) OF: Cassian COUNTY OF: Oneida

Description of Landmark Monument and location history, if known:

Old 1 1/4" O.D. galvanized iron pipe monument found with uncapped top 6" above grade at this corner location per a 1966 Plat of Survey by Jean F. Resvick, filed as B-3310 in Oneida County Survey Records.

No other evidence observed nor detected within corner location area at 15' radius +/-.

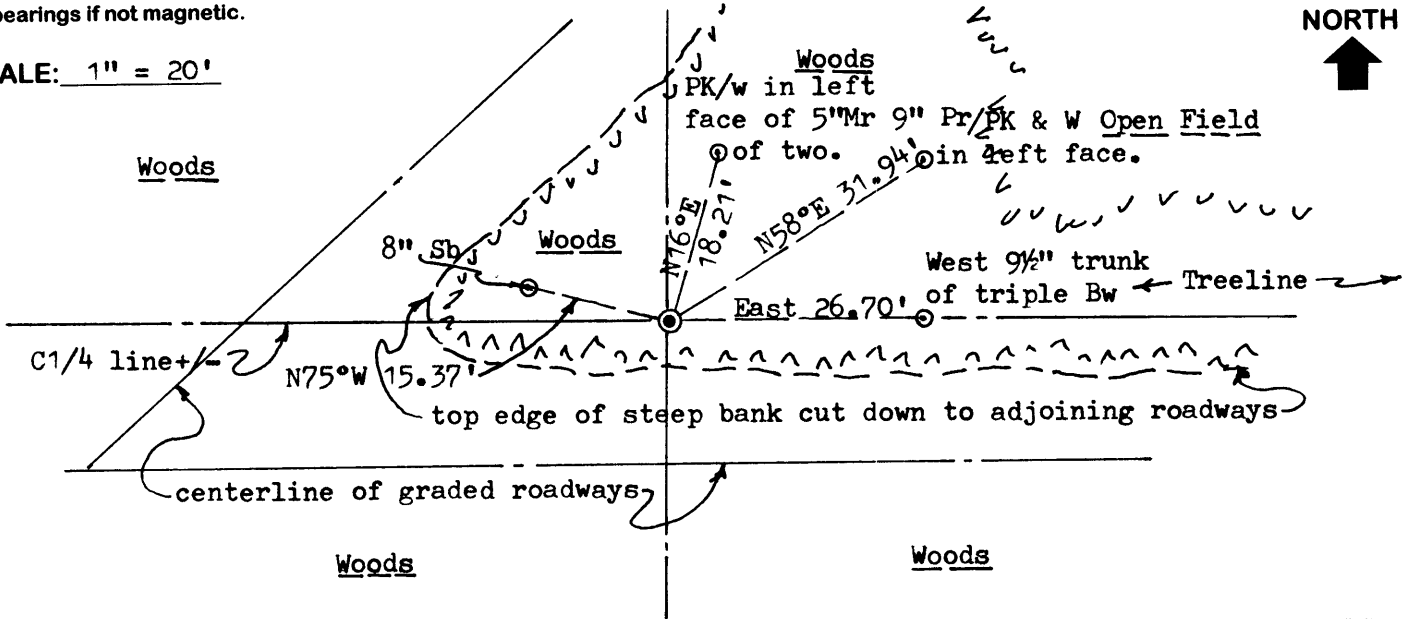
This recovery completed with the approval of Oneida County Surveyor Mike Romportl, for purposes of determining the monumented location of the C1/4 corner of Section 21, where I found two(2) iron pipe monuments that I have also referenced by a Landmark Preservation record. An EDM traverse by Topcon total station shown upon the reverse of this record, from this corner monument West to the latter C1/4 area iron pipe monuments resulted in no determination of either being the "Iron pipe in center of intersection set by others", as noted by Resvick on B-3310 Plat of Survey as being S89°55'W 1359.19' from this CE1/16 corner monument. Further verification recommended by subsequent sectional retracement.

This recovery completed October 28, 1998; there were no witnesses.

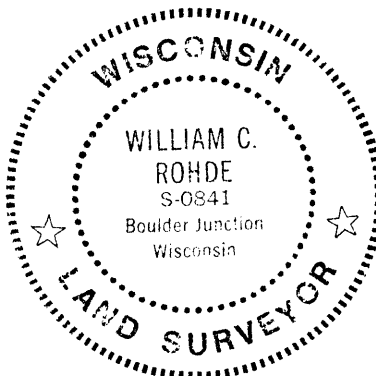
(SEE REVERSE FOR CONTROL TRAVERSE DATA)

Plan view map of landmark monument location to scale with magnetic compass bearing and horizontal distance ties to a minimum of three (3) described witness or reference monuments of concrete, natural stone, metal, live bearing trees or equivalent material; indicate the basis for bearings if not magnetic.

SCALE: 1" = 20'

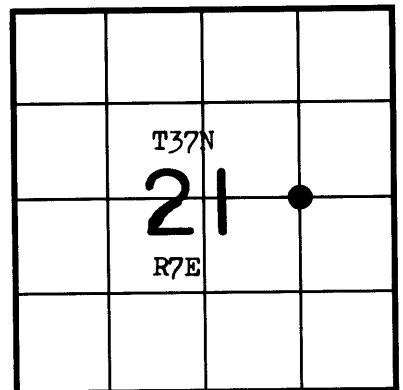


Unless otherwise indicated, all bearing tree ties are to a .25" dia. by 2.5" long PK nail with a 1.25" dia. steel washer driven into unblazed right face and a .25" dia. by 2.5" long PK nail with a 2" dia. steel washer stamped 'BT' is also driven into unblazed face of bearing tree at DBH; the basis for measured bearings is magnetic to nearest degree and all tie distances are horizontal measure to nearest 1/100th feet.



### PROFESSIONAL LAND SURVEYOR CERTIFICATE:

I, William C. Rohde, hereby certify that I am a duly licensed Professional Land Surveyor in the State of Wisconsin, that the location of this Landmark Monument was determined by me, or under my direct supervision and control, for preservation purposes only and without any attestation of correctness, so that verification may be made by a subsequent land survey of public record; that this Landmark Monument Preservation Record is true and correct to the best of my knowledge and belief.



SECTION LOCATION MAP

INDEX NO. \_\_\_\_\_

RLS SEAL

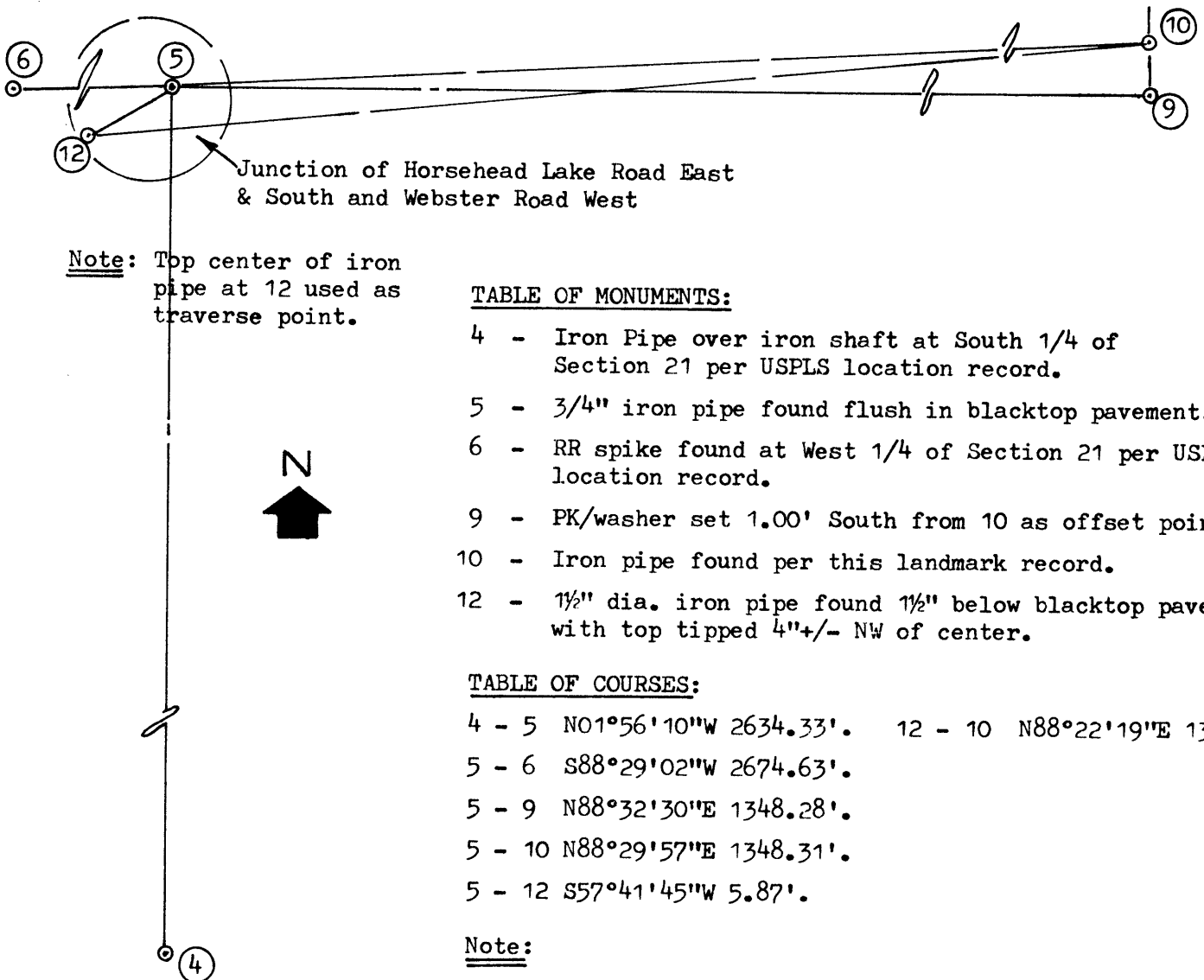
SHEET NO. 1 OF 1

Page 1 of 2

William C. Rohde Date: 12-8-98  
Signature

Stock No. 26273

EDM TOPCON TOTAL STATION CONTROL TRAVERSE  
Not To Scale



Distance per Resvick on Plat of Survey B-3310, from CE1/16 pipe he set at 10, noted as 1359.19 feet to iron pipe he found at C1/4 corner, does not fit either iron pipe found at 5 and 12 by several feet as noted by comparison above; the iron pipe at 5 however falls only 0.23 feet of a right line from the West 1/4 at 6 and the CE1/16 corner at 10.

A retracement survey of the intersecting center quarter lines of Section 21 is considered necessary in order to verify the resulting location for the C1/4.

— SOUTH