

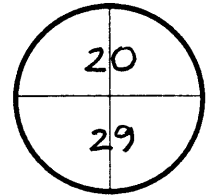
U.S. PUBLIC LAND SURVEY MONUMENT RECORD

Wisconsin Department of Transportation

DT1291 96 (Replaces ED716)

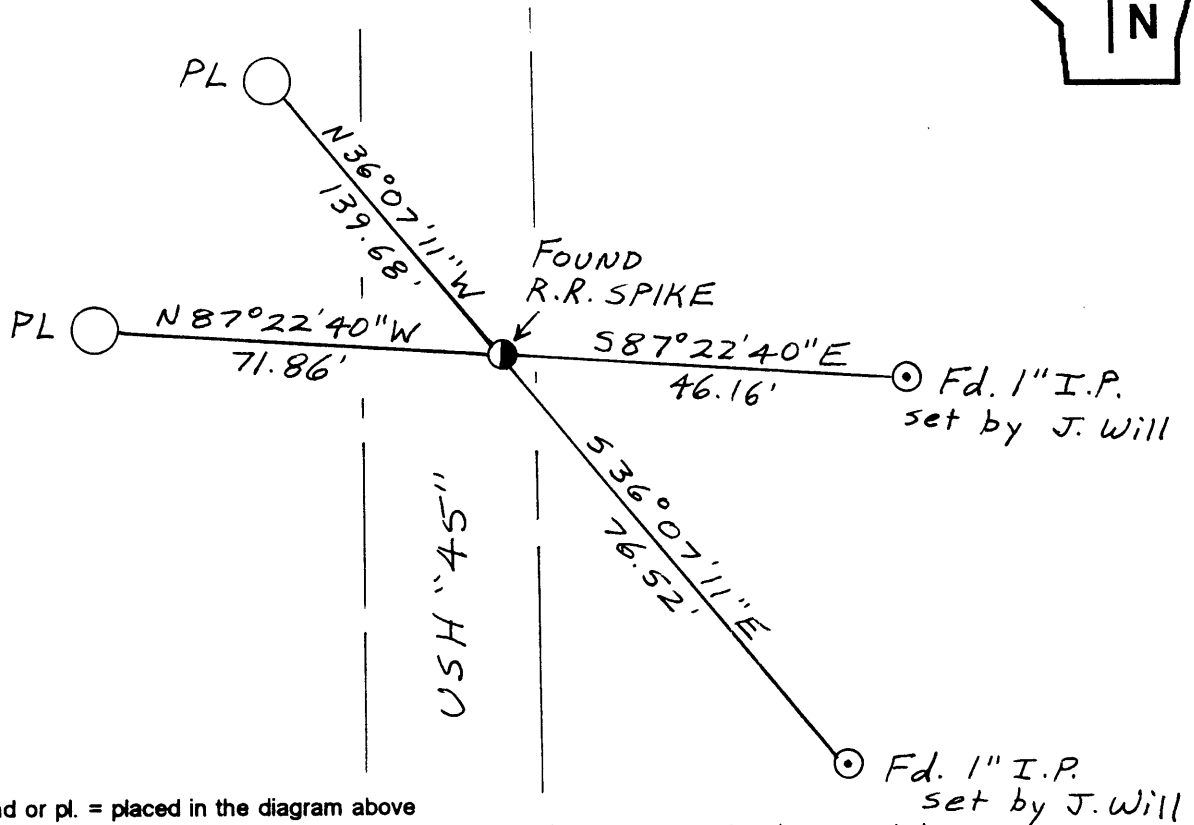
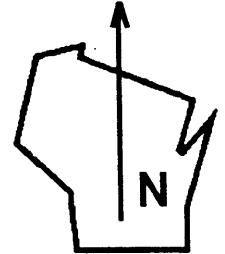
T. 38 N.-R. 11 E.
4th Principal Meridian
Corner 5 1/4 SEC. 20

County Name ONEIDA		Name of Township/City/Village (Circle One) THREE LAKES	
Surveyor Name BRADFORD C. KIMBALL			
Address, City, State, Zip Code P.O. BOX 777, Rhineland, WI. 54501			
X (Easting)	Y (Northing)	Latitude	Longitude
Project ID		Coordinate ID	



HORIZONTAL DATUM	UNITS	COORDINATE SYSTEM
<input type="checkbox"/> NAD 27	<input checked="" type="checkbox"/> English	<input type="checkbox"/> Geodetic
<input type="checkbox"/> NAD 83 (91)	<input type="checkbox"/> Metric	<input type="checkbox"/> State Plane _____ Zone
		<input type="checkbox"/> County _____

Location Diagram, showing corner identification name, bearing and distance references to at least four witness monuments, fence or occupational lines, centerlines of roads, and other site details for reference. Also, show the bearings and distances between the witness monuments.



Indicate fd. = found or pl. = placed in the diagram above
Bearings used in the location sketch and basis for monument location are assumed, unless as noted.
Monumentation Legend / Description of Corner and Witness Monuments:

- FOUND R.R. SPIKE
- ⊙ FOUND 1" IRON PIPE SET BY JAMES L. WILL (4-20-90)
- SET WISDOT DRIVEABLE MAGNETIC ALUMINUM MONUMENT

If applicable, show any discrepancy between the location of the corner as restored or re-established and the location of that corner as previously restored or re-established by bearing and distance. Also, show the bearings and distances between the previous corner and at least two of the witness monuments.
See reverse.

Basis for Monument Location

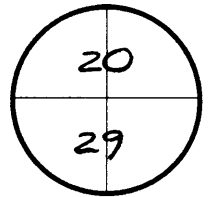
1. Describe any record evidence, monument evidence, occupational evidence or any other material evidence including traverse measurements that you considered, and whether the monument was found or placed. Explain below, be specific, and attach a separate sheet if necessary.
2. Was the corner:
 - a) found perpetuated,
 - b) restored through acceptance of obliterated evidence,
 - c) relocated by witness testimony, or
 - d) accepted as a remonumented corner of record and maintained with additional monumentation?
3. Was the corner re-established through lost corner proportionate methods? If so, show the method, including the directions and distances to other public land survey corners used as evidence or used in determining the corner location.

Please Type or Print

PERPETUATED EXISTING CORNER LOCATION.
 FOUND A R.R. SPIKE AND 1" I.P. REFERENCES
 (2 WITNESS MONUMENTS) AS CALLED FOR ON
 CERT. SHEET BY JAMES L. WILL DATED 4-2-90.
 SET TWO WISDOT ALUM. MONUMENTS TO
 PERPETUATE CORNER LOCATION.

MAP #	L1603
DATE FILED	JAN 16 1999
BY	DAP
DESCRIPTION FILED	
ONEIDA CO. SURVEYOR'S OFFICE	

T. 38 N.-- R. 11 E.
 4th Principal Meridian
 Corner 5/4 SEC. 20



Certification

I, Bradford C. Kimball
 (type or print name) certify that the corner location shown on this record was determined by me or under my direction and control and that this U.S. Public Land Survey Monument Record is correct and complete to the best of my knowledge and belief, in accordance with Chapter A-E 7.08 of the Wisconsin Administrative Code.

Section Control Data Sheets have been filed in the County Surveyor's office, showing final measurements by direction and distance between all remonumented corners. Section Control Information is referenced by the following:

Date	Project ID	Sheet(s)
	1600-04-70	

x Bradford C. Kimball 5-2190 11-27-98
 (Registered Land Surveyor Signature and Number) (Date)

