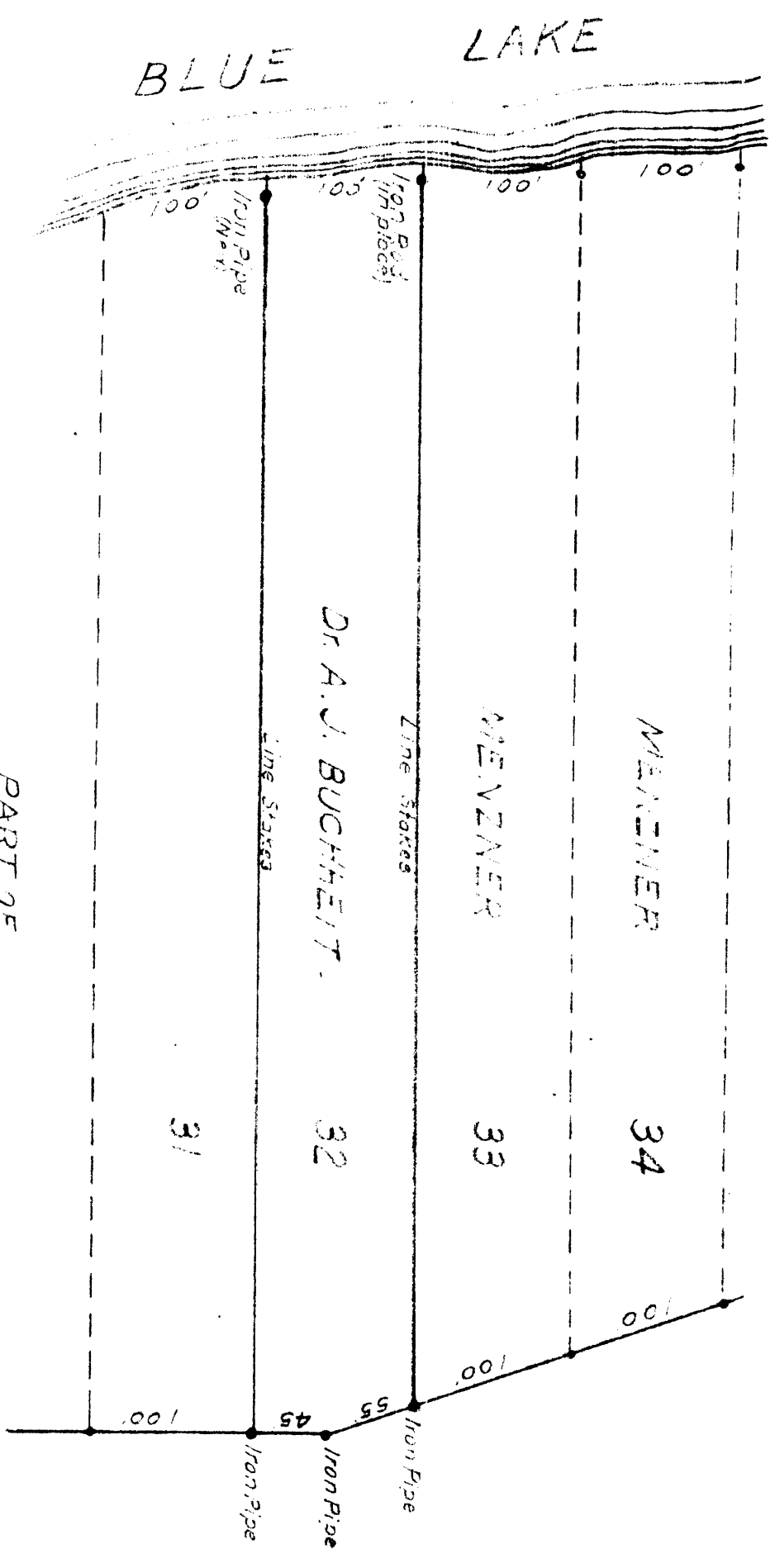


MAP # L1605  
 DATE FILED FEB 26 1939  
 BY D.M.  
 DESCRIPTION FILED  
 ONEIDA CO. SURVEYOR'S OFFICE



PART OF  
 NEVILLE & MORAN PLAT  
 (UNRECORDED)  
 IN  
 GOVT LOT 2, SEC 29, T39N, R6E  
 ONEIDA COUNTY WIS.  
 August 19, 1954 E. F. Hornaday Surveyor