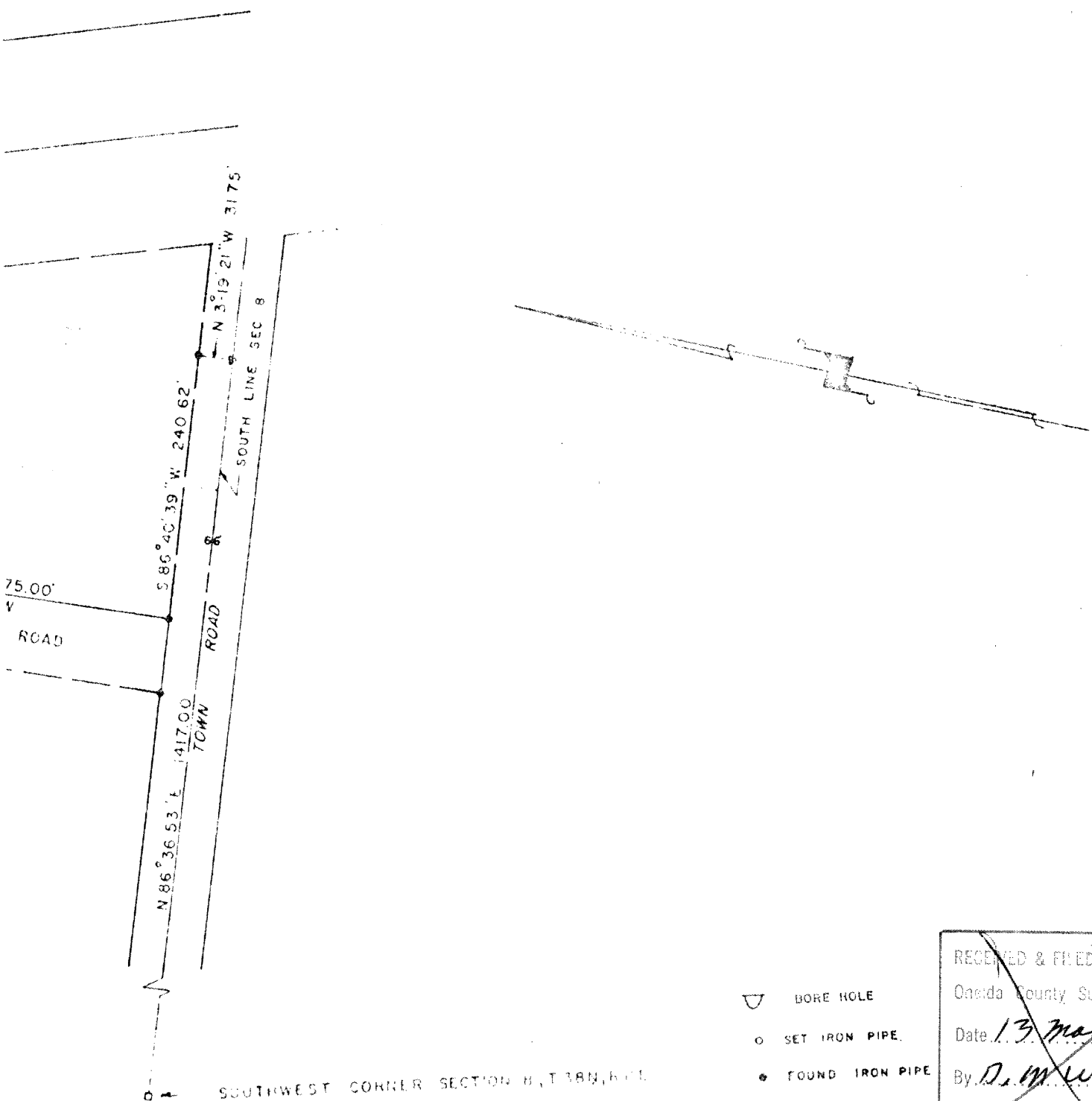


8N, R1E

PRELIMINARY C.S.M.

RECEIVED & FILED # **L165**
 Oneida County Surveyor's Office
 Date: **FEB 11 1988**
 By: *MJH*
 OCS Area #.....



RECEIVED & FILED # **L2308**
 Oneida County Surveyor's Office
 Date: *13 March '80*
 By: *D. M. Wisat*
 OCS Area # *1344-8-38011*

Rev 2091-25

ANDREW P. OLKOWSKI
 1207 BERLIN ST.
 WAUPACA, WIS. 54981

SCALE 1" = 160' - 1978 OWN BY M. J. H.
 DWG. NO. 6844
 GENISOT AND ASSOCIATES, INC.
 MILWAUKEE, WIS.

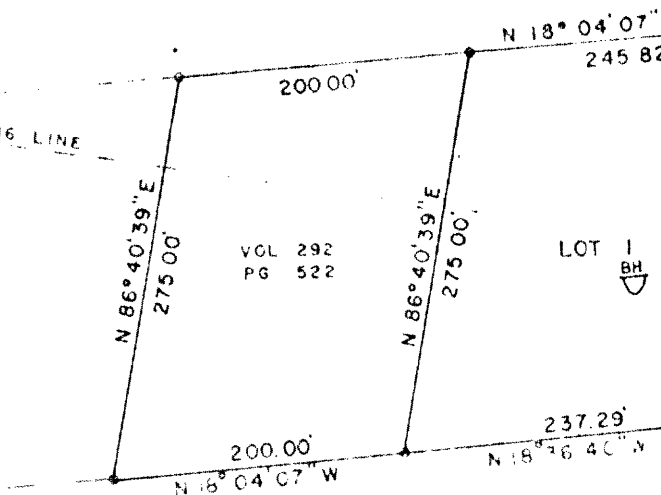
1199 T7

THE SW-SW & SE-SW, S

SE-SW

U.S.

APPROXIMATE 1/16 LINE



SW-SW

[Handwritten signature]

I hereby certify that
exceeding 15%.

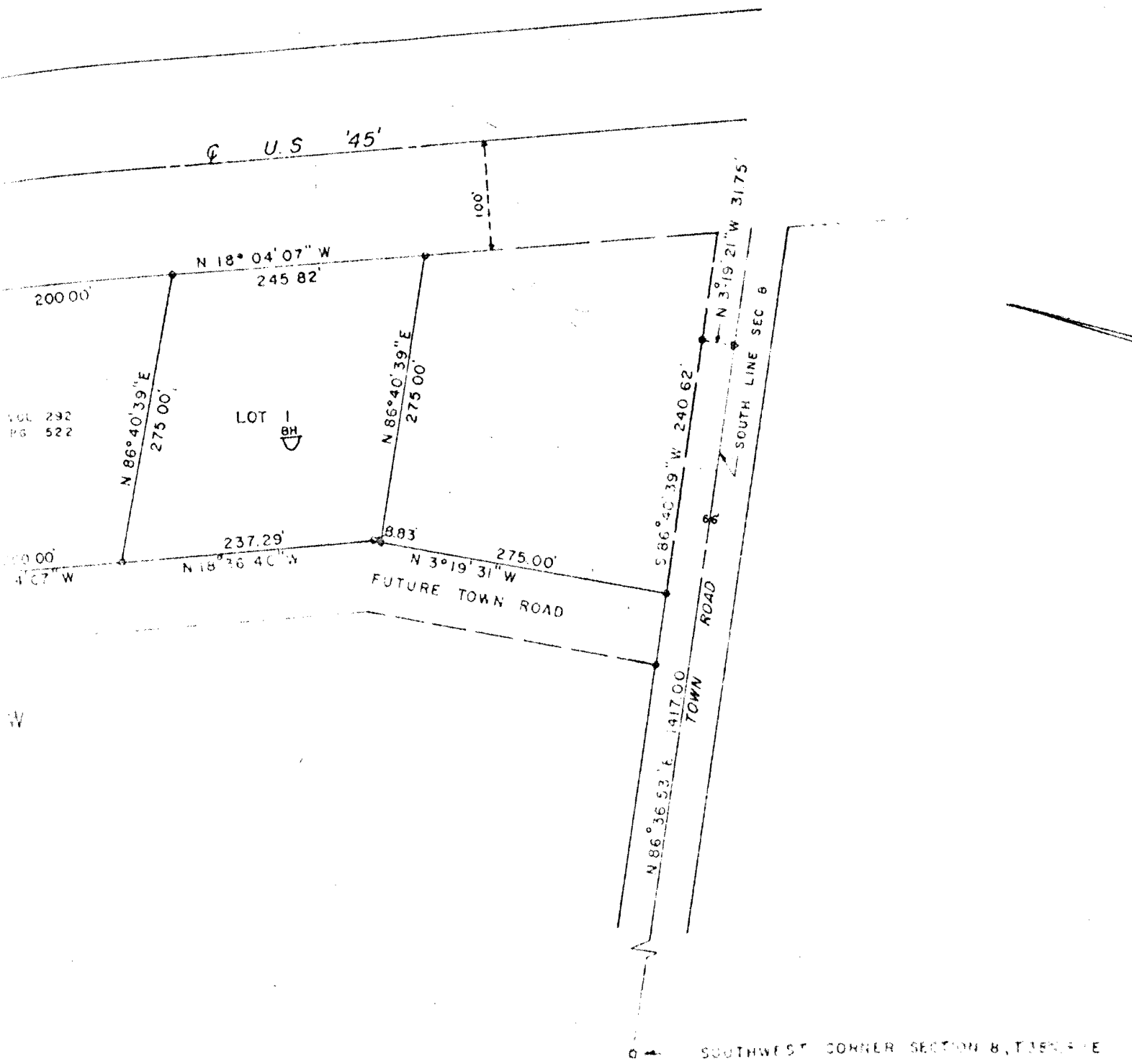
1111

PART OF

SW-SW & SE-SW, SECTION 8, T38N, R11E

PRELIMINARY C.S.M.

SW



I hereby certify that there are no slopes exceeding 15%.

Surveyor's Name

L165