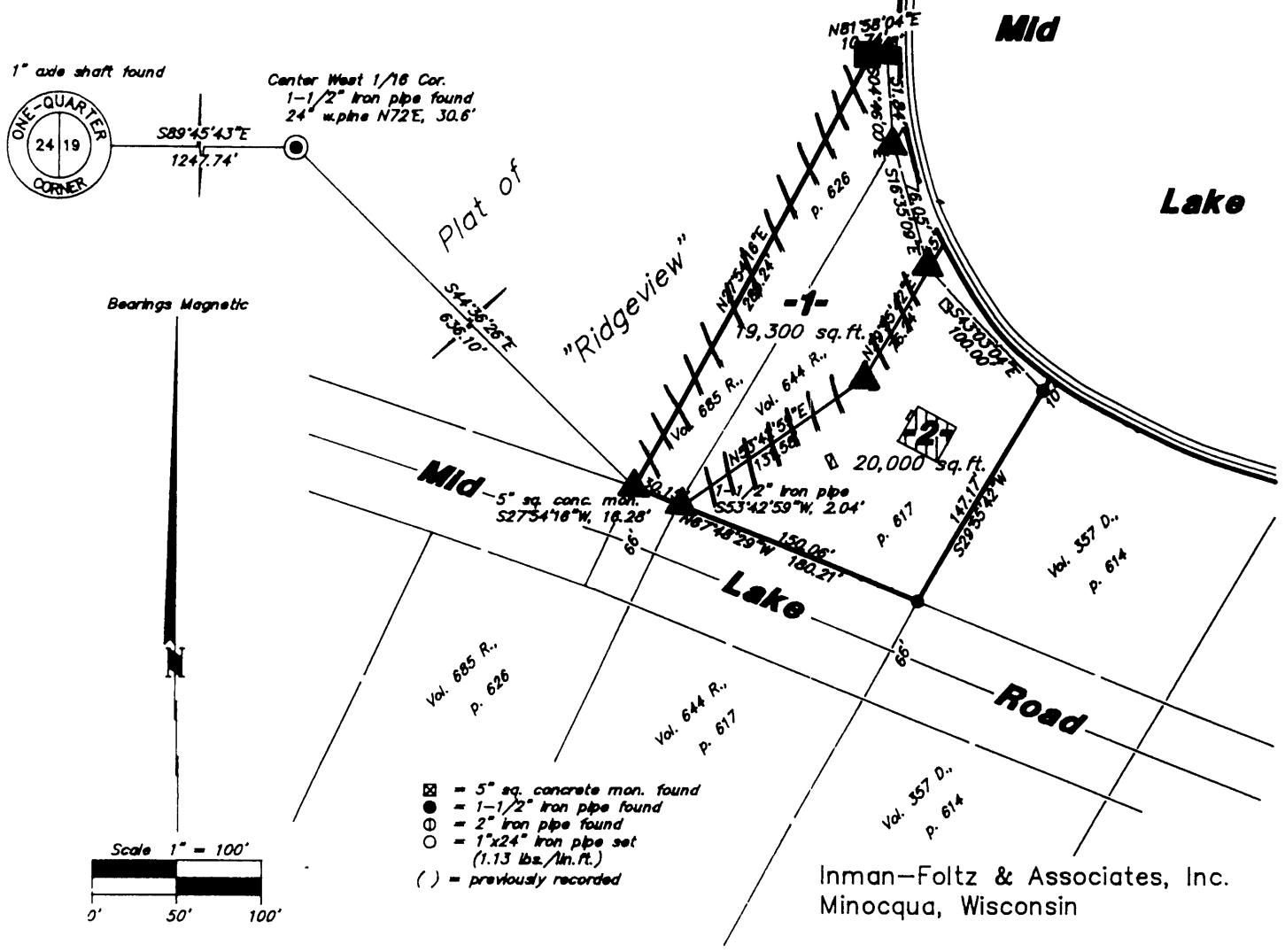


MAP # **L1698**
 DATE FILED **FEB 09 2000**
 BY *J.P.*
 DESCRIPTION FILED
 ONEIDA CO. SURVEYOR'S OFFICE

L1698

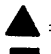


Part of
GOV'T. LOT 4
SECTION 19, T39N, R7E
 Town of Woodruff
 Oneida County, Wisconsin



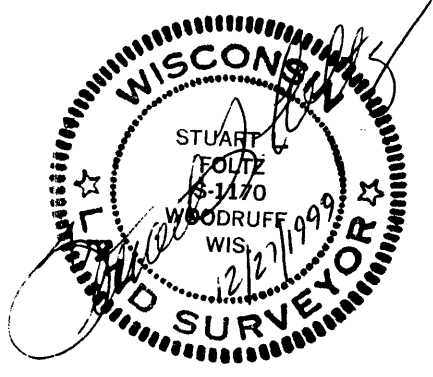
Inman-Foltz & Associates, Inc.
 Minocqua, Wisconsin

December 23, 1999

Recovered, verified, and marked monuments at the corners of Lot 1 and marked the approximate side lot lines, as follows:

-  = Iron monument found in place.
-  = Concrete monument found in place.
-  = Lot lines marked approximately with fluorescent surveyor's flagging ribbon.

This survey was completed by Foltz and Associates, Inc. for the purpose of locating existing lot corners and flagging approximate lot lines by the order of John Zizzo, who has executed a written waiver for all other requirements of Wis. Adm. Code Chap. A-E 7. A closed traverse was not made and the minimum accuracy is 1 part in 100 and plus or minus 2° .



L1698

L1698