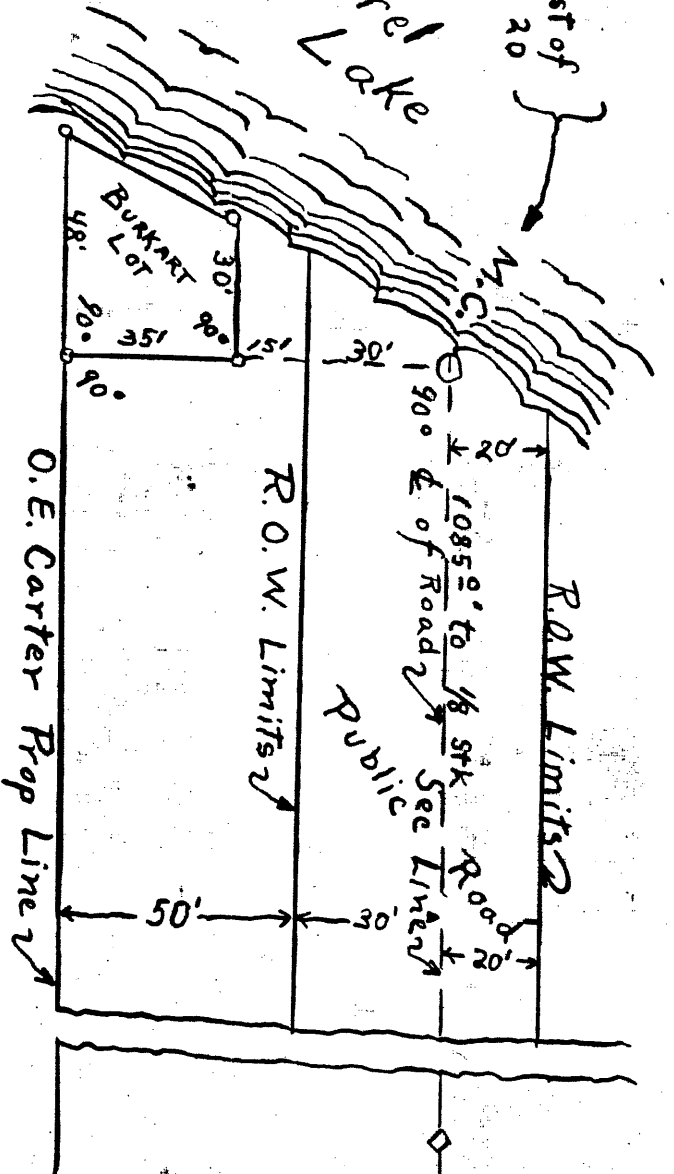


M.C. No 36
2427 1/2 fc west of
N.E. Cor. Sec 20

Squirrel Lake



Part of Govt Lot No 1
Sec 20 T 39N-R 5E
Oneida County, Wisconsin

MAP #	L 11734
DATE FILED	
DESCRIPTION FILED	
BY	J.P.P.
ONEIDA CO. SURVEYOR'S OFFICE	

Scale 1" = 40'

C.W. FISHER sur
Eagle River Wis

Vol 130 P 129