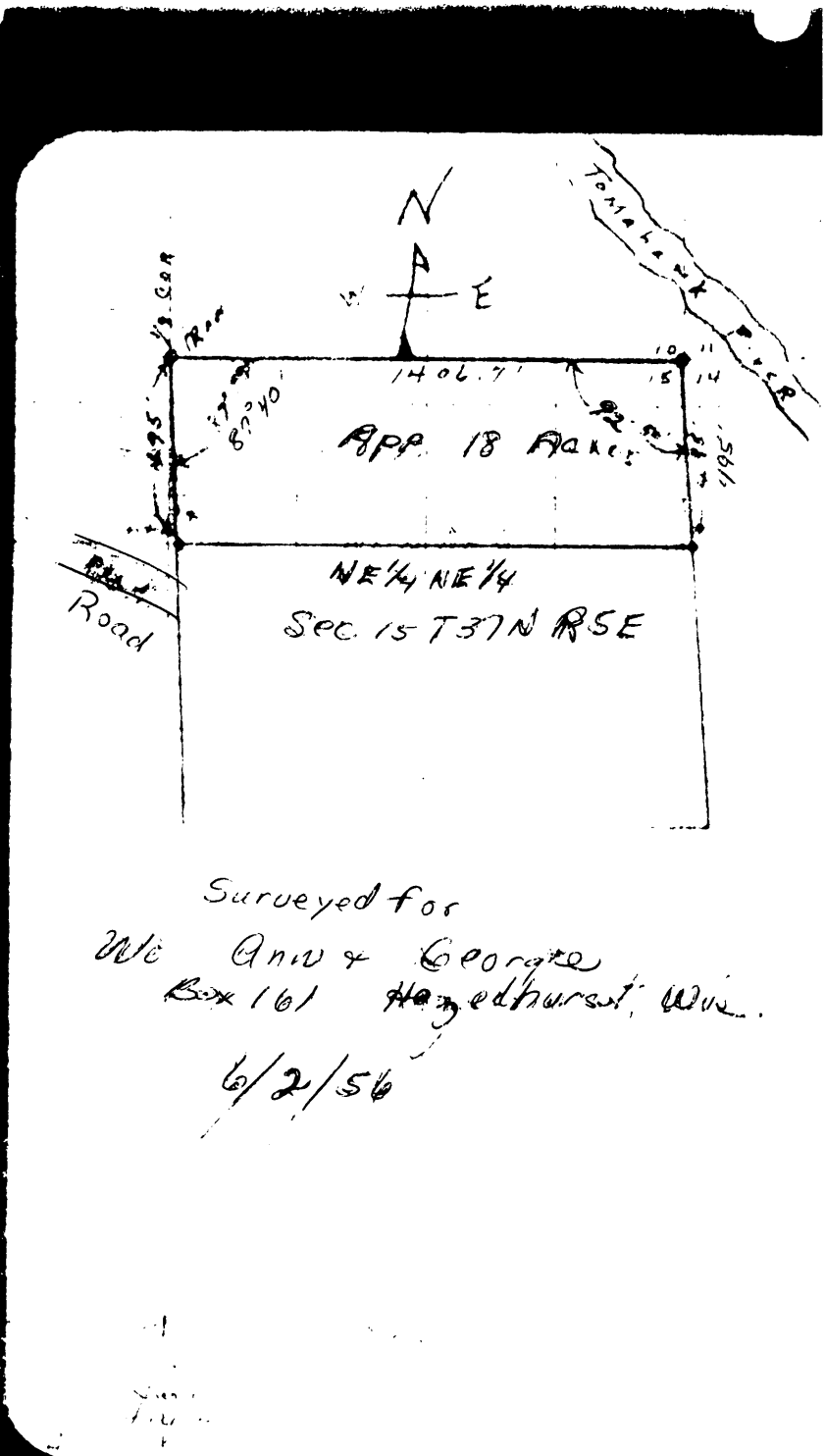


MAP # **L1753**  
 DATE FILED..... **OCT 17 2000**  
 BY.....  
 DESCRIPTION FILED.....  
 ONEIDA CO. SURVEYOR'S OFFICE

**NE 1/4 NE 1/4**  
**SEC. 15 T37N R5E**

L1753



Surveyed for  
 Wm QNW & George  
 Box 161 Hazledhurst, Wis.  
 6/2/56

L1753