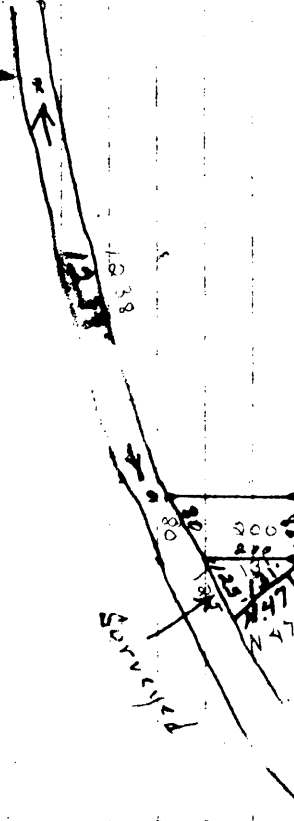
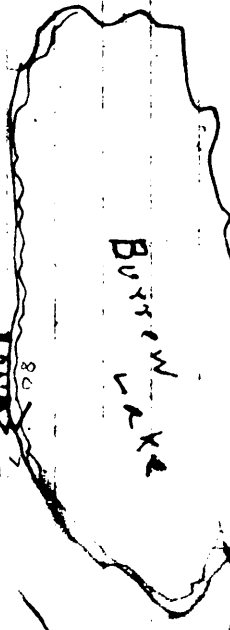


L1757

SEC 3 T36N R5E  
G?

MAP #	1,1757
DATE FILED	OCT 17 2003
BY	J.P.
DESCRIPTION	LAND
ONEIDA CO. SURVEYOR'S OFFICE	

North  
L1757  
PL



T36N R5E  
Oneida county

Survey for Mile Burrow  
R1, Oneida, Wis.  
June 22, 1884



916'