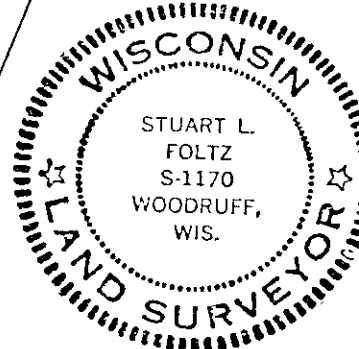
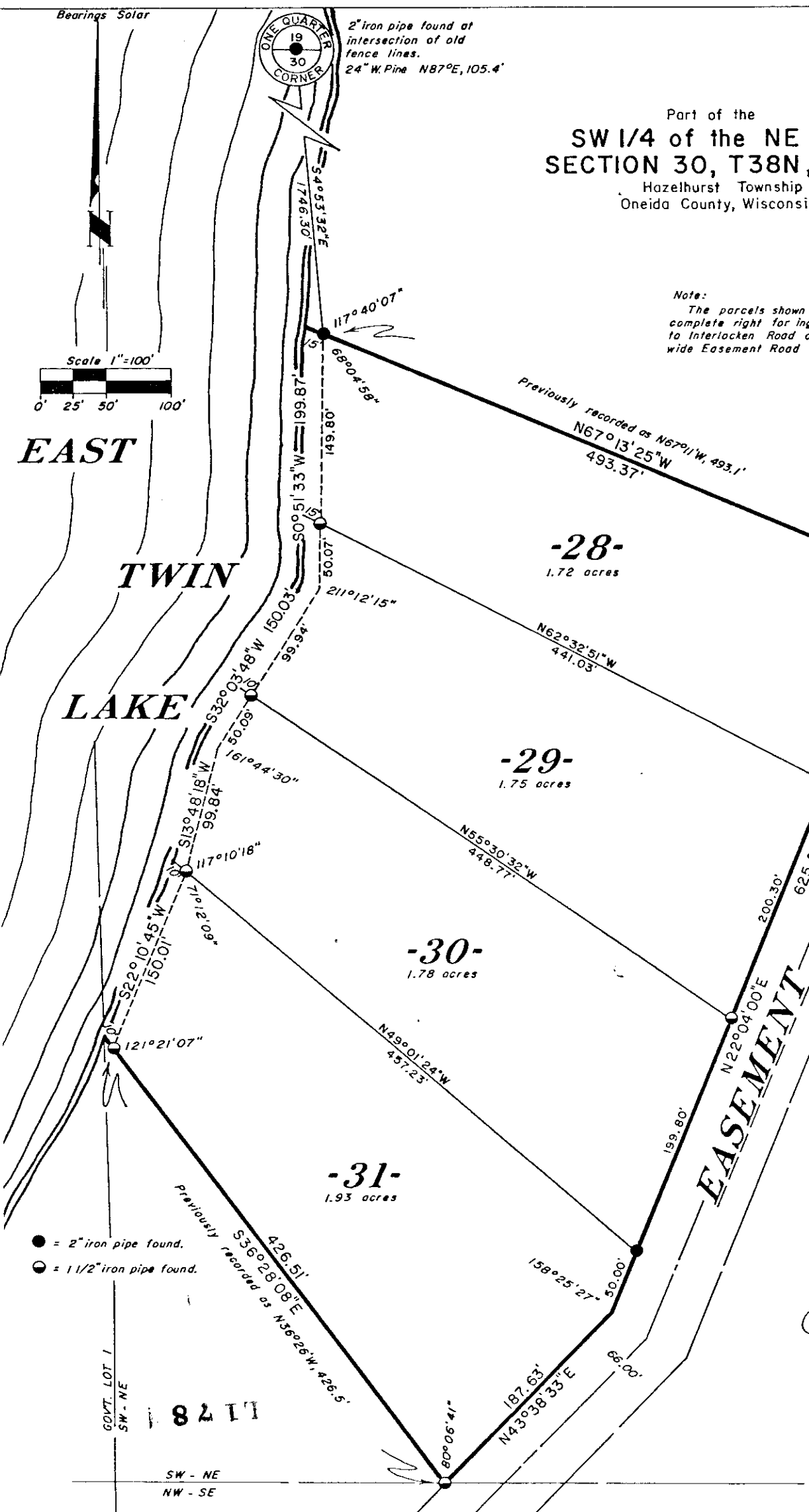


RECEIVED & FILED # **L178**  
 Oneida County Surveyor's Office  
 Date **FEB. 14 1988**  
 By *M J H*  
 OCS Area # *disc on file*

RECEIVED & FILED # **1988-14**  
 Oneida County Surveyor's Office  
 Date *2/14/88*  
 By *D. M. Woodruff*  
 OCS Area # *7-30-3806*

Part of the  
**SW 1/4 of the NE 1/4**  
**SECTION 30, T38N, R6E**  
 Hazelhurst Township  
 Oneida County, Wisconsin

Note:  
 The parcels shown hereon have  
 complete right for ingress and egress  
 to Interlocken Road over the 66 foot  
 wide Easement Road shown.



*Stuart L. Foltz*  
 Registered Land Surveyor S-1170  
 Dated *5/24/78*