

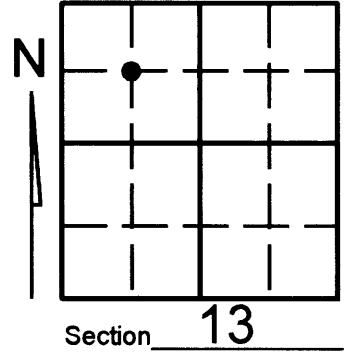
U.S. PUBLIC LAND SURVEY MONUMENT RECORD

L1784

Note: This form is intended and designed to fulfill all requirements of Wisconsin Administrative Code, Chapter A-E 7.08 U.S. Public Land Survey Monument Record (3)(a)(b)(c)(d)(e)(f)(g)(h)(i). An additional sheet may be added if necessary to conform with said requirements.

(a) Corner location: Township 36 North
 Range 05 (East/West)

Town/City/Village LITTLE RICE
 County ONEIDA



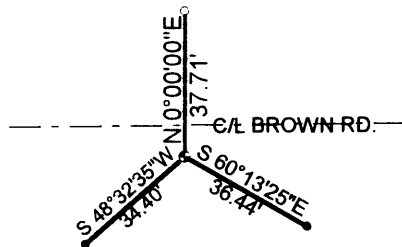
(b) (f) (g) (h) Description of monument found at this corner and if it was accepted, state all evidence (material, testimonial, occupational, plats, records, other monuments) used as a basis for accepting. If not accepted or if nothing was found, state evidence used as basis for establishing location. If reestablished through lost corner proportionate methods, indicate all monuments, distances and directions used to establish. Indicate type of monument found or set and sign post.

NOTE: This corner was referenced out in advance of road construction as an act of preserving survey evidence. This corner has not been tested for its accuracy during the course of this preservation and it is recommended that the corner be evaluated for its validity by those using it.

-Found 1" capped iron pipe as shown on county survey file B3025. Referenced out the monument before road construction and went back and checked references and referenced the monument as shown below.

(c) (d) (e) Plan view of corner with ties to at least 4 witness monuments. If in disagreement with previously established corner, show the distances between the two corners and also indicate the ties to the disputed corner.

MAP #	L1784
DATE FILED	FEB 23 2001
BY	[Signature]
DESCRIPTION	
ONEIDA CO. S...	...S OFFICE



LEGEND

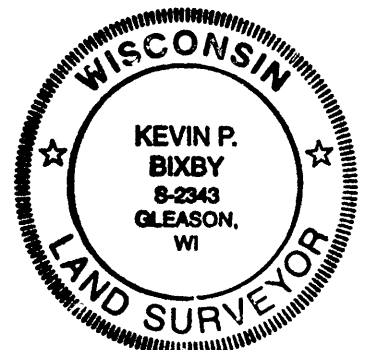
- SET 1" X 24" IRON PIPE
- ⦿ EXISTING 1" CAPPED IRON PIPE (NOT DISTURBED)
- EXISTING 1 1/4" IRON PIPE



(i) I, KEVIN P. BIXBY

(type or print name) certify that the corner location on this record was determined by me or under my direction and control and that this U.S. Public Land Survey Monument Record is correct and complete to the best of my knowledge and belief.

[Signature]
 Signature Date 02/13/01



36 05 13 30 30
 Stamp

Index No. _____

L1784