

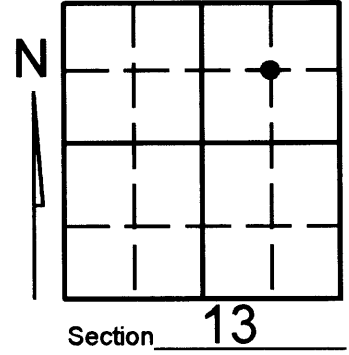
L1787

# U.S. PUBLIC LAND SURVEY MONUMENT RECORD

Note: This form is intended and designed to fulfill all requirements of Wisconsin Administrative Code, Chapter A-E 7.08 U.S. Public Land Survey Monument Record (3)(a)(b)(c)(d)(e)(f)(g)(h)(i). An additional sheet may be added if necessary to conform with said requirements.

(a) Corner location: Township 36 North  
Range 05 East West

Town/City/Village LITTLE RICE  
County ONEIDA



NE 1/4

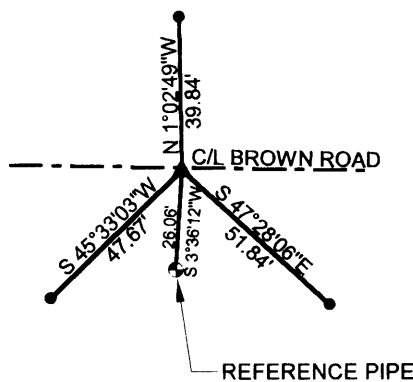
(b) (f) (g) (h) Description of monument found at this corner and if it was accepted, state all evidence (material, testimonial, occupational, plats, records, other monuments) used as a basis for accepting. If not accepted or if nothing was found, state evidence used as basis for establishing location. If reestablished through lost corner proportionate methods, indicate all monuments, distances and directions used to establish. Indicate type of monument found or set and sign post.

NOTE: This corner was referenced out in advance of road construction as an act of preserving survey evidence. This corner has not been tested for its accuracy during the course of this preservation and it is recommended that the corner be evaluated for its validity by those using it.

-Found 3/4" iron pipe as shown on county survey file number B3025. Referenced out the monument before road construction and went back and reset the monument as shown below.

(c) (d) (e) Plan view of corner with ties to at least 4 witness monuments. If in disagreement with previously established corner, show the distances between the two corners and also indicate the ties to the disputed corner.

MAP # **L1787**  
DATE FILED **FEB 28 2001**  
BY *[Signature]*  
DESCRIPTION  
ONEIDA CO. SURVEYOR OFFICE



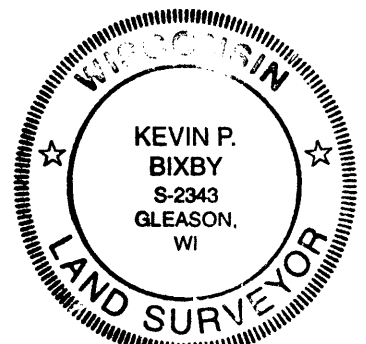
### LEGEND

- SET 1" X 24" IRON PIPE
- ▲ REPLACED IRON PIPE WITH P.K. NAIL
- ◐ EXISTING 1" CAPPED IRON PIPE



(i) I, KEVIN P. BIXBY

(type or print name) certify that the corner location on this record was determined by me or under my direction and control and that this U.S. Public Land Survey Monument Record is correct and complete to the best of my knowledge and belief.



3605133010  
Stamp

*[Signature]*  
Signature

02/13/01  
Date

Index No. \_\_\_\_\_

L1787

L1787