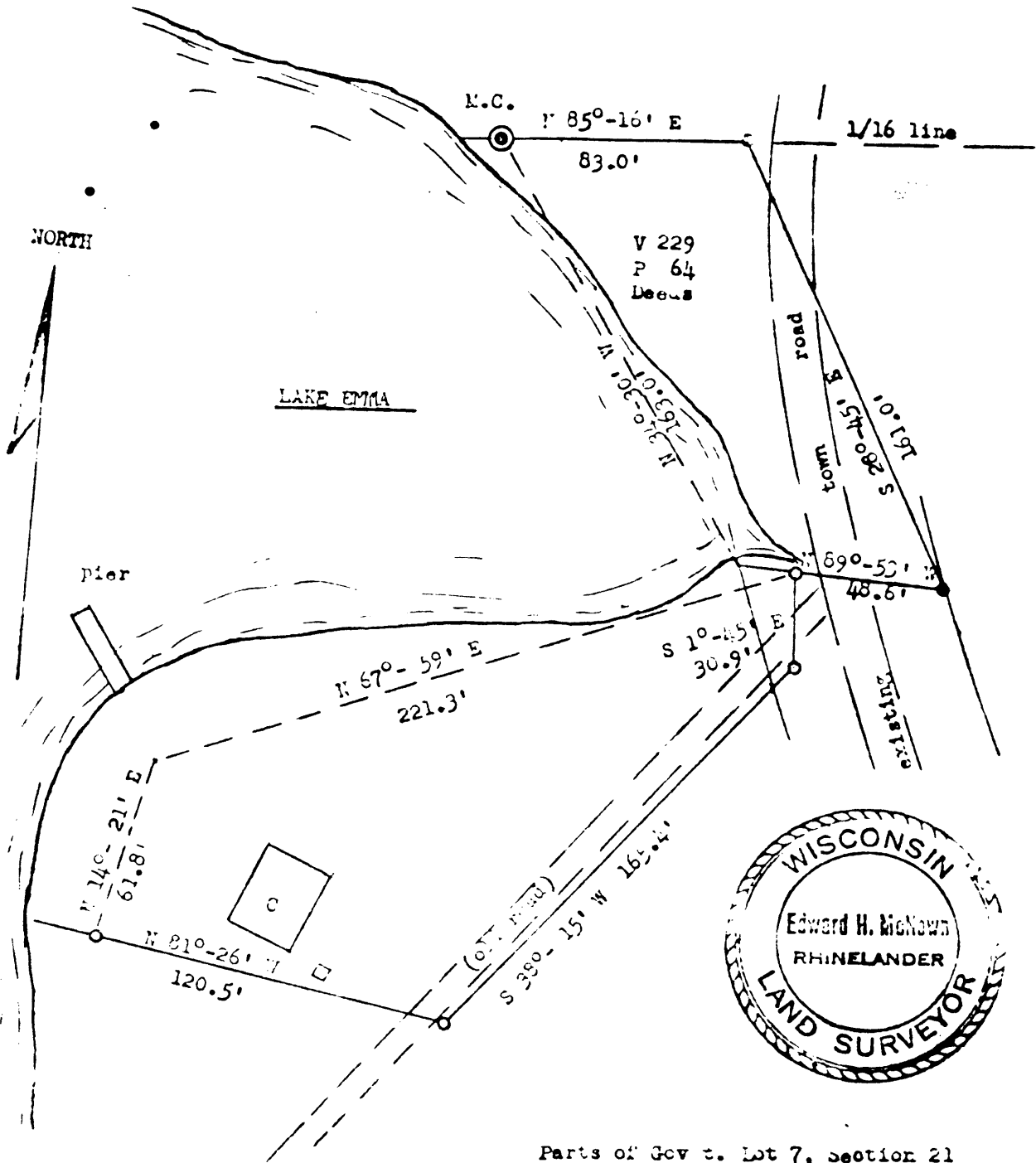


the water's edge of Lake Emma, all as more particularly represented on survey of Edward H. McNown hereto attached and made a part hereof. EXCEPT that part now used for highway purposes. (Existing town road.)



Parts of Gov. s. Lot 7, section 21  
T 36 N, R 5 E  
Oneida County, Wis.

For: F. J. Eastman  
(Merchants State Bank)

By: Edward H. McNown  
S - 760

*Edward H. McNown*

Oct. 29, 1966

● = iron pipe in place

○ = iron pipe set

Scale - 1" = 50'

243257

REGISTERS OFFICE }  
 Oneida County, Wis. }  
 Received for Record the 29<sup>th</sup> day of June A. D. 1966 at 8:30 o'clock P. M. and recorded in Vol. 334 of 1966 on page 666  
Agnes D. Verage Register

*Burton Smith*  
*Buy Marion Shore Store*  
*64*  
*Pa 400 Marion, Wis. 54950*

86211

86211