

From Vilas County
Survey office

L 1830

MAP #	L 1830
DATE FILED	DEC 28 2001
BY
DESCRIPTION FILED
ONEIDA CO. SURVEYOR'S OFFICE

25
Filed
MAR 17 1939
Mary Thomas, County Clerk
Eagle River, Wis.

T 39 N. - R. 11 E.

Gov't Lot 7, Section 6

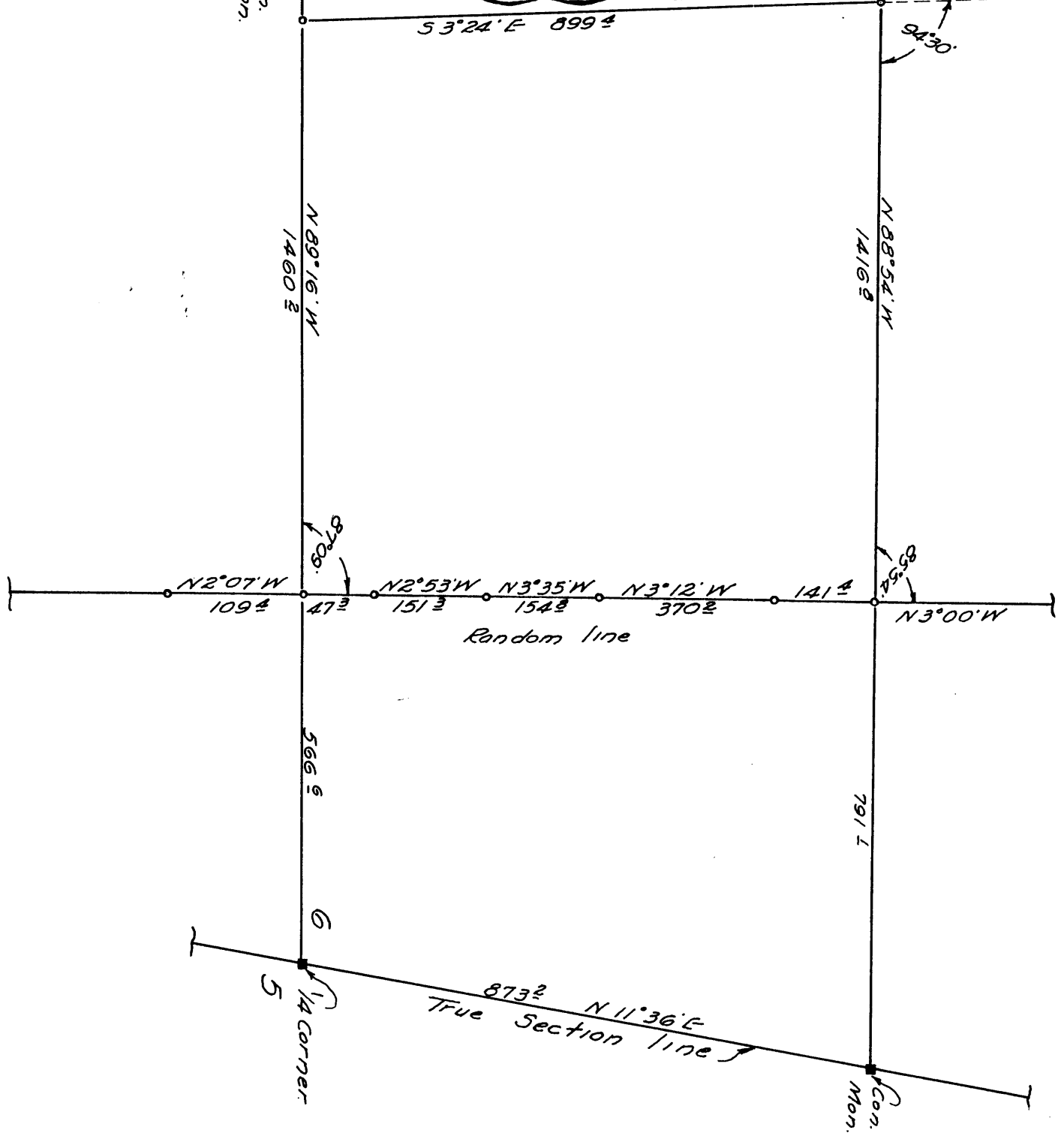
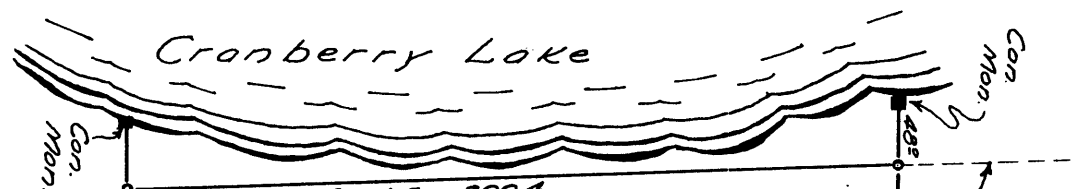
Description of Survey

Describing a parcel of land located in Government Lot 7 of Section 6, Township 39 North, Range 11 East in the County of Oneida, State of Wisconsin, and more particularly described as follows to-wit:

Starting at the $\frac{1}{4}$ corner common to Sections 5 and 6, Township 39 North, Range 11 East, which is the Point of Beginning, thence North 11° 36' East on the Section line of Sections 5 and 6 of aforesaid town and range a distance of 873 $\frac{3}{4}$ feet; thence North 88° 54' West a distance of 2259 feet to the Lake shore (and to the N.W. corner of this description) thence South 3° 24' East a distance of 899 $\frac{3}{4}$ feet to the $\frac{1}{4}$ line, (which is the distance on a straight line between the Northwest corner and the Southwest corner of this description) thence South 89° 16' East a distance of 2026 $\frac{3}{4}$ feet to the Point of Beginning.

I have made this survey conforming to the existing corners.

L 1830



L 1830

MAR 17 1952
Mary Thomas, Court
Eagle River, Wis.

Section 6

Description of Survey

L 1830

From the Meander Corner between Sections 6 and 7/Township 39 North, Range 11 East corner consisting of a wooden stake in place and a 12" Pine stump original bearing true) ran East on True Section Line between Sections 6 and 7/Town 39 North, Range 11 East) a distance of 1101 $\frac{1}{2}$ feet to the Section Corner common to Sections 5-6 and 8 of said town and range. (Section corner being in center of road, wooden stake squared and scribed, offset at side of road.) From the True Section Line turned 77°08' left and ran on a bearing and random line North 13°52' East a distance of 1350 $\frac{1}{2}$ feet; thence turned 89°20' left and on a bearing of North 76°28' West ran a distance of 300 $\frac{1}{2}$ feet; thence turned 78°43' right and on a bearing of North 2°15' East ran 287 $\frac{1}{2}$ feet; thence turned 28°36' left and on a bearing of North 26°21' West ran a distance of 215 $\frac{1}{2}$ feet; thence turned 23°53' right and on a bearing of North 2°28' West ran a distance of 330 $\frac{1}{2}$ feet; thence turned 0°21' right and on a bearing of North 2°07' West ran a distance of 156 $\frac{1}{2}$ feet; thence turned 0°46' left and on a bearing of North 2°53' West ran a distance of 151 $\frac{1}{2}$ feet; thence turned 0°42' left and on a bearing of North 3°35' West ran a distance of 154 $\frac{1}{2}$ feet; thence turned 0°23' right and on a bearing of North 3°12' West ran a distance of 370 $\frac{1}{2}$ feet; thence turned 0°12' right and on a bearing of North 3°00' West ran a distance of 880 $\frac{1}{2}$ feet; thence turned 0°17' right and on a bearing of North 2°43' West ran a distance of 157 $\frac{1}{2}$ feet; thence turned 0°16' left and on a bearing of North 2°59' West ran a distance of 405 $\frac{1}{2}$ feet; thence turned 88°12' left and on a bearing of South 88°49' West ran a distance of 428 $\frac{1}{2}$ feet to the Meander Corner between Sections 31 and 6/Town 39 North and Town 40 North Range 11 East) (Meander corner consists of concrete monument in place and marked.

From the Meander Corner ran North 88°49' East a distance of 1312 $\frac{1}{2}$ feet; thence turned 17°15' right and on a bearing of South 73°56' East ran a distance of 240 $\frac{1}{2}$ feet to the section corner common to Sections 5-6-31 and 32 of said town and range. Established the true line between Sections 31 and 6. Section line runs on a bearing of North 88°32' West. Established the true section line between Sections 5 and 6 (Town 39 North Range 11 East). Section line runs on a bearing of North 11°36' East. Proportioned for the $\frac{1}{4}$ corner between Sections 5 and 6 of said town and range and set the corner (a concrete monument in place) ran the $\frac{1}{4}$ line on a bearing of North 89°16' West (Mean bearing between the two section lines) from the $\frac{1}{4}$ corner common to Sections 5 and 6/Town 39 North Range 11 East) to the shore of Cranberry Lake a distance of 2036 $\frac{1}{2}$ feet.

L 1830

L 1830

